


## Product datasheet

# Anti-RFX1 antibody ab104406

1 Image

### Overview

<b>Product name</b>	Anti-RFX1 antibody
<b>Description</b>	Rabbit polyclonal to RFX1
<b>Host species</b>	Rabbit
<b>Tested applications</b>	<b>Suitable for:</b> WB
<b>Species reactivity</b>	<b>Reacts with:</b> Mouse <b>Predicted to work with:</b> Rat, Guinea pig, Dog 
<b>Immunogen</b>	Synthetic peptide corresponding to a region within internal sequence amino acids 181-230 (KSGQVSLTVH SAQQVHSAPE RSPVQANNST SKTAGTPAAT VQQLQVHSVQ) of Mouse RFX1 (NP_033081) <a href="#">Run BLAST with ExPASy</a> <a href="#">Run BLAST with NCBI</a>
<b>Positive control</b>	Mouse spleen lysate

### Properties

<b>Form</b>	Liquid
<b>Storage instructions</b>	Shipped at 4°C. Upon delivery aliquot and store at -20°C. Avoid repeated freeze / thaw cycles.
<b>Storage buffer</b>	Preservative: None Constituents: 2% Sucrose, PBS
<b>Purity</b>	Immunogen affinity purified
<b>Clonality</b>	Polyclonal
<b>Isotype</b>	IgG

### Applications

Our [Abpromise guarantee](#) covers the use of **ab104406** in the following tested applications.

The application notes include recommended starting dilutions; optimal dilutions/concentrations should be determined by the end user.

Application	Abreviews	Notes
WB		Use a concentration of 0.25 µg/ml. Predicted molecular weight: 104 kDa. Good results were obtained when blocked with 5% non-fat dry milk in 0.05% PBS-T.

## Target

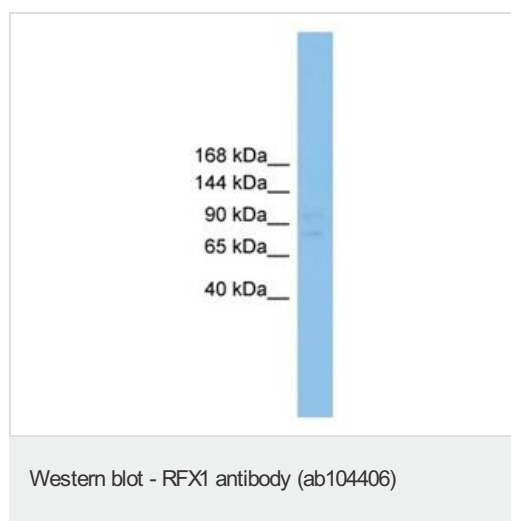
---

<b>Function</b>	Regulatory factor essential for MHC class II genes expression. Binds to the X boxes of MHC class II genes. Also binds to an inverted repeat (ENH1) required for hepatitis B virus genes expression and to the most upstream element (alpha) of the RPL30 promoter.
<b>Sequence similarities</b>	Belongs to the RFX family. Contains 1 RFX-type winged-helix DNA-binding domain.
<b>Cellular localization</b>	Nucleus.

---

## Images

---



Anti-RFX1 antibody (ab104406) at 0.25 µg/ml  
+ Mouse spleen lysate at 10 µg

**Predicted band size:** 104 kDa

Gel concentration: 6-18%.

**Please note:** All products are "FOR RESEARCH USE ONLY AND ARE NOT INTENDED FOR DIAGNOSTIC OR THERAPEUTIC USE"

## Our Abpromise to you: Quality guaranteed and expert technical support

---

- Replacement or refund for products not performing as stated on the datasheet
- Valid for 12 months from date of delivery
- Response to your inquiry within 24 hours
- We provide support in Chinese, English, French, German, Japanese and Spanish
- Extensive multi-media technical resources to help you
- We investigate all quality concerns to ensure our products perform to the highest standards

If the product does not perform as described on this datasheet, we will offer a refund or replacement. For full details of the Abpromise, please visit <http://www.abcam.com/abpromise> or contact our technical team.

## Terms and conditions

---

- Guarantee only valid for products bought direct from Abcam or one of our authorized distributors