


Product datasheet

Anti-Noelin antibody [S96-7] ab105667

1 References 2 Images

Overview

Product name	Anti-Noelin antibody [S96-7]
Description	Mouse monoclonal [S96-7] to Noelin
Host species	Mouse
Specificity	Detects ~70kDa (noelin, noelin 3) and ~20kDa (noelin 2 and noelin 4).
Tested applications	Suitable for: IHC-P, IHC-Fr, ICC
Species reactivity	Reacts with: Mouse, Rat, Human Predicted to work with: Chicken 
Immunogen	Synthetic peptide corresponding to amino acids 28-48 (SLVGLNTRLAASGGTLDRS) of human Noelin (Q99784).

 [Run BLAST with](#)

 [Run BLAST with](#)

Properties

Form	Liquid
Storage instructions	Shipped at 4°C. Store at -20°C.
Storage buffer	Preservative: 0.09% Sodium Azide Constituents: 50% Glycerol, PBS, pH 7.4
Purity	Protein G purified
Clonality	Monoclonal
Clone number	S96-7
Isotype	IgG1

Applications

Our [Abpromise guarantee](#) covers the use of **ab105667** in the following tested applications.

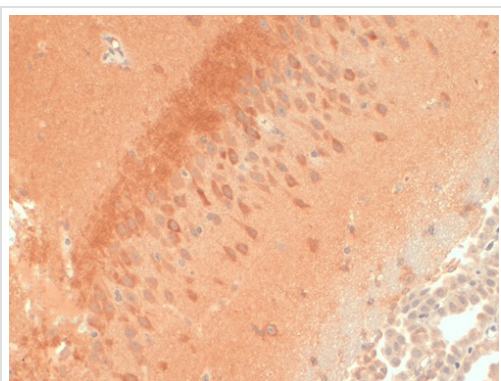
The application notes include recommended starting dilutions; optimal dilutions/concentrations should be determined by the end user.

Application	Abreviews	Notes
IHC-P		Use a concentration of 0.1 - 1 µg/ml.
IHC-Fr		Use a concentration of 0.1 - 1 µg/ml.
ICC		Use a concentration of 0.1 - 1 µg/ml.

Target

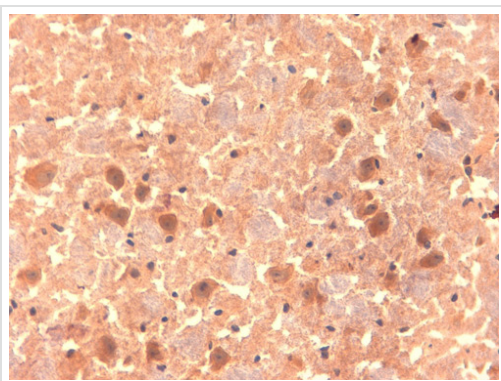
Function	Seems to play an important role in regulating the production of neural crest cells by the neural tube.
Sequence similarities	Contains 1 olfactomedin-like domain.
Cellular localization	Endoplasmic reticulum lumen.

Images



Immunohistochemical detection of Noelin in frozen sections of Mouse brain using ab105667.

Immunohistochemistry (Frozen sections) - Anti-Noelin antibody [S96-7] (ab105667)



Immunohistochemical detection of Noelin in frozen sections of Mouse brain using ab105667.

Immunohistochemistry (Frozen sections) - Anti-Noelin antibody [S96-7] (ab105667)

Our Abpromise to you: Quality guaranteed and expert technical support

- Replacement or refund for products not performing as stated on the datasheet
- Valid for 12 months from date of delivery
- Response to your inquiry within 24 hours

- We provide support in Chinese, English, French, German, Japanese and Spanish
- Extensive multi-media technical resources to help you
- We investigate all quality concerns to ensure our products perform to the highest standards

If the product does not perform as described on this datasheet, we will offer a refund or replacement. For full details of the Abpromise, please visit <http://www.abcam.com/abpromise> or contact our technical team.

Terms and conditions

- Guarantee only valid for products bought direct from Abcam or one of our authorized distributors