

Product datasheet

Anti-ATG16L1 antibody ab106354

3 Images

Overview

<b>Product name</b>	Anti-ATG16L1 antibody
<b>Description</b>	Rabbit polyclonal to ATG16L1
<b>Tested applications</b>	<b>Suitable for:</b> ICC/IF, WB, ICC
<b>Species reactivity</b>	<b>Reacts with:</b> Mouse, Rat, Human
<b>Immunogen</b>	Synthetic peptide corresponding to 18 amino acids from near the center of human ATG16L1 (NP_110430).
<b>Positive control</b>	HeLa cells

Properties

<b>Form</b>	Liquid
<b>Storage instructions</b>	Shipped at 4°C. Store at 4°C (stable for up to 12 months).
<b>Storage buffer</b>	Preservative: 0.02% Sodium Azide Constituents: 1X PBS
<b>Purity</b>	Immunogen affinity purified
<b>Clonality</b>	Polyclonal
<b>Isotype</b>	IgG

Applications

Our [Abpromise guarantee](#) covers the use of **ab106354** in the following tested applications.

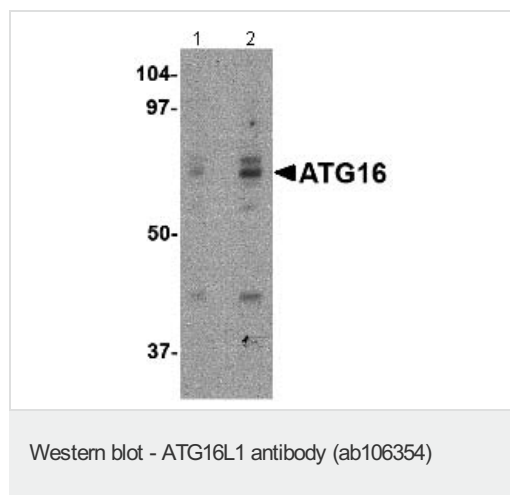
The application notes include recommended starting dilutions; optimal dilutions/concentrations should be determined by the end user.

Application	Abreviews	Notes
ICC/IF		Use a concentration of 20 µg/ml.
WB		Use a concentration of 0.25 - 0.5 µg/ml. Predicted molecular weight: 68 kDa.
ICC		Use a concentration of 2 µg/ml.

## Target

<b>Function</b>	Plays an essential role in autophagy: interacts with ATG12-ATG5 to mediate the conjugation of phosphatidylethanolamine (PE) to LC3 (MAP1LC3A, MAP1LC3B or MAP1LC3C), to produce a membrane-bound activated form of LC3 named LC3-II. Thereby, controls the elongation of the nascent autophagosomal membrane.
<b>Involvement in disease</b>	Inflammatory bowel disease 10
<b>Sequence similarities</b>	Belongs to the WD repeat ATG16 family. Contains 7 WD repeats.
<b>Post-translational modifications</b>	Proteolytic cleavage by activated CASP3 leads to degradation and may regulate autophagy upon cellular stress and apoptotic stimuli.
<b>Cellular localization</b>	Cytoplasm. Preautophagosomal structure membrane. Recruited to omegasomes membranes by WIPI2. Omegasomes are endoplasmic reticulum connected structures at the origin of preautophagosomal structures. Localized to preautophagosomal structure (PAS) where it is involved in the membrane targeting of ATG5. Localizes also to discrete punctae along the ciliary axoneme.
<b>Form</b>	There are 4 isoforms produced by alternative splicing.

## Images



**Lane 1** : Anti-ATG16L1 antibody (ab106354)  
at 0.25  $\mu\text{g/ml}$

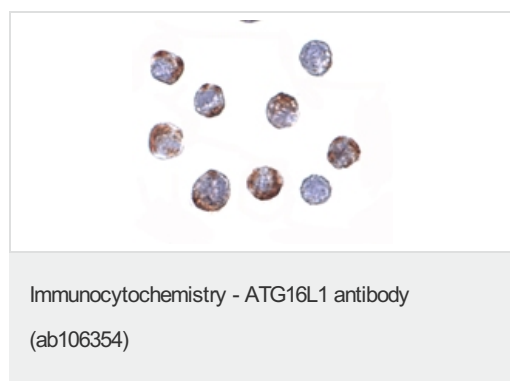
**Lane 2** : Anti-ATG16L1 antibody (ab106354)  
at 0.5  $\mu\text{g/ml}$

**Lane 1** : HeLa Cell lysate

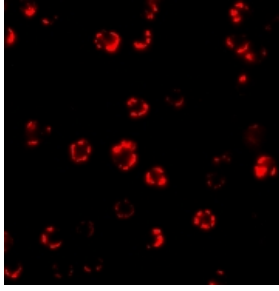
**Lane 2** : HeLa Cell lysate

Lysates/proteins at 15  $\mu\text{g}$  per lane.

**Predicted band size** : 68 kDa



Immunocytochemistry of ATG16 in HeLa cells  
with ATG16 antibody (ab106354) at 2  $\mu\text{g/ml}$ .



Immunofluorescence of ATG16 in HeLa cells  
using ab106354 at 4 ug/ml.

Immunocytochemistry/ Immunofluorescence-Anti-  
ATG16L1 antibody(ab106354)

**Please note:** All products are "FOR RESEARCH USE ONLY AND ARE NOT INTENDED FOR DIAGNOSTIC OR THERAPEUTIC USE"

### **Our Abpromise to you: Quality guaranteed and expert technical support**

---

- Replacement or refund for products not performing as stated on the datasheet
- Valid for 12 months from date of delivery
- Response to your inquiry within 24 hours
- We provide support in Chinese, English, French, German, Japanese and Spanish
- Extensive multi-media technical resources to help you
- We investigate all quality concerns to ensure our products perform to the highest standards

If the product does not perform as described on this datasheet, we will offer a refund or replacement. For full details of the Abpromise, please visit <http://www.abcam.com/abpromise> or contact our technical team.

### **Terms and conditions**

---

- Guarantee only valid for products bought direct from Abcam or one of our authorized distributors