


Product datasheet

Anti-PCTAIRE1 antibody [G6.1] ab11043

1 Image

Overview

<b>Product name</b>	Anti-PCTAIRE1 antibody [G6.1]
<b>Description</b>	Mouse monoclonal [G6.1] to PCTAIRE1
<b>Tested applications</b>	<b>Suitable for:</b> WB, IP
<b>Species reactivity</b>	<b>Reacts with:</b> Human, Xenopus laevis <b>Predicted to work with:</b> Mammal 
<b>Immunogen</b>	Synthetic peptide: DRMKKIKRQLSMTLRGGRC , corresponding to N terminal amino acids 2-19 of Human PCTAIRE1.  <a href="#">Run BLAST with</a> <a href="#">Run BLAST with</a>

Properties

<b>Form</b>	Liquid
<b>Storage instructions</b>	Shipped at 4°C. Upon delivery aliquot and store at -20°C or -80°C. Avoid repeated freeze / thaw cycles.
<b>Storage buffer</b>	Preservative: None Constituents: PBS
<b>Purity</b>	Protein A purified
<b>Clonality</b>	Monoclonal
<b>Clone number</b>	G6.1
<b>Myeloma</b>	Sp2/0
<b>Isotype</b>	IgG2b

Applications

Our [Abpromise guarantee](#) covers the use of **ab11043** in the following tested applications.

The application notes include recommended starting dilutions; optimal dilutions/concentrations should be determined by the end user.

Application	Abreviews	Notes
WB		Use a concentration of 2.5 µg/ml. Predicted molecular weight: 60 kDa.
IP		Use a concentration of 2.5 µg/ml.

## Target

### Function

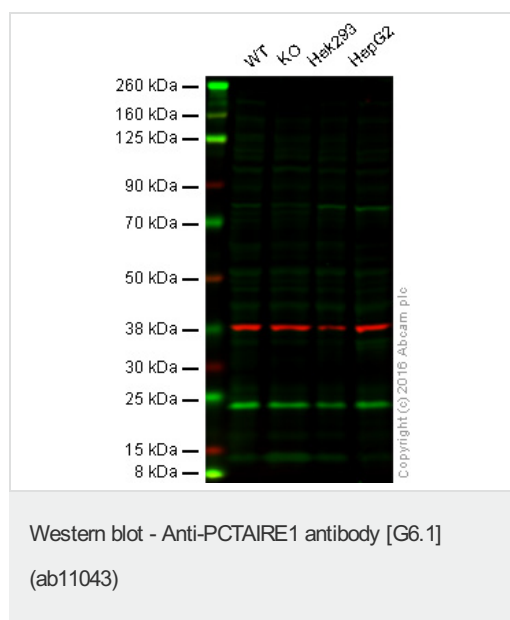
May play a role in signal transduction cascades in terminally differentiated cells.

### Sequence similarities

Belongs to the protein kinase superfamily. CMGC Ser/Thr protein kinase family. CDC2/CDKX subfamily.

Contains 1 protein kinase domain.

## Images



**Predicted band size :** 60 kDa

**Lane 1:** Wild-type HAP1 cell lysate (20 µg)

**Lane 2:** PCTAIRE1 knockout HAP1 cell lysate (20 µg)

**Lane 3:** HEK293 cell lysate (20 µg)

**Lane 4:** HepG2 cell lysate (20 µg)

**Lanes 1 - 4:** Merged signal (red and green).

Green - ab11043 n/a. Red - loading control, [ab181602](#), observed at 37 kDa.

ab11043 was shown not to react with PCTAIRE1 when PCTAIRE1 knockout samples were used. Wild-type and PCTAIRE1 knockout samples were subjected to SDS-PAGE. Ab11043 and [ab181602](#) (loading control to GAPDH) were diluted at 2.5 µg/ml and 1/10,000 dilution respectively and incubated overnight at 4°C. Blots were developed with IRDye® 800CW Goat anti-Mouse IgG (H + L) and IRDye® 680 Goat anti-Rabbit IgG (H + L) secondary antibodies at 1/10,000 dilution for 1 hour at room temperature before imaging.

**Please note:** All products are "FOR RESEARCH USE ONLY AND ARE NOT INTENDED FOR DIAGNOSTIC OR THERAPEUTIC USE"

## **Our Abpromise to you: Quality guaranteed and expert technical support**

---

- Replacement or refund for products not performing as stated on the datasheet
- Valid for 12 months from date of delivery
- Response to your inquiry within 24 hours
  
- We provide support in Chinese, English, French, German, Japanese and Spanish
- Extensive multi-media technical resources to help you
- We investigate all quality concerns to ensure our products perform to the highest standards

If the product does not perform as described on this datasheet, we will offer a refund or replacement. For full details of the Abpromise, please visit <http://www.abcam.com/abpromise> or contact our technical team.

## **Terms and conditions**

---

- Guarantee only valid for products bought direct from Abcam or one of our authorized distributors