

## Product datasheet

# Anti-KMT6 / EZH2 antibody [EPR1409(2)] ab110646

RabMAb<sup>®</sup>

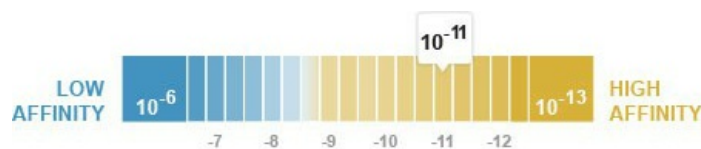
[3 References](#) [2 Images](#)

### Overview

<b>Product name</b>	Anti-KMT6 / EZH2 antibody [EPR1409(2)]
<b>Description</b>	Rabbit monoclonal [EPR1409(2)] to KMT6 / EZH2
<b>Host species</b>	Rabbit
<b>Tested applications</b>	<b>Suitable for:</b> WB <b>Unsuitable for:</b> Flow Cyt, ICC, IHC-P or IP
<b>Species reactivity</b>	<b>Reacts with:</b> Human
<b>Immunogen</b>	A synthetic peptide corresponding to residues in Human KMT6/ EZH2.
<b>Positive control</b>	HeLa, MCF7 and K562 cell lysates
<b>General notes</b>	This product is a recombinant rabbit monoclonal antibody.  Mouse, Rat: We have preliminary internal testing data to indicate this antibody may not react with these species. Please contact us for more information.  Our RabMAb <sup>®</sup> technology is a patented hybridoma-based technology for making rabbit monoclonal antibodies. For details on our patents, please refer to <a href="#">RabMAb<sup>®</sup> patents</a>

### Properties

<b>Form</b>	Liquid
<b>Storage instructions</b>	Shipped at 4°C. Store at -20°C. Stable for 12 months at -20°C.
<b>Dissociation constant (K<sub>D</sub>)</b>	K <sub>D</sub> = 7.52 x 10 <sup>-11</sup> M



[Learn more about K<sub>D</sub>](#)

<b>Storage buffer</b>	PBS 49%, Sodium azide 0.01%, Glycerol 50%, BSA 0.05%
<b>Purity</b>	Tissue culture supernatant
<b>Clonality</b>	Monoclonal
<b>Clone number</b>	EPR1409(2)

Isotype

IgG

## Applications

---

Our [Abpromise guarantee](#) covers the use of **ab110646** in the following tested applications.

The application notes include recommended starting dilutions; optimal dilutions/concentrations should be determined by the end user.

Application	Abreviews	Notes
WB		1/1000 - 1/10000. Detects a band of approximately 100 kDa (predicted molecular weight: 85 kDa).

## Application notes

Is unsuitable for Flow Cyt, ICC, IHC-P or IP.

## Target

---

### Function

Polycomb group (PcG) protein. Catalytic subunit of the PRC2/EED-EZH2 complex, which methylates 'Lys-9' and 'Lys-27' of histone H3, leading to transcriptional repression of the affected target gene. Able to mono-, di- and trimethylate 'Lys-27' of histone H3 to form H3K27me1, H3K27me2 and H3K27me3, respectively. Compared to EZH2-containing complexes, it is more abundant in embryonic stem cells and plays a major role in forming H3K27me3, which is required for embryonic stem cell identity and proper differentiation. The PRC2/EED-EZH2 complex may also serve as a recruiting platform for DNA methyltransferases, thereby linking two epigenetic repression systems. Genes repressed by the PRC2/EED-EZH2 complex include HOXC8, HOXA9, MYT1, CDKN2A and retinoic acid target genes.

### Tissue specificity

Expressed in many tissues. Overexpressed in numerous tumor types including carcinomas of the breast, colon, larynx, lymphoma and testis.

### Sequence similarities

Belongs to the histone-lysine methyltransferase family. EZ subfamily. Contains 1 SET domain.

### Developmental stage

Expression decreases during senescence of embryonic fibroblasts (HEFs). Expression peaks at the G1/S phase boundary.

### Post-translational modifications

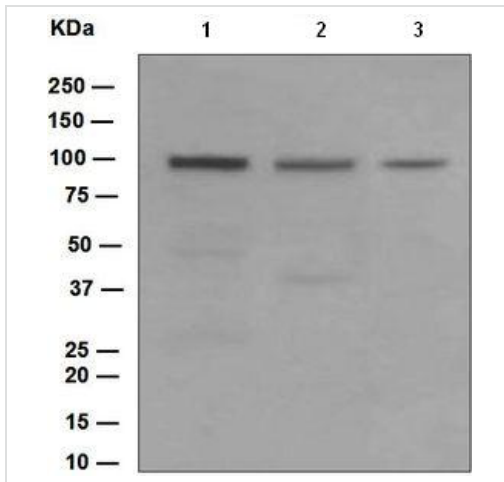
Phosphorylated by AKT1. Phosphorylation by AKT1 reduces methyltransferase activity.

### Cellular localization

Nucleus.

## Images

---



Western blot - Anti-KMT6 / EZH2 antibody  
[EPR1409(2)] (ab110646)

**All lanes :** Anti-KMT6 / EZH2 antibody  
[EPR1409(2)] (ab110646) at 1/1000 dilution

**Lane 1 :** HeLa cell lysates

**Lane 2 :** MCF7 cell lysates

**Lane 3 :** K562 cell lysates

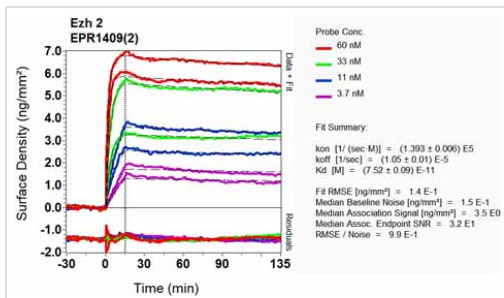
Lysates/proteins at 10 µg per lane.

### Secondary

**All lanes :** HRP labelled goat anti-rabbit at  
1/2000 dilution

**Predicted band size:** 85 kDa

**Observed band size:** 100 kDa



Other - Anti-KMT6 / EZH2 antibody [EPR1409(2)]  
(ab110646)

Equilibrium dissociation constant ( $K_D$ )

Learn more about  $K_D$

[Click here to learn more about  \$K\_D\$](#)

**Please note:** All products are "FOR RESEARCH USE ONLY AND ARE NOT INTENDED FOR DIAGNOSTIC OR THERAPEUTIC USE"

### Our Abpromise to you: Quality guaranteed and expert technical support

- Replacement or refund for products not performing as stated on the datasheet
- Valid for 12 months from date of delivery
- Response to your inquiry within 24 hours
- We provide support in Chinese, English, French, German, Japanese and Spanish
- Extensive multi-media technical resources to help you
- We investigate all quality concerns to ensure our products perform to the highest standards

If the product does not perform as described on this datasheet, we will offer a refund or replacement. For full details of the Abpromise, please visit <http://www.abcam.com/abpromise> or contact our technical team.

### Terms and conditions

- Guarantee only valid for products bought direct from Abcam or one of our authorized distributors