

Product datasheet

Anti-ALS2CR3 antibody ab110947

1 Image

Overview

Product name	Anti-ALS2CR3 antibody
Description	Rabbit polyclonal to ALS2CR3
Host species	Rabbit
Tested applications	Suitable for: IHC-P
Species reactivity	Reacts with: Human
Immunogen	Synthesized peptide derived from the internal region of Human ALS2CR3.
Positive control	Human breast carcinoma tissue

Properties

Form	Liquid
Storage instructions	Shipped at 4°C. Store at -20°C. Stable for 12 months at -20°C.
Storage buffer	pH: 7.40 Preservative: 0.02% Sodium azide Constituents: 50% Glycerol, PBS, 0.88% Sodium chloride
Purity	Immunogen affinity purified
Purification notes	The antibody was affinity-purified from rabbit antiserum by affinity-chromatography using epitope-specific immunogen.
Clonality	Polyclonal
Isotype	IgG

Applications

Our [Abpromise guarantee](#) covers the use of **ab110947** in the following tested applications.

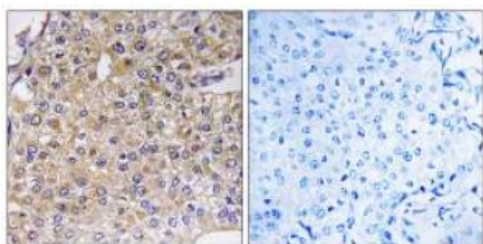
The application notes include recommended starting dilutions; optimal dilutions/concentrations should be determined by the end user.

Application	Abreviews	Notes
IHC-P		1/50 - 1/100. Perform heat mediated antigen retrieval with citrate buffer pH 6 before commencing with IHC staining protocol.

Target

Function	May regulate endosome-to-lysosome trafficking of membrane cargo, including EGFR.
Tissue specificity	Widely expressed, with highest expression in heart.
Sequence similarities	Contains 1 HAP1 N-terminal domain.
Post-translational modifications	O-glycosylated.
Cellular localization	Cytoplasm. Early endosome. Mitochondrion. Colocalizes with MGARP at the mitochondria. Translocates from the cytoplasm to the mitochondria in a MGARP-dependent manner.

Images



Immunohistochemistry analysis of paraffin-embedded Human breast carcinoma tissue using 1/50 [ab111947](#) with (right) or without (left) immunizing peptide..

Immunohistochemistry (Formalin/PFA-fixed paraffin-embedded sections) - ALS2CR3 antibody (ab110947)

Please note: All products are "FOR RESEARCH USE ONLY AND ARE NOT INTENDED FOR DIAGNOSTIC OR THERAPEUTIC USE"

Our Abpromise to you: Quality guaranteed and expert technical support

- Replacement or refund for products not performing as stated on the datasheet
- Valid for 12 months from date of delivery
- Response to your inquiry within 24 hours
- We provide support in Chinese, English, French, German, Japanese and Spanish
- Extensive multi-media technical resources to help you
- We investigate all quality concerns to ensure our products perform to the highest standards

If the product does not perform as described on this datasheet, we will offer a refund or replacement. For full details of the Abpromise, please visit <http://www.abcam.com/abpromise> or contact our technical team.

Terms and conditions

- Guarantee only valid for products bought direct from Abcam or one of our authorized distributors