

Product datasheet

# Anti-Nuclear Factor Erythroid Derived 2 like 3 antibody ab111362

1 Image

Overview

---

<b>Product name</b>	Anti-Nuclear Factor Erythroid Derived 2 like 3 antibody
<b>Description</b>	Rabbit polyclonal to Nuclear Factor Erythroid Derived 2 like 3
<b>Host species</b>	Rabbit
<b>Tested applications</b>	<b>Suitable for:</b> WB
<b>Species reactivity</b>	<b>Reacts with:</b> Human
<b>Immunogen</b>	Synthetic peptide derived from an internal sequence of Human Nuclear Factor Erythroid Derived 2 like 3.
<b>Positive control</b>	HeLa cell extracts.

Properties

---

<b>Form</b>	Liquid
<b>Storage instructions</b>	Shipped at 4°C. Store at -20°C. Stable for 12 months at -20°C.
<b>Storage buffer</b>	pH: 7.40 Preservative: 0.02% Sodium azide Constituents: 49.1% PBS, 50% Glycerol, 0.88% Sodium chloride Note: PBS without calcium and magnesium
<b>Purity</b>	Immunogen affinity purified
<b>Purification notes</b>	ab111362 was affinity-purified from rabbit antiserum by affinity-chromatography using epitope-specific immunogen.
<b>Clonality</b>	Polyclonal
<b>Isotype</b>	IgG

Applications

---

Our [Abpromise guarantee](#) covers the use of **ab111362** in the following tested applications.

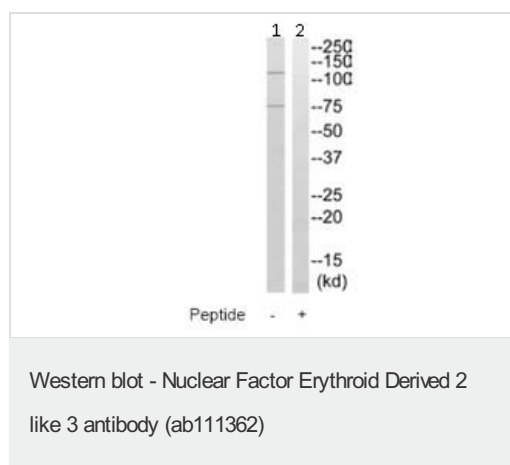
The application notes include recommended starting dilutions; optimal dilutions/concentrations should be determined by the end user.

Application	Abreviews	Notes
WB		1/500 - 1/1000. Predicted molecular weight: 76 kDa.

## Target

<b>Function</b>	Activates erythroid-specific, globin gene expression.
<b>Tissue specificity</b>	Highly expressed in human placenta and also in B-cell and monocyte cell lines. Low expression in heart, brain, lung, skeletal muscle, kidney and pancreas.
<b>Sequence similarities</b>	Belongs to the bZIP family. CNC subfamily. Contains 1 bZIP domain.
<b>Cellular localization</b>	Nucleus.

## Images



**All lanes :** Anti-Nuclear Factor Erythroid Derived 2 like 3 antibody (ab111362) at 1/500 dilution

**Lane 1 :** HeLa Cell extract

**Lane 2 :** HeLa Cell extract with immunizing peptide at 10 µg

Lysates/proteins at 30 µg per lane.

**Predicted band size:** 76 kDa

Positive control loading is 5-30 µg of total protein

**Please note:** All products are "FOR RESEARCH USE ONLY AND ARE NOT INTENDED FOR DIAGNOSTIC OR THERAPEUTIC USE"

## Our Abpromise to you: Quality guaranteed and expert technical support

- Replacement or refund for products not performing as stated on the datasheet
- Valid for 12 months from date of delivery
- Response to your inquiry within 24 hours
- We provide support in Chinese, English, French, German, Japanese and Spanish
- Extensive multi-media technical resources to help you
- We investigate all quality concerns to ensure our products perform to the highest standards

If the product does not perform as described on this datasheet, we will offer a refund or replacement. For full details of the Abpromise, please visit <http://www.abcam.com/abpromise> or contact our technical team.

## Terms and conditions

---

- Guarantee only valid for products bought direct from Abcam or one of our authorized distributors