

Product datasheet

Anti-SLC25A12 antibody ab111415

1 Image

Overview

| | |
|----------------------------|---|
| Product name | Anti-SLC25A12 antibody |
| Description | Rabbit polyclonal to SLC25A12 |
| Host species | Rabbit |
| Tested applications | Suitable for: IHC-P |
| Species reactivity | Reacts with: Human |
| Immunogen | Synthetic peptide derived from an internal sequence of the Human SLC25A12 protein (O75746). |
| Positive control | Human prostate carcinoma tissue. |

Properties

| | |
|-----------------------------|---|
| Form | Liquid |
| Storage instructions | Shipped at 4°C. Store at -20°C. Stable for 12 months at -20°C. |
| Storage buffer | pH: 7.40 Preservative: 0.02% Sodium azide Constituents: PBS, 50% Glycerol, 0.88% Sodium chloride Note: PBS without calcium and magnesium |
| Purity | Immunogen affinity purified |
| Purification notes | Affinity-purified from rabbit antiserum by affinity-chromatography using epitope-specific immunogen. |
| Clonality | Polyclonal |
| Isotype | IgG |

Applications

Our [Abpromise guarantee](#) covers the use of **ab111415** in the following tested applications.

The application notes include recommended starting dilutions; optimal dilutions/concentrations should be determined by the end user.

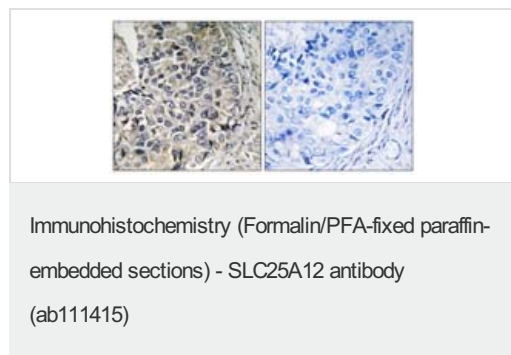
| Application | Abreviews | Notes |
|-------------|-----------|-------|
|-------------|-----------|-------|

| Application | Abreviews | Notes |
|-------------|-----------|--|
| IHC-P | | 1/50 - 1/100. Perform heat mediated antigen retrieval with citrate buffer pH 6 before commencing with IHC staining protocol. |

Target

| | |
|-------------------------------|---|
| Function | Calcium-dependent mitochondrial aspartate and glutamate carrier. May have a function in the urea cycle. |
| Tissue specificity | High levels in heart and skeletal muscle, low in brain and very low in kidney. |
| Involvement in disease | Defects in SLC25A12 are the cause of aspartate-glutamate carrier 1 deficiency (AGC1D) [MIM:612949]; also called global cerebral hypomyelination. This syndrome consists of a child severe psychomotor retardation, hypotonia and hypomyelination of the central nervous system. |
| Sequence similarities | Belongs to the mitochondrial carrier family. Contains 4 EF-hand domains. Contains 3 Solcar repeats. |
| Cellular localization | Mitochondrion inner membrane. |

Images



Immunohistochemistry analysis of paraffin-embedded human prostate carcinoma tissue, using SLC25A12 Antibody (ab111415). The picture on the right is treated with the synthesized peptide.

Please note: All products are "FOR RESEARCH USE ONLY AND ARE NOT INTENDED FOR DIAGNOSTIC OR THERAPEUTIC USE"

Our Abpromise to you: Quality guaranteed and expert technical support

- Replacement or refund for products not performing as stated on the datasheet
- Valid for 12 months from date of delivery
- Response to your inquiry within 24 hours
- We provide support in Chinese, English, French, German, Japanese and Spanish
- Extensive multi-media technical resources to help you
- We investigate all quality concerns to ensure our products perform to the highest standards

If the product does not perform as described on this datasheet, we will offer a refund or replacement. For full details of the Abpromise, please visit <http://www.abcam.com/abpromise> or contact our technical team.

Terms and conditions

- Guarantee only valid for products bought direct from Abcam or one of our authorized distributors