


## Product datasheet

# Anti-alpha smooth muscle Actin antibody ab112022

[2 Abreviews](#) [3 Images](#)

### Overview

---

<b>Product name</b>	Anti-alpha smooth muscle Actin antibody
<b>Description</b>	Goat polyclonal to alpha smooth muscle Actin
<b>Host species</b>	Goat
<b>Tested applications</b>	<b>Suitable for:</b> WB, IHC-P
<b>Species reactivity</b>	<b>Reacts with:</b> Human <b>Predicted to work with:</b> Mouse, Rat, Dog 
<b>Immunogen</b>	Synthetic peptide: EEEDSTALVC , corresponding to N terminal amino acids 3-12 of Human alpha smooth muscle Actin. <a href="#">Run BLAST with</a> <a href="#">Run BLAST with</a>
<b>Positive control</b>	Human Colon, smooth muscle and Human Vessel tissues; Human Duodenum lysate.

### Properties

---

<b>Form</b>	Liquid
<b>Storage instructions</b>	Shipped at 4°C. Upon delivery aliquot and store at -20°C. Avoid freeze / thaw cycles.
<b>Storage buffer</b>	pH: 7.30 Preservative: 0.02% Sodium azide Constituents: 99% Tris buffered saline, 0.5% BSA
<b>Purity</b>	Immunogen affinity purified
<b>Clonality</b>	Polyclonal
<b>Isotype</b>	IgG

### Applications

---

Our [Abpromise guarantee](#) covers the use of **ab112022** in the following tested applications.

The application notes include recommended starting dilutions; optimal dilutions/concentrations should be determined by the end user.

Application	Abreviews	Notes
WB		Use a concentration of 0.3 - 1 µg/ml. Predicted molecular weight: 42 kDa.
IHC-P		Use a concentration of 2.5 µg/ml. Perform heat mediated antigen retrieval with citrate buffer pH 6 before commencing with IHC staining protocol.

## Target

### Function

Actins are highly conserved proteins that are involved in various types of cell motility and are ubiquitously expressed in all eukaryotic cells.

### Involvement in disease

Defects in ACTA2 are the cause of aortic aneurysm familial thoracic type 6 (AAT6) [MIM:611788]. AATs are characterized by permanent dilation of the thoracic aorta usually due to degenerative changes in the aortic wall. They are primarily associated with a characteristic histologic appearance known as 'medial necrosis' or 'Erdheim cystic medial necrosis' in which there is degeneration and fragmentation of elastic fibers, loss of smooth muscle cells, and an accumulation of basophilic ground substance.

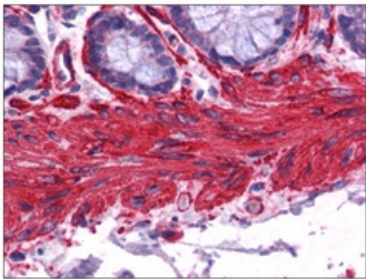
### Sequence similarities

Belongs to the actin family.

### Cellular localization

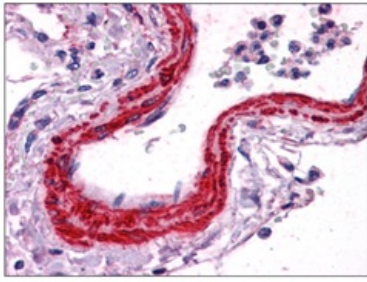
Cytoplasm > cytoskeleton.

## Images



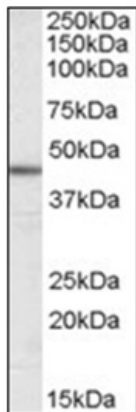
Immunohistochemical expression of alpha smooth muscle Actin in Formalin-Fixed, Paraffin-Embedded Human Colon, smooth muscle using ab112022 at 2.5 µg/ml.

Immunohistochemistry (Formalin/PFA-fixed paraffin-embedded sections) - alpha smooth muscle Actin antibody (ab112022)



Immunohistochemical expression of alpha smooth muscle Actin in Formalin-Fixed, Paraffin-Embedded Human vessel using ab112022 at 2.5 µg/ml.

Immunohistochemistry (Formalin/PFA-fixed paraffin-embedded sections) - alpha smooth muscle Actin antibody (ab112022)



Anti-alpha smooth muscle Actin antibody (ab112022) at 0.1 µg/ml + Human Duodenum lysate at 35 µg

Developed using the ECL technique.

**Predicted band size:** 42 kDa

Western blot - alpha smooth muscle Actin antibody (ab112022)

**Please note:** All products are "FOR RESEARCH USE ONLY AND ARE NOT INTENDED FOR DIAGNOSTIC OR THERAPEUTIC USE"

### Our Abpromise to you: Quality guaranteed and expert technical support

- Replacement or refund for products not performing as stated on the datasheet
- Valid for 12 months from date of delivery
- Response to your inquiry within 24 hours
- We provide support in Chinese, English, French, German, Japanese and Spanish
- Extensive multi-media technical resources to help you
- We investigate all quality concerns to ensure our products perform to the highest standards

If the product does not perform as described on this datasheet, we will offer a refund or replacement. For full details of the Abpromise, please visit <http://www.abcam.com/abpromise> or contact our technical team.

### Terms and conditions

- Guarantee only valid for products bought direct from Abcam or one of our authorized distributors