

Product datasheet

Anti-Integrin alpha 4 antibody [R1-2] (Phycoerythrin)  
ab112440

1 Image

Overview

<b>Product name</b>	Anti-Integrin alpha 4 antibody [R1-2] (Phycoerythrin)
<b>Description</b>	Rat monoclonal [R1-2] to Integrin alpha 4 (Phycoerythrin)
<b>Host species</b>	Rat
<b>Conjugation</b>	Phycoerythrin. Ex: 488nm, Em: 575nm
<b>Tested applications</b>	<b>Suitable for:</b> Flow Cyt
<b>Species reactivity</b>	<b>Reacts with:</b> Mouse
<b>Immunogen</b>	Mouse Peyers Patch HEV binding lymphoma line (TK1).
<b>Positive control</b>	Mouse TK1 cell line (Strains BALB/c, C57BL/6, C3H/He, CBA/J and AKR).

Properties

<b>Form</b>	Liquid
<b>Storage instructions</b>	Shipped at 4°C. Store at +4°C.
<b>Storage buffer</b>	Preservative: 0.02% Sodium azide Constituents: 99% PBS, 0.5% BSA
<b>Purity</b>	Protein G purified
<b>Purification notes</b>	ab112440 was purified from ascitic fluid via Protein G Chromatography.
<b>Clonality</b>	Monoclonal
<b>Clone number</b>	R1-2
<b>Myeloma</b>	P3x63-Ag8.653
<b>Isotype</b>	IgG2b

Applications

Our [Abpromise guarantee](#) covers the use of **ab112440** in the following tested applications.

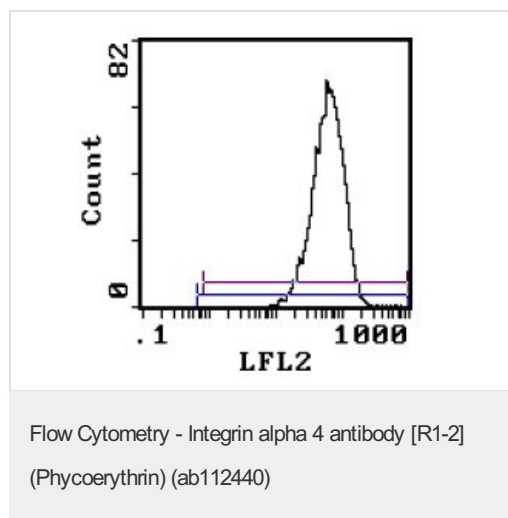
The application notes include recommended starting dilutions; optimal dilutions/concentrations should be determined by the end user.

Application	Abreviews	Notes
Flow Cyt		Use 1µg for 10 <sup>6</sup> cells.

## Target

<b>Function</b>	Integrins alpha-4/beta-1 (VLA-4) and alpha-4/beta-7 are receptors for fibronectin. They recognize one or more domains within the alternatively spliced CS-1 and CS-5 regions of fibronectin. They are also receptors for VCAM1. Integrin alpha-4/beta-1 recognizes the sequence Q-I-D-S in VCAM1. Integrin alpha-4/beta-7 is also a receptor for MADCAM1. It recognizes the sequence L-D-T in MADCAM1. On activated endothelial cells integrin VLA-4 triggers homotypic aggregation for most VLA-4-positive leukocyte cell lines. It may also participate in cytolytic T-cell interactions with target cells.
<b>Sequence similarities</b>	Belongs to the integrin alpha chain family. Contains 7 FG-GAP repeats.
<b>Domain</b>	The SG1 motif is involved in binding to chondroitin sulfate glycosaminoglycan and cell adhesion.
<b>Post-translational modifications</b>	Phosphorylation on Ser-1027 inhibits PXN binding.
<b>Cellular localization</b>	Membrane.

## Images



ab112440 at 1.0 µg/10<sup>6</sup> cells detecting Integrin alpha 4 in Balb/c Mouse TK1 cell line by Flow Cytometry. 100% more of the cells were stained than in the control (PE Rat IgG2b).

**Please note:** All products are "FOR RESEARCH USE ONLY AND ARE NOT INTENDED FOR DIAGNOSTIC OR THERAPEUTIC USE"

## Our Abpromise to you: Quality guaranteed and expert technical support

- Replacement or refund for products not performing as stated on the datasheet
- Valid for 12 months from date of delivery
- Response to your inquiry within 24 hours
- We provide support in Chinese, English, French, German, Japanese and Spanish

- Extensive multi-media technical resources to help you
- We investigate all quality concerns to ensure our products perform to the highest standards

If the product does not perform as described on this datasheet, we will offer a refund or replacement. For full details of the Abpromise, please visit <http://www.abcam.com/abpromise> or contact our technical team.

### **Terms and conditions**

---

- Guarantee only valid for products bought direct from Abcam or one of our authorized distributors