

Product datasheet

Anti-SYPL1 antibody ab112589

1 Image

Overview

Product name	Anti-SYPL1 antibody
Description	Rabbit polyclonal to SYPL1
Host species	Rabbit
Tested applications	Suitable for: WB
Species reactivity	Reacts with: Human
Immunogen	KLH conjugated synthetic peptide between 18-48 amino acids from the N-terminal region of Human SYPL1 (NP_006745.1 , NP_874384.1).
Positive control	MDA-MB231 cell line lysate

Properties

Form	Liquid
Storage instructions	Shipped at 4°C. Store at 4°C (up to 6 months). Store at -20°C long term.
Storage buffer	Preservative: 0.09% Sodium azide Constituent: 99% PBS
Purity	Immunogen affinity purified
Purification notes	Purified through a protein A column, followed by peptide affinity purification.
Clonality	Polyclonal
Isotype	IgG

Applications

Our [Abpromise guarantee](#) covers the use of **ab112589** in the following tested applications.

The application notes include recommended starting dilutions; optimal dilutions/concentrations should be determined by the end user.

Application	Abreviews	Notes
WB		1/100 - 1/500. Predicted molecular weight: 29 kDa.

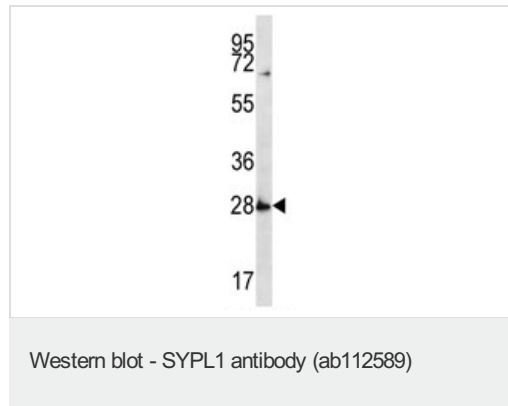
Target

Sequence similarities

Belongs to the synaptophysin/synaptobrevin family.
Contains 1 MARVEL domain.

Cellular localization

Cytoplasmic vesicle membrane. Melanosome. Cytoplasmic transport vesicles (By similarity).
Identified by mass spectrometry in melanosome fractions from stage I to stage IV.

Images

Anti-SYPL1 antibody (ab112589) at 1/100
dilution + MDA-MB231 cell line lysate at 35 µg

Predicted band size: 29 kDa

Please note: All products are "FOR RESEARCH USE ONLY AND ARE NOT INTENDED FOR DIAGNOSTIC OR THERAPEUTIC USE"

Our Abpromise to you: Quality guaranteed and expert technical support

- Replacement or refund for products not performing as stated on the datasheet
- Valid for 12 months from date of delivery
- Response to your inquiry within 24 hours

- We provide support in Chinese, English, French, German, Japanese and Spanish
- Extensive multi-media technical resources to help you
- We investigate all quality concerns to ensure our products perform to the highest standards

If the product does not perform as described on this datasheet, we will offer a refund or replacement. For full details of the Abpromise, please visit <http://www.abcam.com/abpromise> or contact our technical team.

Terms and conditions

- Guarantee only valid for products bought direct from Abcam or one of our authorized distributors