


Product datasheet

Anti-A RAF antibody ab113271

1 Image

Overview

<b>Product name</b>	Anti-A RAF antibody
<b>Description</b>	Rabbit polyclonal to A RAF
<b>Host species</b>	Rabbit
<b>Tested applications</b>	<b>Suitable for:</b> IP <b>Unsuitable for:</b> WB
<b>Species reactivity</b>	<b>Reacts with:</b> Human <b>Predicted to work with:</b> Sheep, Rabbit, Cow, Dog, Pig, Chimpanzee, Rhesus monkey, Gorilla, Orangutan, Bat 
<b>Immunogen</b>	Synthetic peptide, corresponding to a region within N terminal amino acids 1-50 of Human A RAF (NP_001645.1).
<b>Positive control</b>	HeLa whole cell lysates.

Properties

<b>Form</b>	Liquid
<b>Storage instructions</b>	Shipped at 4°C. Upon delivery aliquot and store at -20°C. Avoid freeze / thaw cycles.
<b>Storage buffer</b>	Constituents: 99% Tris citrate/phosphate, 0.09% Sodium chloride Note: pH 7 to 8.
<b>Purity</b>	Immunogen affinity purified
<b>Purification notes</b>	ab113271 was affinity purified using an epitope specific to A RAF immobilized on solid support.
<b>Clonality</b>	Polyclonal
<b>Isotype</b>	IgG

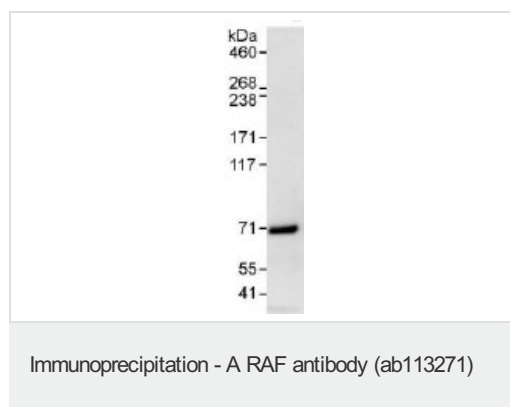
Applications

Our [Abpromise guarantee](#) covers the use of **ab113271** in the following tested applications.

The application notes include recommended starting dilutions; optimal dilutions/concentrations should be determined by the end user.

Application	Abreviews	Notes
IP		Use at 2-10 µg/mg of lysate.
<b>Application notes</b>	Is unsuitable for WB.	
<b>Target</b>		
<b>Function</b>	Involved in the transduction of mitogenic signals from the cell membrane to the nucleus.	
<b>Tissue specificity</b>	Predominantly in urogenital tissues.	
<b>Sequence similarities</b>	<p>Belongs to the protein kinase superfamily. TKL Ser/Thr protein kinase family. RAF subfamily.</p> <p>Contains 1 phorbol-ester/DAG-type zinc finger.</p> <p>Contains 1 protein kinase domain.</p> <p>Contains 1 RBD (Ras-binding) domain.</p>	

## Images



Detection of A RAF by Western Blot of Immunoprecipitate.

anti-A RAF at 1µg/ml staining A RAF in HeLa whole cell lysate immunoprecipitated using ab113271 at 6µg/mg lysate (1 mg/IP; 20% of IP loaded/lane).

Detection: Chemiluminescence with exposure time of 3 seconds.

**Please note:** All products are "FOR RESEARCH USE ONLY AND ARE NOT INTENDED FOR DIAGNOSTIC OR THERAPEUTIC USE"

## Our Abpromise to you: Quality guaranteed and expert technical support

- Replacement or refund for products not performing as stated on the datasheet
- Valid for 12 months from date of delivery
- Response to your inquiry within 24 hours
- We provide support in Chinese, English, French, German, Japanese and Spanish
- Extensive multi-media technical resources to help you
- We investigate all quality concerns to ensure our products perform to the highest standards

If the product does not perform as described on this datasheet, we will offer a refund or replacement. For full details of the Abpromise, please visit <http://www.abcam.com/abpromise> or contact our technical team.

## Terms and conditions

- Guarantee only valid for products bought direct from Abcam or one of our authorized distributors