

Product datasheet

Anti-RAB2B antibody ab113797

1 Image

Overview

Product name	Anti-RAB2B antibody
Description	Rabbit polyclonal to RAB2B
Host species	Rabbit
Tested applications	Suitable for: WB
Species reactivity	Reacts with: Human
Immunogen	Synthetic peptide corresponding to a region within C terminal amino acids 162-211 (NTAKEIYRKI QQGLFDVHNE ANGIKIGPQQ SISTSVGPSA SQRNSRDIGS) of Human RAB2B (NP_116235). Run BLAST with ExPASy Run BLAST with NCBI
Positive control	U937 cell lysate

Properties

Form	Liquid
Storage instructions	Shipped at 4°C. Upon delivery aliquot and store at -20°C. Avoid repeated freeze / thaw cycles.
Storage buffer	Constituents: 98% PBS, 2% Sucrose
Purity	Immunogen affinity purified
Clonality	Polyclonal
Isotype	IgG

Applications

Our [Abpromise guarantee](#) covers the use of **ab113797** in the following tested applications.

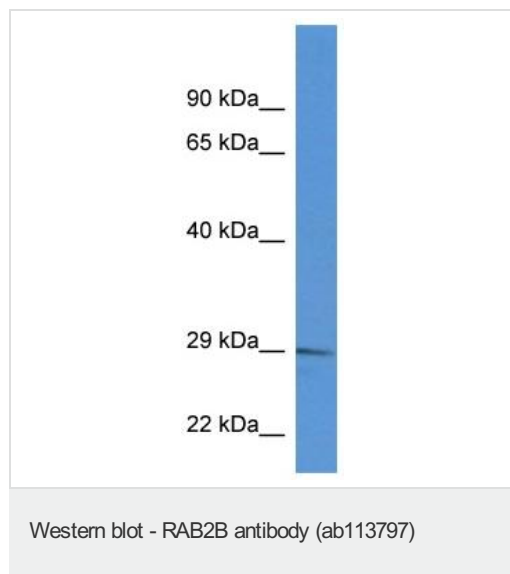
The application notes include recommended starting dilutions; optimal dilutions/concentrations should be determined by the end user.

Application	Abreviews	Notes
WB		Use a concentration of 1 µg/ml. Predicted molecular weight: 24 kDa. Good results were obtained when blocked with 5% non-fat dry milk in 0.05% PBS-T.

Target

Function	Required for protein transport from the endoplasmic reticulum to the Golgi complex.
Tissue specificity	Expressed in kidney, prostate, lung, liver, thymus, colon, pancreas, and skeletal muscle, and low levels in placenta. Not detected in heart, brain, spleen, testis, ovary, small intestine and leukocyte.
Sequence similarities	Belongs to the small GTPase superfamily. Rab family.
Cellular localization	Cell membrane. Endoplasmic reticulum membrane. Golgi apparatus membrane.

Images



Anti-RAB2B antibody (ab113797) at 1 µg/ml +
U937 cell lysate at 10 µg

Predicted band size: 24 kDa

Gel concentration: 12%

Please note: All products are "FOR RESEARCH USE ONLY AND ARE NOT INTENDED FOR DIAGNOSTIC OR THERAPEUTIC USE"

Our Abpromise to you: Quality guaranteed and expert technical support

- Replacement or refund for products not performing as stated on the datasheet
- Valid for 12 months from date of delivery
- Response to your inquiry within 24 hours
- We provide support in Chinese, English, French, German, Japanese and Spanish
- Extensive multi-media technical resources to help you
- We investigate all quality concerns to ensure our products perform to the highest standards

If the product does not perform as described on this datasheet, we will offer a refund or replacement. For full details of the Abpromise, please visit <http://www.abcam.com/abpromise> or contact our technical team.

Terms and conditions

- Guarantee only valid for products bought direct from Abcam or one of our authorized distributors