

Product datasheet

Anti-PNRC2 antibody ab113834

1 Image

Overview

Product name	Anti-PNRC2 antibody
Description	Rabbit polyclonal to PNRC2
Host species	Rabbit
Tested applications	Suitable for: WB
Species reactivity	Reacts with: Rat Predicted to work with: Mouse, Rabbit, Horse, Chicken, Guinea pig, Cow, Cat, Dog, Pig
Immunogen	Synthetic peptide, corresponding to N terminal amino acids 1-50 (MGGGERYNIP DPQSRNASKN QQQHNRQKTK DQNSQMKIVH KKKERGHGYN) of Rat PNRC2 (NP_001096830). Run BLAST with ExPASy Run BLAST with NCBI
Positive control	Rat kidney lysate

Properties

Form	Liquid
Storage instructions	Shipped at 4°C. Upon delivery aliquot and store at -20°C. Avoid repeated freeze / thaw cycles.
Storage buffer	Constituents: 97% PBS, 2% Sucrose
Purity	Immunogen affinity purified
Clonality	Polyclonal
Isotype	IgG

Applications

Our [Abpromise guarantee](#) covers the use of **ab113834** in the following tested applications.

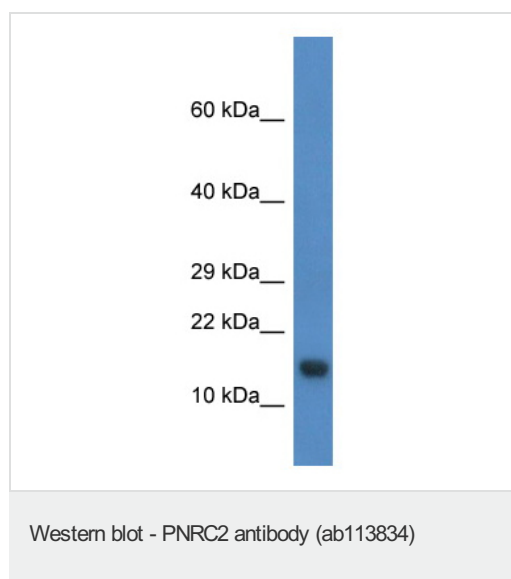
The application notes include recommended starting dilutions; optimal dilutions/concentrations should be determined by the end user.

Application	Abreviews	Notes
WB		Use a concentration of 1 µg/ml. Predicted molecular weight: 15 kDa. Good results were obtained when blocked with 5% non-fat dry milk in 0.05% PBS-T.

Target

Function	Involved in nonsense-mediated mRNA decay (NMD) by acting as a bridge between the mRNA decapping complex and the NMD machinery. May act by targeting the NMD machinery to the P-body and recruiting the decapping machinery to aberrant mRNAs. Required for UPF1/RENT1 localization to the P-body. Also acts as a nuclear receptor coactivator. May play a role in controlling the energy balance between energy storage and energy expenditure.
Tissue specificity	Expressed in heart, lung, muscle and brain.
Sequence similarities	Belongs to the PNRC family. PNRC2 subfamily.
Domain	The interaction between PNRC2 and nuclear receptors is dependent on the SH3 binding motif.
Cellular localization	Nucleus. Cytoplasm > P-body.

Images



Anti-PNRC2 antibody (ab113834) at 1 µg/ml +
Rat kidney lysate at 10 µg

Predicted band size: 15 kDa

Gel concentration: 10-20%

Please note: All products are "FOR RESEARCH USE ONLY AND ARE NOT INTENDED FOR DIAGNOSTIC OR THERAPEUTIC USE"

Our Abpromise to you: Quality guaranteed and expert technical support

- Replacement or refund for products not performing as stated on the datasheet
- Valid for 12 months from date of delivery
- Response to your inquiry within 24 hours
- We provide support in Chinese, English, French, German, Japanese and Spanish
- Extensive multi-media technical resources to help you
- We investigate all quality concerns to ensure our products perform to the highest standards

If the product does not perform as described on this datasheet, we will offer a refund or replacement. For full details of the Abpromise, please visit <http://www.abcam.com/abpromise> or contact our technical team.

Terms and conditions

- Guarantee only valid for products bought direct from Abcam or one of our authorized distributors