

Product datasheet

Anti-SSR2 antibody ab113840

1 Image

Overview

Product name	Anti-SSR2 antibody
Description	Rabbit polyclonal to SSR2
Host species	Rabbit
Tested applications	Suitable for: WB
Species reactivity	Reacts with: Mouse Predicted to work with: Rat, Rabbit, Horse, Chicken, Guinea pig, Cow, Cat, Dog, Zebrafish
Immunogen	Synthetic peptide corresponding to a region within C terminal amino acids 99-148 (KAGYFNFTSA TITYLAQEDG VVIGSTSAPG GGILAQREFD RFSPHFL) of Mouse SSR2 (NP_079724). Run BLAST with ExPASy Run BLAST with NCBI
Positive control	Mouse pancreas lysate

Properties

Form	Liquid
Storage instructions	Shipped at 4°C. Upon delivery aliquot and store at -20°C. Avoid repeated freeze / thaw cycles.
Storage buffer	Constituents: 98% PBS, 2% Sucrose
Purity	Immunogen affinity purified
Clonality	Polyclonal
Isotype	IgG

Applications

Our [Abpromise guarantee](#) covers the use of **ab113840** in the following tested applications.

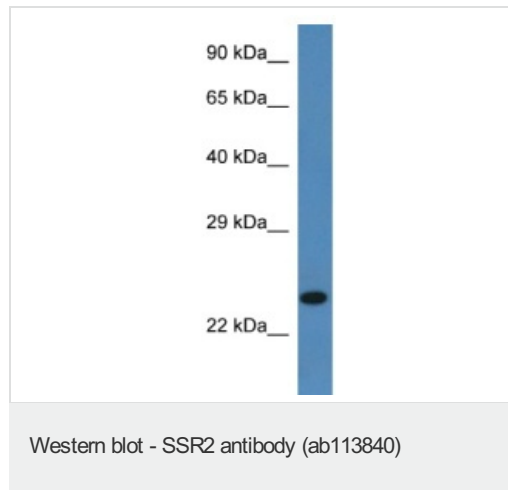
The application notes include recommended starting dilutions; optimal dilutions/concentrations should be determined by the end user.

Application	Abreviews	Notes
WB		Use a concentration of 1 µg/ml. Predicted molecular weight: 20 kDa. Good results were obtained when blocked with 5% non-fat dry milk in 0.05% PBS-T.

Target

Function	TRAP proteins are part of a complex whose function is to bind calcium to the ER membrane and thereby regulate the retention of ER resident proteins.
Sequence similarities	Belongs to the TRAP-beta family.
Cellular localization	Endoplasmic reticulum membrane.

Images



Anti-SSR2 antibody (ab113840) at 1 µg/ml +
Mouse pancreas lysate at 10 µg

Predicted band size: 20 kDa

Gel concentration: 12%

Please note: All products are "FOR RESEARCH USE ONLY AND ARE NOT INTENDED FOR DIAGNOSTIC OR THERAPEUTIC USE"

Our Abpromise to you: Quality guaranteed and expert technical support

- Replacement or refund for products not performing as stated on the datasheet
- Valid for 12 months from date of delivery
- Response to your inquiry within 24 hours

- We provide support in Chinese, English, French, German, Japanese and Spanish
- Extensive multi-media technical resources to help you
- We investigate all quality concerns to ensure our products perform to the highest standards

If the product does not perform as described on this datasheet, we will offer a refund or replacement. For full details of the Abpromise, please visit <http://www.abcam.com/abpromise> or contact our technical team.

Terms and conditions

- Guarantee only valid for products bought direct from Abcam or one of our authorized distributors