

Product datasheet

Anti-KLHL25 antibody ab113888

[4 Images](#)

Overview

Product name	Anti-KLHL25 antibody
Description	Chicken polyclonal to KLHL25
Host species	Chicken
Tested applications	Suitable for: WB, ELISA, IHC-P
Species reactivity	Reacts with: Human
Immunogen	Synthetic peptide corresponding to Human KLHL25 (internal sequence). Immunogen is a 14 amino acid peptide near the center of human KLHL25.
Positive control	Human spleen, thymus and tonsil tissues; Jurkat cell lysate

Properties

Form	Liquid
Storage instructions	Shipped at 4°C. Store at +4°C short term (1-2 weeks). Store at -20°C or -80°C. Avoid freeze / thaw cycle.
Storage buffer	Preservative: 0.02% Sodium azide Constituent: 99% PBS
Purity	Immunogen affinity purified
Clonality	Polyclonal
Isotype	IgG

Applications

Our [Abpromise guarantee](#) covers the use of **ab113888** in the following tested applications.

The application notes include recommended starting dilutions; optimal dilutions/concentrations should be determined by the end user.

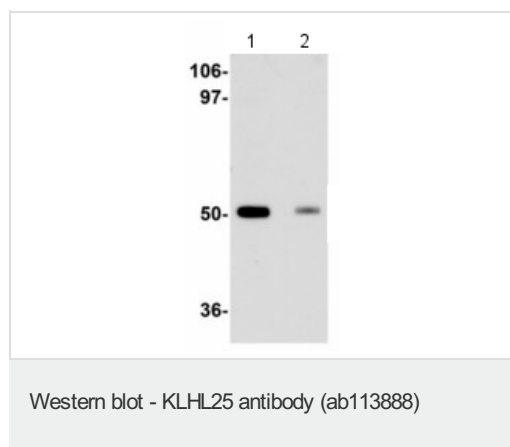
Application	Abreviews	Notes
WB		Use a concentration of 1 - 2 µg/ml. Predicted molecular weight: 66 kDa.
ELISA		Use at an assay dependent dilution.

Application	Abreviews	Notes
IHC-P		Use a concentration of 5 µg/ml.

Target

Sequence similarities Contains 1 BTB (POZ) domain.
Contains 6 Kelch repeats.

Images

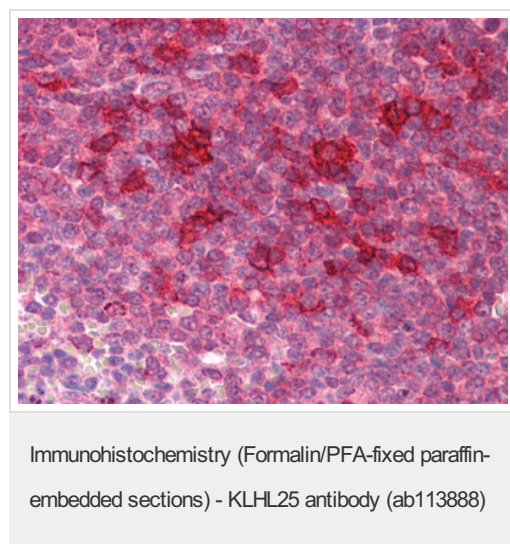


All lanes : Anti-KLHL25 antibody (ab113888)
at 1 µg/ml

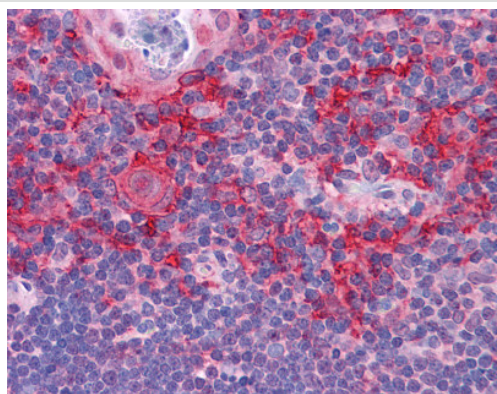
Lane 1 : Jurkat cell lysate

Lane 2 : Jurkat cell lysate with with blocking
peptide

Predicted band size: 66 kDa

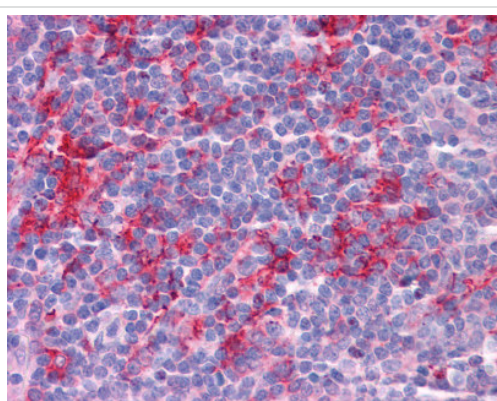


ab113888, at 5 µg/ml, staining KLHL25 in
formalin fixed, paraffin embedded Human
spleen tissue by Immunohistochemistry.



Immunohistochemistry (Formalin/PFA-fixed paraffin-embedded sections) - KLHL25 antibody (ab113888)

ab113888, at 5 µg/ml, staining KLHL25 in formalin fixed, paraffin embedded Human thymus tissue by Immunohistochemistry.



Immunohistochemistry (Formalin/PFA-fixed paraffin-embedded sections) - KLHL25 antibody (ab113888)

ab113888, at 5 µg/ml, staining KLHL25 in formalin fixed, paraffin embedded Human tonsil tissue by Immunohistochemistry.

Please note: All products are "FOR RESEARCH USE ONLY AND ARE NOT INTENDED FOR DIAGNOSTIC OR THERAPEUTIC USE"

Our Abpromise to you: Quality guaranteed and expert technical support

- Replacement or refund for products not performing as stated on the datasheet
- Valid for 12 months from date of delivery
- Response to your inquiry within 24 hours
- We provide support in Chinese, English, French, German, Japanese and Spanish
- Extensive multi-media technical resources to help you
- We investigate all quality concerns to ensure our products perform to the highest standards

If the product does not perform as described on this datasheet, we will offer a refund or replacement. For full details of the Abpromise, please visit <http://www.abcam.com/abpromise> or contact our technical team.

Terms and conditions

- Guarantee only valid for products bought direct from Abcam or one of our authorized distributors