


Product datasheet

Anti-ELMO2 antibody ab113976

2 Images

Overview

| | |
|----------------------------|---|
| Product name | Anti-ELMO2 antibody |
| Description | Goat polyclonal to ELMO2 |
| Host species | Goat |
| Tested applications | Suitable for: WB, IHC-P |
| Species reactivity | Reacts with: Human Predicted to work with: Mouse, Cow  |
| Immunogen | Synthetic peptide:C- PKEPSSYDFVYHYG (with a Cysteine residue linker), corresponding to C terminal amino acids 707-720 of Human ELMO2 Run BLAST with Run BLAST with |
| Positive control | Human brain lysate Human prostate tissue |

Properties

| | |
|-----------------------------|--|
| Form | Liquid |
| Storage instructions | Shipped at 4°C. Store at -20°C. |
| Storage buffer | pH: 7.30 Preservative: 0.02% Sodium azide Constituents: 99% Tris buffered saline, 0.5% BSA |
| Purity | Immunogen affinity purified |
| Clonality | Polyclonal |
| Isotype | IgG |

Applications

Our [Abpromise guarantee](#) covers the use of **ab113976** in the following tested applications.

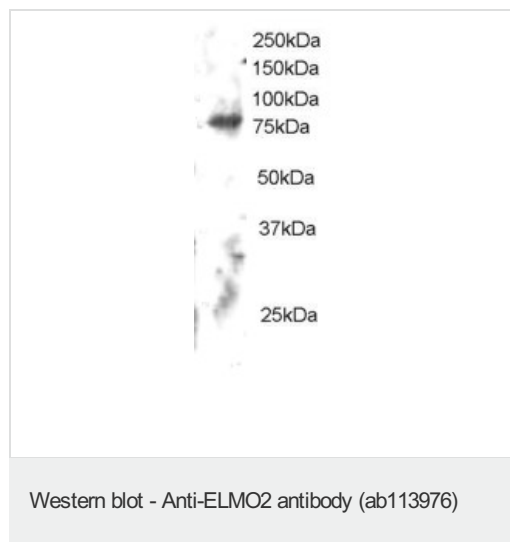
The application notes include recommended starting dilutions; optimal dilutions/concentrations should be determined by the end user.

| Application | Abreviews | Notes |
|-------------|-----------|---|
| WB | | Use a concentration of 1 - 3 µg/ml. Predicted molecular weight: 83 kDa. |
| IHC-P | | Use a concentration of 3.75 µg/ml. Perform heat mediated antigen retrieval with citrate buffer pH 6 before commencing with IHC staining protocol. |

Target

| | |
|------------------------------|--|
| Function | Involved in cytoskeletal rearrangements required for phagocytosis of apoptotic cells and cell motility. Acts in association with DOCK1 and CRK. Was initially proposed to be required in complex with DOCK1 to activate Rac Rho small GTPases. May enhance the guanine nucleotide exchange factor (GEF) activity of DOCK1. |
| Tissue specificity | Widely expressed, with a higher expression in skeletal muscle, kidney and placenta. |
| Sequence similarities | Contains 1 ELMO domain. Contains 1 PH domain. |
| Cellular localization | Cytoplasm. Cytoplasm > cytosol. Membrane. |

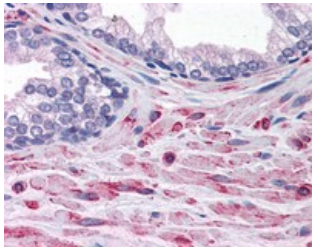
Images



Anti-ELMO2 antibody (ab113976) at 2 µg/ml +
Human brain lysate in RIPA buffer at 30 µg

Predicted band size: 83 kDa

ab113976 incubated for 12 hour. Detected
using chemiluminescence.



ab113976, at 3.75 µg/ml, staining ELMO2 in formalin fixed paraffin embedded Human prostate by Immunohistochemistry.

Immunohistochemistry (Formalin/PFA-fixed paraffin-embedded sections) - Anti-ELMO2 antibody (ab113976)

Please note: All products are "FOR RESEARCH USE ONLY AND ARE NOT INTENDED FOR DIAGNOSTIC OR THERAPEUTIC USE"

Our Abpromise to you: Quality guaranteed and expert technical support

- Replacement or refund for products not performing as stated on the datasheet
- Valid for 12 months from date of delivery
- Response to your inquiry within 24 hours
- We provide support in Chinese, English, French, German, Japanese and Spanish
- Extensive multi-media technical resources to help you
- We investigate all quality concerns to ensure our products perform to the highest standards

If the product does not perform as described on this datasheet, we will offer a refund or replacement. For full details of the Abpromise, please visit <http://www.abcam.com/abpromise> or contact our technical team.

Terms and conditions

- Guarantee only valid for products bought direct from Abcam or one of our authorized distributors