

Product datasheet

Anti-FAM161A antibody ab115810

[1 References](#) [1 Image](#)

Overview

Product name	Anti-FAM161A antibody
Description	Rabbit polyclonal to FAM161A
Host species	Rabbit
Tested applications	Suitable for: WB
Species reactivity	Reacts with: Human Predicted to work with: Rat, Rabbit, Horse, Guinea pig, Cow, Dog, Pig
Immunogen	Synthetic peptide corresponding to a region within internal sequence amino acids 120-169 (RKEWVPTITV PEPFQMMIRE QKKKEESMKS KSDIEMVHKA LKKQEEDPEY) of Human FAM161A, isoform 2. Run BLAST with ExPASy Run BLAST with NCBI
Positive control	Jurkat cell lysate.

Properties

Form	Liquid
Storage instructions	Shipped at 4°C. Store at +4°C short term (1-2 weeks). Upon delivery aliquot. Store at -20°C long term.
Storage buffer	Constituents: 98% PBS, 2% Sucrose
Purity	Immunogen affinity purified
Clonality	Polyclonal
Isotype	IgG

Applications

Our [Abpromise guarantee](#) covers the use of **ab115810** in the following tested applications.

The application notes include recommended starting dilutions; optimal dilutions/concentrations should be determined by the end user.

Application	Abreviews	Notes
WB		Use a concentration of 1 µg/ml. Predicted molecular weight: 65 kDa. Good results were obtained when blocked with 5% non-fat dry milk in 0.05% PBS-T.

Target

Tissue specificity

Isoform 1 and isoform 3 are widely expressed with highest levels in retina and testis, with isoform 1 being the most abundant in all tissues tested.

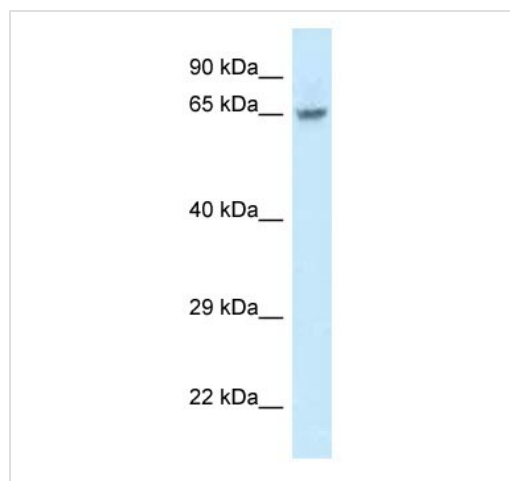
Involvement in disease

Defects in FAM161A are the cause of retinitis pigmentosa type 28 (RP28) [MIM:606068]. A retinal dystrophy belonging to the group of pigmentary retinopathies. Retinitis pigmentosa is characterized by retinal pigment deposits visible on fundus examination and primary loss of rod photoreceptor cells followed by secondary loss of cone photoreceptors. Patients typically have night vision blindness and loss of midperipheral visual field. As their condition progresses, they lose their far peripheral visual field and eventually central vision as well.

Sequence similarities

Belongs to the FAM161 family.

Images



Anti-FAM161A antibody (ab115810) at 1 μ g/ml + Jurkat cell lysate at 10 μ g

Predicted band size: 65 kDa

Gel concentration: 12%

Western blot - Anti-FAM161A antibody (ab115810)

Please note: All products are "FOR RESEARCH USE ONLY AND ARE NOT INTENDED FOR DIAGNOSTIC OR THERAPEUTIC USE"

Our Abpromise to you: Quality guaranteed and expert technical support

- Replacement or refund for products not performing as stated on the datasheet
- Valid for 12 months from date of delivery
- Response to your inquiry within 24 hours
- We provide support in Chinese, English, French, German, Japanese and Spanish
- Extensive multi-media technical resources to help you
- We investigate all quality concerns to ensure our products perform to the highest standards

If the product does not perform as described on this datasheet, we will offer a refund or replacement. For full details of the Abpromise, please visit <http://www.abcam.com/abpromise> or contact our technical team.

Terms and conditions

- Guarantee only valid for products bought direct from Abcam or one of our authorized distributors