


Product datasheet

Anti-Protein phosphatase 1 inhibitor subunit 2 antibody ab116047

1 Image

Overview

Product name	Anti-Protein phosphatase 1 inhibitor subunit 2 antibody
Description	Rabbit polyclonal to Protein phosphatase 1 inhibitor subunit 2
Host species	Rabbit
Tested applications	Suitable for: WB
Species reactivity	Reacts with: Human Predicted to work with: Mouse, Rat, Rabbit, Horse, Guinea pig, Cow, Cat, Dog 
Immunogen	Synthetic peptide corresponding to a region within N terminal amino acids 27-76 (ASAEQPRGNVDEELSKKSQKWDEMNILATYHPADKDYGLMKIDEPSTPYH) of Human Protein phosphatase 1 inhibitor subunit 2 (NP_006232). Run BLAST with Run BLAST with
Positive control	THP-1 cell lysate.

Properties

Form	Liquid
Storage instructions	Shipped at 4°C. Upon delivery aliquot and store at -20°C. Avoid repeated freeze / thaw cycles.
Storage buffer	Constituents: 2% Sucrose, 97% PBS
Purity	Immunogen affinity purified
Clonality	Polyclonal
Isotype	IgG

Applications

Our [Abpromise guarantee](#) covers the use of **ab116047** in the following tested applications.

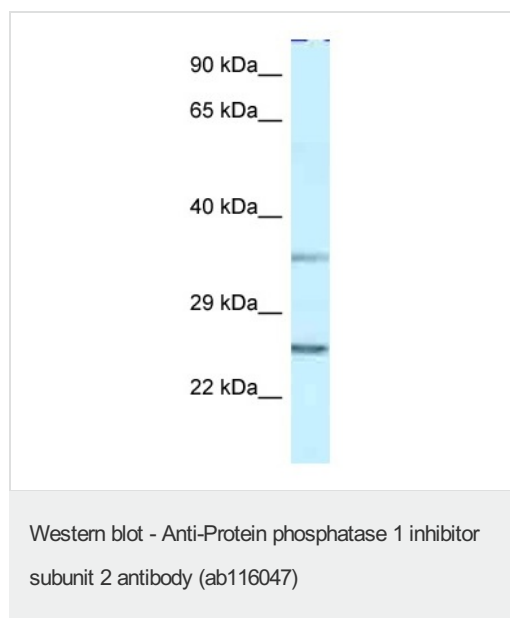
The application notes include recommended starting dilutions; optimal dilutions/concentrations should be determined by the end user.

Application	Abreviews	Notes
WB		Use a concentration of 1 µg/ml. Predicted molecular weight: 23 kDa. Good results were obtained when blocked with 5% non-fat dry milk in 0.05% PBS-T.

Target

Function	Inhibitor of protein-phosphatase 1.
Sequence similarities	Belongs to the protein phosphatase inhibitor 2 family.
Post-translational modifications	Phosphorylation on Thr-73 by GSK3 activates PP1 by dissociating the PP1-PPP1R2 complex (By similarity). Phosphorylation on Ser-44 by ATM activates PP1 by dissociating the PP1-PPP1R2 complex.

Images



Anti-Protein phosphatase 1 inhibitor subunit 2 antibody (ab116047) at 1 µg/ml + THP-1 cell lysate at 10 µg

Predicted band size: 23 kDa

Gel concentration: 12%

Please note: All products are "FOR RESEARCH USE ONLY AND ARE NOT INTENDED FOR DIAGNOSTIC OR THERAPEUTIC USE"

Our Abpromise to you: Quality guaranteed and expert technical support

- Replacement or refund for products not performing as stated on the datasheet
- Valid for 12 months from date of delivery
- Response to your inquiry within 24 hours
- We provide support in Chinese, English, French, German, Japanese and Spanish
- Extensive multi-media technical resources to help you
- We investigate all quality concerns to ensure our products perform to the highest standards

If the product does not perform as described on this datasheet, we will offer a refund or replacement. For full details of the Abpromise, please visit <http://www.abcam.com/abpromise> or contact our technical team.

Terms and conditions

- Guarantee only valid for products bought direct from Abcam or one of our authorized distributors