

Product datasheet

# Anti-Metabotropic Glutamate Receptor 6 antibody ab116555

1 Image

Overview

<b>Product name</b>	Anti-Metabotropic Glutamate Receptor 6 antibody
<b>Description</b>	Rabbit polyclonal to Metabotropic Glutamate Receptor 6
<b>Host species</b>	Rabbit
<b>Tested applications</b>	<b>Suitable for:</b> WB
<b>Species reactivity</b>	<b>Reacts with:</b> Human
<b>Immunogen</b>	Synthetic peptide conjugated to KLH, corresponding to a region within internal sequence amino acids 368-398 of Human Metabotropic Glutamate Receptor 6 (NP_000834.2)
<b>Positive control</b>	MDA-MB-435 cell lysate

Properties

<b>Form</b>	Liquid
<b>Storage instructions</b>	Shipped at 4°C. Store at 4°C (up to 6 months). Store at -20°C long term.
<b>Storage buffer</b>	Preservative: 0.09% Sodium azide Constituent: 99% PBS
<b>Purity</b>	Immunogen affinity purified
<b>Purification notes</b>	ab116555 was purified through a protein A column, followed by peptide affinity purification.
<b>Clonality</b>	Polyclonal
<b>Isotype</b>	IgG

Applications

Our [Abpromise guarantee](#) covers the use of **ab116555** in the following tested applications.

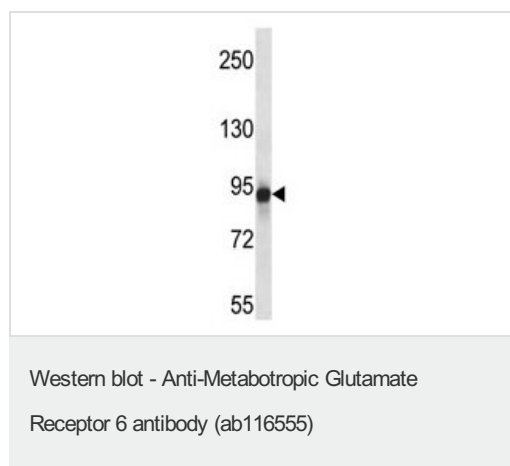
The application notes include recommended starting dilutions; optimal dilutions/concentrations should be determined by the end user.

Application	Abreviews	Notes
WB		1/100 - 1/500. Predicted molecular weight: 95 kDa.

## Target

<b>Function</b>	Receptor for glutamate. The activity of this receptor is mediated by a G-protein that inhibits adenylate cyclase activity.
<b>Involvement in disease</b>	Defects in GRM6 are the cause of congenital stationary night blindness type 1B (CSNB1B) [MIM:257270]. This disorder consists of a previously unrecognized, autosomal recessive form of congenital night blindness associated with a negative electroretinogram waveform. Patients are night blind from an early age, and when maximally dark-adapted, they could perceive lights only with an intensity equal to or slightly dimmer than that normally detected by the cone system. ERGs in response to single brief flashes of light have clearly detectable a-waves, which are derived from photoreceptors, and greatly reduced b-waves, which are derived from the second-order inner retinal neurons. ERGs in response to sawtooth flickering light indicate a markedly reduced ON response and a nearly normal OFF response. There is no subjective delay in the perception of suddenly appearing white vs black objects on a gray background.
<b>Sequence similarities</b>	Belongs to the G-protein coupled receptor 3 family.
<b>Cellular localization</b>	Cell membrane.

## Images



Anti-Metabotropic Glutamate Receptor 6 antibody (ab116555) at 1/100 dilution + MDA-MB-435 cell lysate at 35 µg

**Predicted band size:** 95 kDa

**Please note:** All products are "FOR RESEARCH USE ONLY AND ARE NOT INTENDED FOR DIAGNOSTIC OR THERAPEUTIC USE"

## Our Abpromise to you: Quality guaranteed and expert technical support

- Replacement or refund for products not performing as stated on the datasheet
- Valid for 12 months from date of delivery
- Response to your inquiry within 24 hours
- We provide support in Chinese, English, French, German, Japanese and Spanish
- Extensive multi-media technical resources to help you
- We investigate all quality concerns to ensure our products perform to the highest standards

If the product does not perform as described on this datasheet, we will offer a refund or replacement. For full details of the Abpromise, please visit <http://www.abcam.com/abpromise> or contact our technical team.

## Terms and conditions

---

- Guarantee only valid for products bought direct from Abcam or one of our authorized distributors