

Product datasheet

Anti-TAF1B antibody ab118067

2 Images

Overview

<b>Product name</b>	Anti-TAF1B antibody
<b>Description</b>	Rabbit polyclonal to TAF1B
<b>Host species</b>	Rabbit
<b>Tested applications</b>	<b>Suitable for:</b> WB, IP
<b>Species reactivity</b>	<b>Reacts with:</b> Human
<b>Immunogen</b>	Recombinant full length protein, corresponding to amino acids 1-588 of Human TAF1B (AAH18137.1).
<b>Positive control</b>	TAF1B transfected 293T cell lysate.

Properties

<b>Form</b>	Liquid
<b>Storage instructions</b>	Shipped at 4°C. Upon delivery aliquot and store at -20°C or -80°C. Avoid repeated freeze / thaw cycles.
<b>Storage buffer</b>	Constituent: 99% Whole serum
<b>Purity</b>	Whole antiserum
<b>Clonality</b>	Polyclonal
<b>Isotype</b>	IgG

Applications

Our [Abpromise guarantee](#) covers the use of **ab118067** in the following tested applications.

The application notes include recommended starting dilutions; optimal dilutions/concentrations should be determined by the end user.

Application	Abreviews	Notes
WB		1/1000. Predicted molecular weight: 69 kDa.
IP		Use at an assay dependent dilution.

## Target

### Function

Component of the transcription factor SL1/TIF-IB complex, which is involved in the assembly of the PIC (preinitiation complex) during RNA polymerase I-dependent transcription. The rate of PIC formation probably is primarily dependent on the rate of association of SL1/TIF-IB with the rDNA promoter. SL1/TIF-IB is involved in stabilization of nucleolar transcription factor 1/UBTF on rDNA. Formation of SL1/TIF-IB excludes the association of TBP with TFIID subunits.

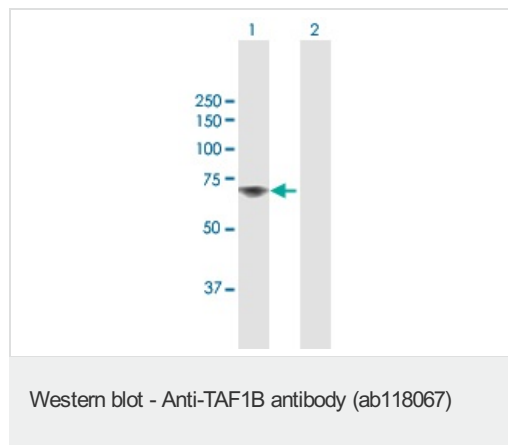
### Sequence similarities

Belongs to the TAF1 family.

### Cellular localization

Nucleus.

## Images

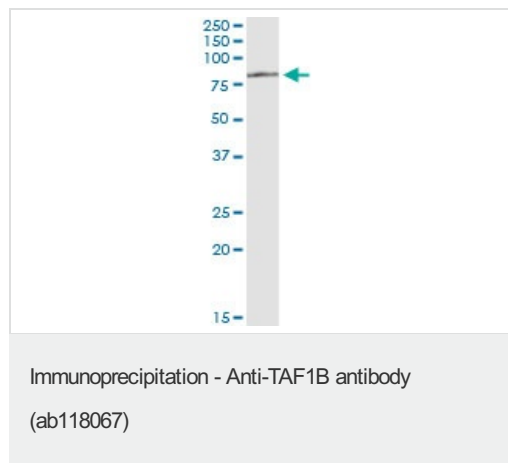


**All lanes :** Anti-TAF1B antibody (ab118067)  
at 1/1000 dilution

**Lane 1 :** 293T cell lysate, transfected with  
TAF1B

**Lane 2 :** 293T cell lysate, non-transfected

**Predicted band size:** 69 kDa



Staining of TAF1B immunoprecipitated from  
transfected lysate using ab118067 and  
Protein A Magnetic Bead, and immunoblotted  
with anti-TAF1B mouse polyclonal antibody.

**Please note:** All products are "FOR RESEARCH USE ONLY AND ARE NOT INTENDED FOR DIAGNOSTIC OR THERAPEUTIC USE"

## Our Abpromise to you: Quality guaranteed and expert technical support

- Replacement or refund for products not performing as stated on the datasheet
- Valid for 12 months from date of delivery
- Response to your inquiry within 24 hours
- We provide support in Chinese, English, French, German, Japanese and Spanish
- Extensive multi-media technical resources to help you

- We investigate all quality concerns to ensure our products perform to the highest standards

If the product does not perform as described on this datasheet, we will offer a refund or replacement. For full details of the Abpromise, please visit <http://www.abcam.com/abpromise> or contact our technical team.

### **Terms and conditions**

---

- Guarantee only valid for products bought direct from Abcam or one of our authorized distributors