


Product datasheet

Anti-PRAP1 antibody ab118186

[1 References](#) [1 Image](#)

Overview

Product name	Anti-PRAP1 antibody
Description	Rabbit polyclonal to PRAP1
Host species	Rabbit
Tested applications	Suitable for: WB
Species reactivity	Reacts with: Human Predicted to work with: Rat, Horse, Cow, Dog, Pig 
Immunogen	Synthetic peptide corresponding to a region within C terminal amino acids 102-151 (VLSPEPDHDS LYHPPPEEDQ GEERPRLWVM PNHQVLLGPE EDQDHIYHPQ) of Human PRAP1 (Q96NZ9). Run BLAST with ExPASy Run BLAST with NCBI
Positive control	THP-1 cell lysates.

Properties

Form	Liquid
Storage instructions	Shipped at 4°C. Upon delivery aliquot and store at -20°C. Avoid repeated freeze / thaw cycles.
Storage buffer	Constituents: 97% PBS, 2% Sucrose
Purity	Immunogen affinity purified
Clonality	Polyclonal
Isotype	IgG

Applications

Our [Abpromise guarantee](#) covers the use of **ab118186** in the following tested applications.

The application notes include recommended starting dilutions; optimal dilutions/concentrations should be determined by the end user.

Application	Abreviews	Notes
WB		Use a concentration of 1 µg/ml. Predicted molecular weight: 17 kDa. Good results were obtained when blocked with 5% non-fat dry milk in 0.05% PBS-T.

Target

Function

May play an important role in maintaining normal growth homeostasis in epithelial cells.

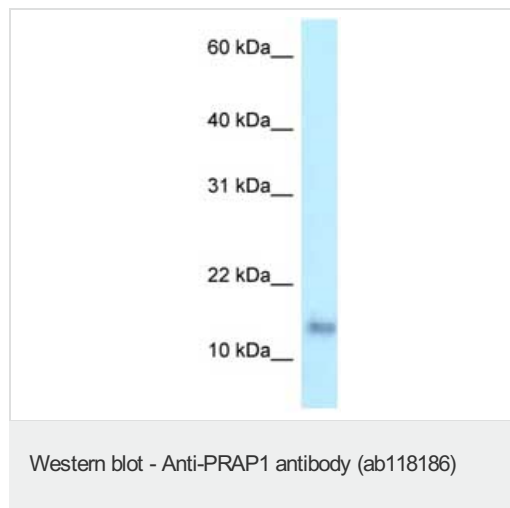
Tissue specificity

Abundantly expressed in the epithelial cells of the liver, kidney, gastrointestinal tract and cervix. Significantly down-regulated in hepatocellular carcinoma and right colon adenocarcinoma compared with the respective adjacent normal tissues.

Cellular localization

Secreted.

Images



Anti-PRAP1 antibody (ab118186) at 1 µg/ml +
THP-1 cell lysate at 10 µg

Predicted band size: 17 kDa

Please note: All products are "FOR RESEARCH USE ONLY AND ARE NOT INTENDED FOR DIAGNOSTIC OR THERAPEUTIC USE"

Our Abpromise to you: Quality guaranteed and expert technical support

- Replacement or refund for products not performing as stated on the datasheet
- Valid for 12 months from date of delivery
- Response to your inquiry within 24 hours
- We provide support in Chinese, English, French, German, Japanese and Spanish
- Extensive multi-media technical resources to help you
- We investigate all quality concerns to ensure our products perform to the highest standards

If the product does not perform as described on this datasheet, we will offer a refund or replacement. For full details of the Abpromise, please visit <http://www.abcam.com/abpromise> or contact our technical team.

Terms and conditions

- Guarantee only valid for products bought direct from Abcam or one of our authorized distributors