

Product datasheet

Anti-Calumenin antibody ab118308

1 References 1 Image

Overview

Product name	Anti-Calumenin antibody
Description	Rabbit polyclonal to Calumenin
Host species	Rabbit
Tested applications	Suitable for: WB
Species reactivity	Reacts with: Human Predicted to work with: Mouse, Rat, Rabbit, Horse, Guinea pig, Cow, Cat, Dog, Zebrafish
Immunogen	Synthetic peptide corresponding to a region within C terminal amino acids 261-310 (SDYDHAEAEA RHLVYESDQN KDGKLTKEEI VDKYDLFVGS QATDFGEALV) of Human Calumenin (NP_001210). Run BLAST with ExPASy Run BLAST with NCBI
Positive control	U937 cell lysate

Properties

Form	Liquid
Storage instructions	Shipped at 4°C. Upon delivery aliquot and store at -20°C. Avoid repeated freeze / thaw cycles.
Storage buffer	Constituents: 97% PBS, 2% Sucrose
Purity	Immunogen affinity purified
Clonality	Polyclonal
Isotype	IgG

Applications

Our [Abpromise guarantee](#) covers the use of **ab118308** in the following tested applications.

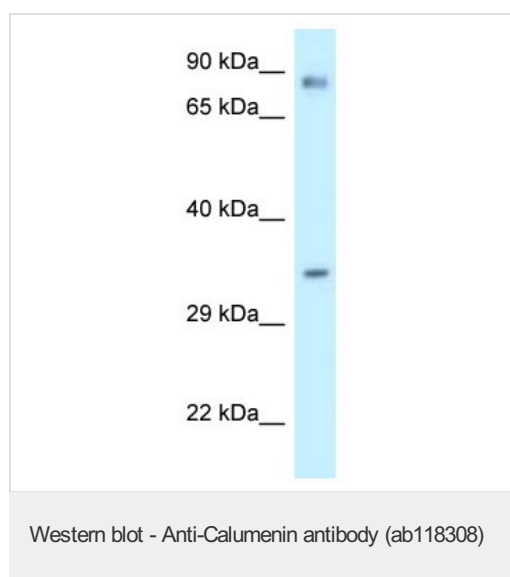
The application notes include recommended starting dilutions; optimal dilutions/concentrations should be determined by the end user.

Application	Abreviews	Notes
WB		Use a concentration of 1 µg/ml. Predicted molecular weight: 37 kDa. Good results were obtained when blocked with 5% non-fat dry milk in 0.05% PBS-T.

Target

Function	Involved in regulation of vitamin K-dependent carboxylation of multiple amino-terminal glutamate residues. Seems to inhibit gamma-carboxylase GGCX. Binds 7 calcium ions with a low affinity.
Tissue specificity	Ubiquitously expressed. Expressed at high levels in heart, placenta and skeletal muscle, at lower levels in lung, kidney and pancreas and at very low levels in brain and liver.
Sequence similarities	Belongs to the CREC family. Contains 6 EF-hand domains.
Cellular localization	Endoplasmic reticulum lumen. Secreted. Melanosome. Sarcoplasmic reticulum lumen. Identified by mass spectrometry in melanosome fractions from stage I to stage IV.

Images



Anti-Calumenin antibody (ab118308) at 1 μ g/ml + U937 cell lysate at 10 μ g

Predicted band size: 37 kDa

Gel concentration: 12%

Please note: All products are "FOR RESEARCH USE ONLY AND ARE NOT INTENDED FOR DIAGNOSTIC OR THERAPEUTIC USE"

Our Abpromise to you: Quality guaranteed and expert technical support

- Replacement or refund for products not performing as stated on the datasheet
- Valid for 12 months from date of delivery
- Response to your inquiry within 24 hours
- We provide support in Chinese, English, French, German, Japanese and Spanish
- Extensive multi-media technical resources to help you
- We investigate all quality concerns to ensure our products perform to the highest standards

If the product does not perform as described on this datasheet, we will offer a refund or replacement. For full details of the Abpromise, please visit <http://www.abcam.com/abpromise> or contact our technical team.

Terms and conditions

- Guarantee only valid for products bought direct from Abcam or one of our authorized distributors