

## Product datasheet

# Anti-XPR1 antibody ab118315

[2 Images](#)

### Overview

<b>Product name</b>	Anti-XPR1 antibody
<b>Description</b>	Mouse monoclonal to XPR1
<b>Host species</b>	Mouse
<b>Tested applications</b>	<b>Suitable for:</b> WB
<b>Species reactivity</b>	<b>Reacts with:</b> Human <b>Predicted to work with:</b> Mouse, Rabbit, Cat, Dog, Chinese hamster
<b>Immunogen</b>	Recombinant fragment: PLEVFRRFVW NFFRLENEHL NNCGEFRAVR DISVAPLNAD DQTLLEQMMD QDDGVRNRQK NRSWKYNQSI SLRRPRLASQ SKARDTKVLI EDTDDEAN, corresponding to amino acids 598 - 696 of Human XPR1 (NP_004727) with a proprietary tag. <a href="#">Run BLAST with ExPASy</a> <a href="#">Run BLAST with NCBI</a>
<b>Positive control</b>	Human pancreas lysate

### Properties

<b>Form</b>	Liquid
<b>Storage instructions</b>	Shipped at 4°C. Upon delivery aliquot. Store at -20°C or -80°C. Avoid freeze / thaw cycle.
<b>Storage buffer</b>	pH: 7.20 Constituent: 99% PBS
<b>Purity</b>	Protein A purified
<b>Clonality</b>	Monoclonal
<b>Isotype</b>	IgG1
<b>Light chain type</b>	kappa

### Applications

Our [Abpromise guarantee](#) covers the use of **ab118315** in the following tested applications.

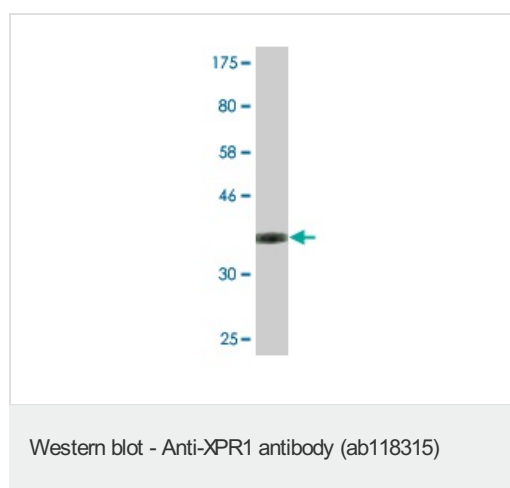
The application notes include recommended starting dilutions; optimal dilutions/concentrations should be determined by the end user.

Application	Abreviews	Notes
WB		Use a concentration of 1 - 5 µg/ml. Predicted molecular weight: 82 kDa.

## Target

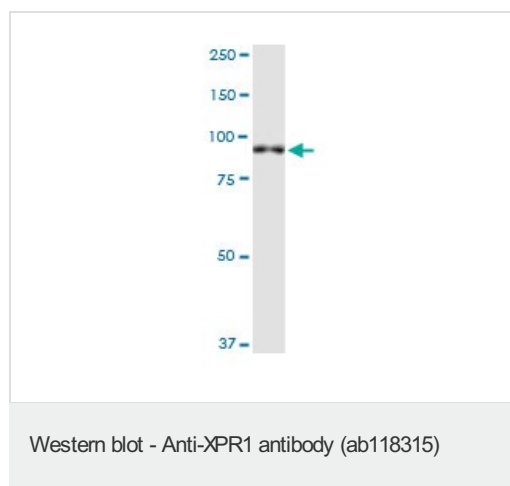
<b>Function</b>	May function in G-protein coupled signal transduction (By similarity). Potential receptor for xenotropic and polytropic murine leukemia retroviruses.
<b>Tissue specificity</b>	Widely expressed. Detected in spleen, lymph node, thymus, leukocytes, bone marrow, heart, kidney, pancreas and skeletal muscle.
<b>Sequence similarities</b>	Belongs to the SYG1 (TC 2.A.94) family. Contains 1 EXS domain. Contains 1 SPX domain.
<b>Developmental stage</b>	Expressed in fetal liver.
<b>Cellular localization</b>	Cell membrane.

## Images



Anti-XPR1 antibody (ab118315) at 1 µg/ml +  
Recombinant XPR1 protein (the immunogen)  
with a proprietary tag. at 0.2 µg

**Predicted band size:** 82 kDa



Anti-XPR1 antibody (ab118315) at 5 µg/ml +  
Human pancreas lysate at 50 µg

**Predicted band size:** 82 kDa

### **Our Abpromise to you: Quality guaranteed and expert technical support**

---

- Replacement or refund for products not performing as stated on the datasheet
- Valid for 12 months from date of delivery
- Response to your inquiry within 24 hours
  
- We provide support in Chinese, English, French, German, Japanese and Spanish
- Extensive multi-media technical resources to help you
- We investigate all quality concerns to ensure our products perform to the highest standards

If the product does not perform as described on this datasheet, we will offer a refund or replacement. For full details of the Abpromise, please visit <http://www.abcam.com/abpromise> or contact our technical team.

### **Terms and conditions**

---

- Guarantee only valid for products bought direct from Abcam or one of our authorized distributors