

Product datasheet

Anti-PACSIN2 antibody ab118330

[1 References](#) [3 Images](#)

Overview

Product name	Anti-PACSIN2 antibody
Description	Mouse monoclonal to PACSIN2
Host species	Mouse
Tested applications	Suitable for: WB, IHC-P, Sandwich ELISA
Species reactivity	Reacts with: Human
Immunogen	Recombinant fragment, corresponding to amino acids 368-429 of Human PACSIN2 (NP_009160) with a proprietary tag.
Positive control	Recombinant Protein. Human kidney tissue.

Properties

Form	Liquid
Storage instructions	Shipped at 4°C. Upon delivery aliquot and store at -20°C or -80°C. Avoid repeated freeze / thaw cycles.
Storage buffer	pH: 7.20 Constituent: 99% PBS
Purity	Protein A purified
Clonality	Monoclonal
Isotype	IgG2a
Light chain type	kappa

Applications

Our [Abpromise guarantee](#) covers the use of **ab118330** in the following tested applications.

The application notes include recommended starting dilutions; optimal dilutions/concentrations should be determined by the end user.

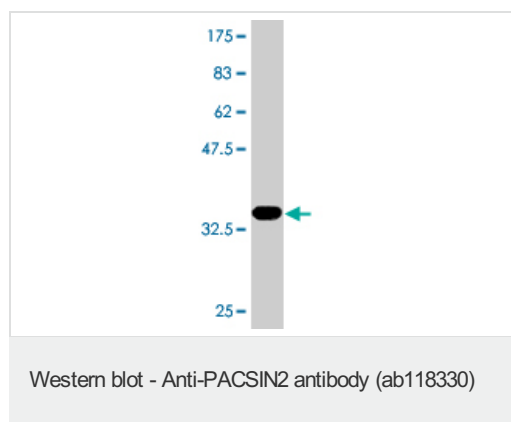
Application	Abreviews	Notes
WB		Use a concentration of 1 - 5 µg/ml. Predicted molecular weight: 56 kDa. This antibody has only been tested in WB against the recombinant fragment used as immunogen. We have no data on the detection of endogenous protein.

Application	Abreviews	Notes
IHC-P		Use a concentration of 3 µg/ml. Perform heat mediated antigen retrieval with citrate buffer pH 6 before commencing with IHC staining protocol.
Sandwich ELISA		Use a concentration of 10 µg/ml. as capture antibody.

Target

Function	May play a role in vesicle formation and transport.
Tissue specificity	Ubiquitously expressed.
Sequence similarities	Belongs to the PACSIN family. Contains 1 FCH domain. Contains 1 SH3 domain.
Post-translational modifications	Phosphorylated by casein kinase 2 (CK2) and protein kinase C (PKC).
Cellular localization	Cytoplasmic vesicle. Vesicle-like cytoplasmic distribution.

Images

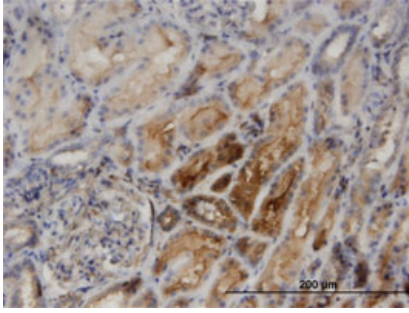


Anti-PACSIN2 antibody (ab118330) at 5 µg/ml + Recombinant immunogen at 0.2 µg

Developed using the ECL technique.

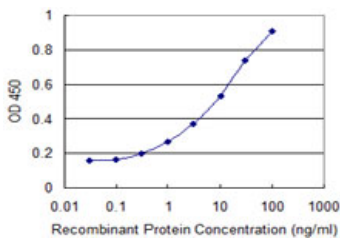
Predicted band size: 56 kDa

Western blot against tagged recombinant immunogen using ab118330 antibody at 5µg/ml dilution. Predicted band size of immunogen is 33 kDa.



ab118330 at 3 $\mu\text{g/ml}$ staining PACSIN2 in Formalin-Fixed, Paraffin-Embedded Human Kidney tissue by Immunohistochemistry.

Immunohistochemistry (Formalin/PFA-fixed paraffin-embedded sections) - Anti-PACSIN2 antibody (ab118330)



ab118330 at 10 $\mu\text{g/ml}$ as a capture antibody. The detection limit for recombinant tagged PACSIN2 is 0.1 ng/ml.

Sandwich ELISA - Anti-PACSIN2 antibody (ab118330)

Please note: All products are "FOR RESEARCH USE ONLY AND ARE NOT INTENDED FOR DIAGNOSTIC OR THERAPEUTIC USE"

Our Abpromise to you: Quality guaranteed and expert technical support

- Replacement or refund for products not performing as stated on the datasheet
- Valid for 12 months from date of delivery
- Response to your inquiry within 24 hours
- We provide support in Chinese, English, French, German, Japanese and Spanish
- Extensive multi-media technical resources to help you
- We investigate all quality concerns to ensure our products perform to the highest standards

If the product does not perform as described on this datasheet, we will offer a refund or replacement. For full details of the Abpromise, please visit <http://www.abcam.com/abpromise> or contact our technical team.

Terms and conditions

- Guarantee only valid for products bought direct from Abcam or one of our authorized distributors