

Product datasheet

Anti-Uba6 antibody ab118344

[3 Images](#)

Overview

Product name	Anti-Uba6 antibody
Description	Mouse monoclonal to Uba6
Host species	Mouse
Tested applications	Suitable for: WB, IHC-P, Sandwich ELISA
Species reactivity	Reacts with: Human, Recombinant fragment
Immunogen	Recombinant fragment corresponding to amino acids 962-1052 of Human Uba6 with proprietary 26 kDa tag (NP_060697). Run BLAST with ExPASy Run BLAST with NCBI
Positive control	Human testis tissue

Properties

Form	Liquid
Storage instructions	Shipped at 4°C. Upon delivery aliquot and store at -20°C or -80°C. Avoid repeated freeze / thaw cycles.
Storage buffer	pH: 7.20 Constituent: 99% PBS
Purity	Protein A purified
Clonality	Monoclonal
Isotype	IgG2b
Light chain type	kappa

Applications

Our [Abpromise guarantee](#) covers the use of **ab118344** in the following tested applications.

The application notes include recommended starting dilutions; optimal dilutions/concentrations should be determined by the end user.

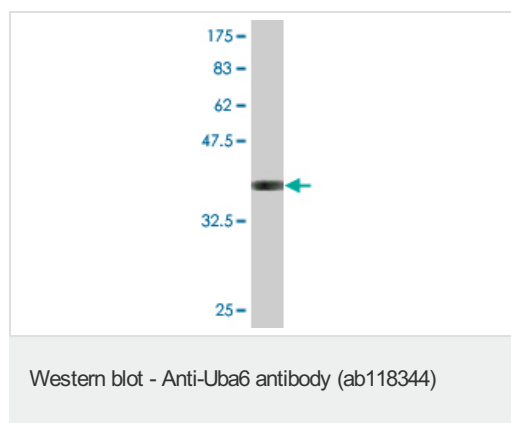
Application	Abreviews	Notes
-------------	-----------	-------

Application	Abreviews	Notes
WB		Use a concentration of 1 - 5 µg/ml. Detects a band of approximately 36.01 kDa (predicted molecular weight: 118 kDa). This antibody has only been tested in WB against the recombinant fragment used as immunogen. We have no data on the detection of endogenous protein
IHC-P		Use a concentration of 3 µg/ml. Perform heat mediated antigen retrieval with citrate buffer pH 6 before commencing with IHC staining protocol.
Sandwich ELISA		Use a concentration of 10 µg/ml.

Target

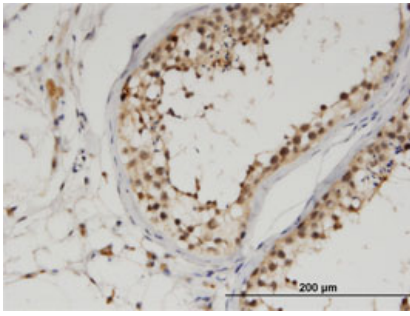
Function	Activates ubiquitin by first adenylating its C-terminal glycine residue with ATP, and thereafter linking this residue to the side chain of a cysteine residue in E1, yielding an ubiquitin-E1 thioester and free AMP. Specific for ubiquitin, does not activate ubiquitin-like peptides. Differs from UBE1 in its specificity for substrate E2 charging. Does not charge cell cycle E2s, such as CDC34. Essential for embryonic development. Required for UBD/FAT10 conjugation. Isoform 2 may play a key role in ubiquitin system and may influence spermatogenesis and male fertility.
Tissue specificity	Widely expressed. Isoform 2 is predominantly expressed in testis with higher expression in adult testis than in fetal testis.
Pathway	Protein modification; protein ubiquitination.
Sequence similarities	Belongs to the ubiquitin-activating E1 family.

Images



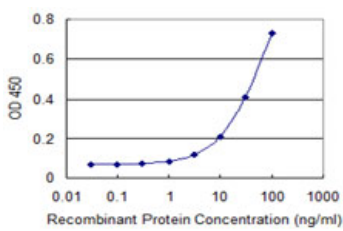
Anti-Uba6 antibody (ab118344) at 5 µg/ml +
Immunogen peptide at 0.2 µg

Predicted band size: 118 kDa



ab118344, at 3 $\mu\text{g/ml}$ staining Uba6 in formalin-fixed, paraffin-embedded Human testis by Immunohistochemistry.

Immunohistochemistry (Formalin/PFA-fixed paraffin-embedded sections) - Anti-Uba6 antibody (ab118344)



Detection limit for ab118344 is 1 ng/ml as a capture antibody.

Sandwich ELISA - Anti-Uba6 antibody (ab118344)

Please note: All products are "FOR RESEARCH USE ONLY AND ARE NOT INTENDED FOR DIAGNOSTIC OR THERAPEUTIC USE"

Our Abpromise to you: Quality guaranteed and expert technical support

- Replacement or refund for products not performing as stated on the datasheet
- Valid for 12 months from date of delivery
- Response to your inquiry within 24 hours
- We provide support in Chinese, English, French, German, Japanese and Spanish
- Extensive multi-media technical resources to help you
- We investigate all quality concerns to ensure our products perform to the highest standards

If the product does not perform as described on this datasheet, we will offer a refund or replacement. For full details of the Abpromise, please visit <http://www.abcam.com/abpromise> or contact our technical team.

Terms and conditions

- Guarantee only valid for products bought direct from Abcam or one of our authorized distributors