

Product datasheet

Anti-eRF3B/GSPT2 antibody [2G9] ab119049

5 Images

Overview

| | |
|----------------------------|--|
| Product name | Anti-eRF3B/GSPT2 antibody [2G9] |
| Description | Mouse monoclonal [2G9] to eRF3B/GSPT2 |
| Host species | Mouse |
| Tested applications | Suitable for: WB, Flow Cyt, ICC/IF |
| Species reactivity | Reacts with: Human |
| Immunogen | Recombinant full length Human eRF3B/GSPT2 produced in HEK293T cells (NP_060564). |
| Positive control | HEK293T cell lysate transfected with pCMV6-ENTRY eRF3B/GSPT2 cDNA; COS7 cells transiently transfected by pCMV6-ENTRY eRF3B/GSPT2; HEK293T cells transfected with pCMV6-ENTRY eRF3B/GSPT2 overexpress plasmid; HeLa and Jurkat cells. |
| General notes | Dilute in PBS (pH7.3) before use. Stable for 12 months from date of receipt. |

Properties

| | |
|-----------------------------|--|
| Form | Liquid |
| Storage instructions | Shipped at 4°C. Upon delivery aliquot and store at -20°C. Avoid repeated freeze / thaw cycles. |
| Storage buffer | pH: 7.30 Preservative: 0.02% Sodium azide Constituents: 1% BSA, 50% Glycerol, 48% PBS |
| Purity | Protein G purified |
| Purification notes | ab119049 is purified from Mouse ascites fluid by affinity chromatography. |
| Clonality | Monoclonal |
| Clone number | 2G9 |
| Isotype | IgG1 |

Applications

Our [Abpromise guarantee](#) covers the use of **ab119049** in the following tested applications.

The application notes include recommended starting dilutions; optimal dilutions/concentrations should be determined by the end user.

| Application | Abreviews | Notes |
|-------------|-----------|---|
| WB | | 1/2000. Predicted molecular weight: 69 kDa. |
| Flow Cyt | | 1/100. ab170190 - Mouse monoclonal IgG1, is suitable for use as an isotype control with this antibody. |
| ICC/IF | | 1/100. |

Target

Function

Involved in translation termination in response to the termination codons UAA, UAG and UGA. May play a role as a potent stimulator of the release factor activity of ETF1. Exhibits GTPase activity, which is ribosome- and ETF1-dependent. May play a role in cell cycle progression. Component of the transient SURF complex which recruits UPF1 to stalled ribosomes in the context of nonsense-mediated decay (NMD) of mRNAs containing premature stop codons.

Tissue specificity

Highly expressed in IUCC stage II colorectal cancer (CRC).

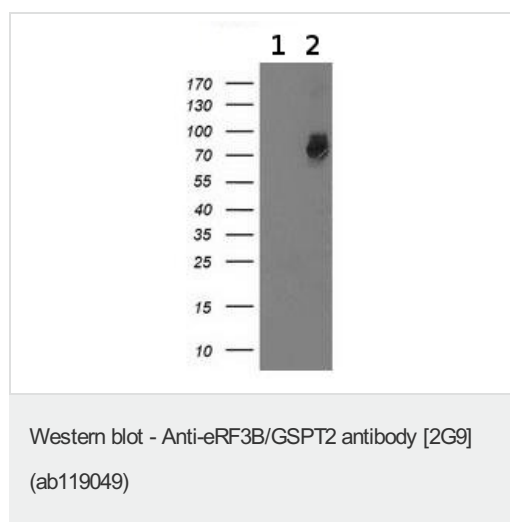
Sequence similarities

Belongs to the GTP-binding elongation factor family. ERF3 subfamily.

Cellular localization

Cytoplasm.

Images



All lanes : Anti-eRF3B/GSPT2 antibody [2G9] (ab119049) at 1/2000 dilution

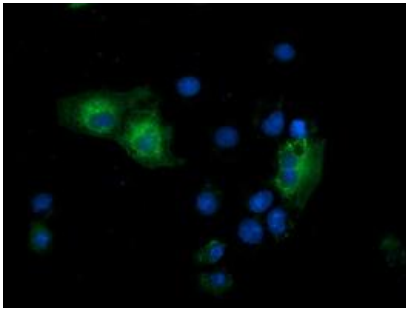
Lane 1 : HEK293T lysate transfected with pCMV6-ENTRY control cDNA

Lane 2 : HEK293T lysate transfected with pCMV6-ENTRY eRF3B/GSPT2 cDNA

Lysates/proteins at 5 µg per lane.

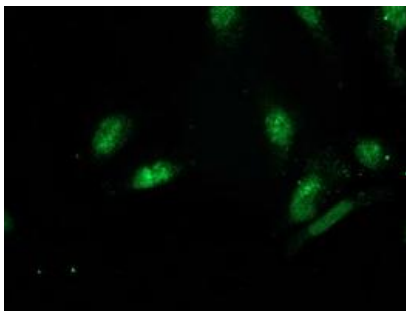
Predicted band size: 69 kDa

HEK293T cell lysates were generated from transient transfection of the cDNA clone (RC206259)



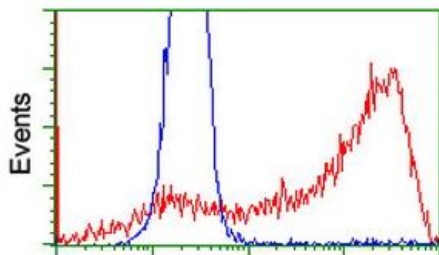
ab119049 at 1/100 dilution staining eRF3B/GSPT2 in COS7 cells transiently transfected with pCMV6-ENTRY eRF3B/GSPT2 by Immunofluorescence.

Immunocytochemistry/ Immunofluorescence - Anti-eRF3B/GSPT2 antibody [2G9] (ab119049)



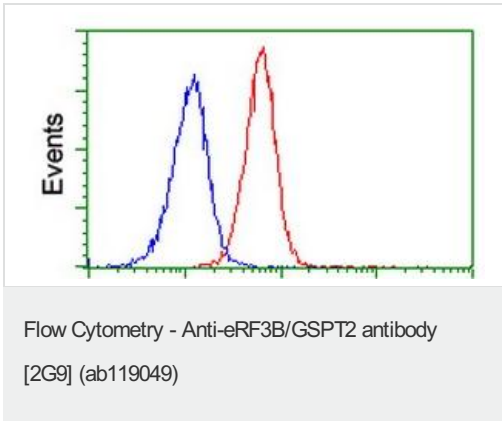
ab119049 at 1/100 dilution staining eRF3B/GSPT2 in HeLa cells by Immunofluorescence.

Immunocytochemistry/ Immunofluorescence - Anti-eRF3B/GSPT2 antibody [2G9] (ab119049)



ab119049 at 1/100 dilution staining eRF3B/GSPT2 in HEK293T cells transfected with pCMV6-ENTRY eRF3B/GSPT2 overexpress plasmid(Red) or empty vector control plasmid(Blue) by flow cytometry.

Flow Cytometry - Anti-eRF3B/GSPT2 antibody [2G9] (ab119049)



ab119049 at 1/100 dilution staining eRF3B/GSPT2 in Jurkat cells by Flow cytometry (Red) compared to a nonspecific negative control antibody (Blue).

Please note: All products are "FOR RESEARCH USE ONLY AND ARE NOT INTENDED FOR DIAGNOSTIC OR THERAPEUTIC USE"

Our Abpromise to you: Quality guaranteed and expert technical support

- Replacement or refund for products not performing as stated on the datasheet
- Valid for 12 months from date of delivery
- Response to your inquiry within 24 hours
- We provide support in Chinese, English, French, German, Japanese and Spanish
- Extensive multi-media technical resources to help you
- We investigate all quality concerns to ensure our products perform to the highest standards

If the product does not perform as described on this datasheet, we will offer a refund or replacement. For full details of the Abpromise, please visit <http://www.abcam.com/abpromise> or contact our technical team.

Terms and conditions

- Guarantee only valid for products bought direct from Abcam or one of our authorized distributors