

Product datasheet

Anti-RASSF1 antibody [8E4] ab119423

13 Images

Overview

Product name	Anti-RASSF1 antibody [8E4]
Description	Mouse monoclonal [8E4] to RASSF1
Tested applications	Suitable for: WB, IHC-P, Flow Cyt, ICC/IF
Species reactivity	Reacts with: Human
Immunogen	Recombinant full length protein, corresponding to amino acids 1-340 of Human RASSF1 produced in E.coli (NP_009113).
Positive control	HEK293T cell lysate transfected with pCMV6-ENTRY RASSF1 cDNA; Human breast, lung carcinoma, pancreas, thyroid carcinoma, endometrium adenocarcinoma, prostate, prostate carcinoma, lymphoma, and tonsil tissues; COS7 cells transiently transfected with pCMV6-ENTRY RASSF1; Jurkat cells.
General notes	Dilute in PBS (pH7.3) before use. Stable for 12 months from date of receipt.

Properties

Form	Liquid
Storage instructions	Shipped at 4°C. Upon delivery aliquot and store at -20°C. Avoid repeated freeze / thaw cycles.
Storage buffer	pH: 7.30 Preservative: 0.02% Sodium azide Constituents: 48% PBS, 50% Glycerol, 1% BSA
Purity	Protein G purified
Purification notes	ab119423 is purified from Mouse ascites fluid by affinity chromatography.
Clonality	Monoclonal
Clone number	8E4
Isotype	IgG1

Applications

Our [Abpromise guarantee](#) covers the use of **ab119423** in the following tested applications.

The application notes include recommended starting dilutions; optimal dilutions/concentrations should be determined by the end user.

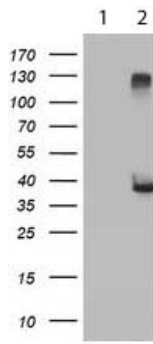
Application	Abreviews	Notes
-------------	-----------	-------

WB	1/2000. Predicted molecular weight: 39 kDa.
IHC-P	1/150.
Flow Cyt	1/100. ab170190 -Mouse monoclonal IgG1, is suitable for use as an isotype control with this antibody.
ICC/IF	1/100.

Target

Function	Potential tumor suppressor. Required for death receptor-dependent apoptosis. Mediates activation of STK4 during Fas-induced apoptosis. When associated with MOAP1, promotes BAX conformational change and translocation to mitochondrial membranes in response to TNF and TNFSF10 stimulation. Isoform A interacts with CDC20, an activator of the anaphase-promoting complex, APC, resulting in the inhibition of APC activity and mitotic progression. Inhibits proliferation by negatively regulating cell cycle progression at the level of G1/S-phase transition by regulating accumulation of cyclin D1 protein. Isoform C has been shown not to perform these roles, no function has been identified for this isoform. Isoform A disrupts interactions among MDM2, DAXX and USP7, thus contributing to the efficient activation of TP53 by promoting MDM2 self-ubiquitination in cell-cycle checkpoint control in response to DNA damage.
Tissue specificity	Isoform A and isoform C are ubiquitously expressed in all tissues tested, however isoform A is absent in many corresponding cancer cell lines. Isoform B is mainly expressed in hematopoietic cells.
Sequence similarities	Contains 1 phorbol-ester/DAG-type zinc finger. Contains 1 Ras-associating domain. Contains 1 SARA domain.
Cellular localization	Nucleus. Predominantly nuclear and Cytoplasm > cytoskeleton. Cytoplasm > cytoskeleton > centrosome. Cytoplasm > cytoskeleton > spindle. Cytoplasm > cytoskeleton > spindle pole. Nucleus. Localizes to cytoplasmic microtubules during interphase, to bipolar centrosomes associated with microtubules during prophase, to spindle fibers and spindle poles at metaphase and anaphase, to the midzone during early telophase, and to the midbody in late telophase in cells. Colocalizes with MDM2 in the nucleus.

Anti-RASSF1 antibody [8E4] images



Western blot - Anti-RASSF1 antibody [8E4]
(ab119423)

All lanes : Anti-RASSF1 antibody [8E4]
(ab119423) at 1/2000 dilution

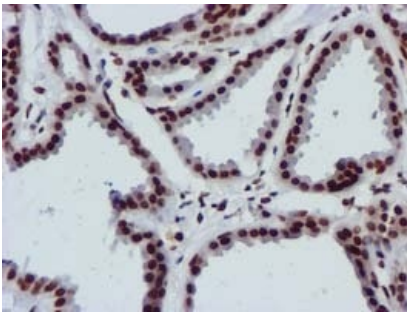
Lane 1 : HEK293T cell lysate transfected with
pCMV6-ENTRY control cDNA

Lane 2 : HEK293T cell lysate transfected with
pCMV6-ENTRY RASSF1 cDNA

Lysates/proteins at 5 µg per lane.

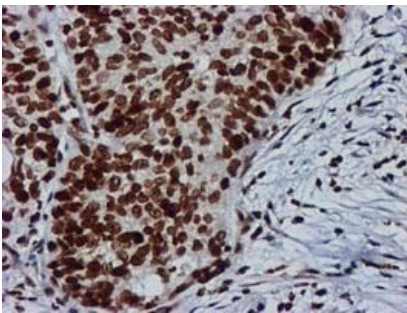
Predicted band size : 39 kDa

HEK293T cell lysates were generated from
transient transfection of the cDNA clone
(RC203844)



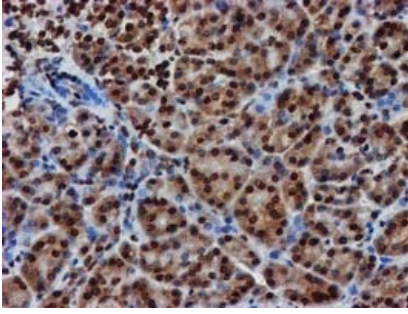
Immunohistochemistry (Formalin/PFA-fixed paraffin-
embedded sections) - Anti-RASSF1 antibody [8E4]
(ab119423)

ab119423 at 1/150 dilution staining RASSF1
in Paraffin-embedded Human Breast tissue by
Immunohistochemistry.



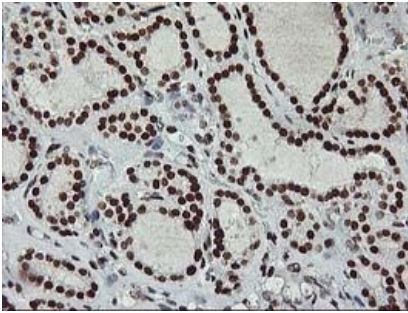
Immunohistochemistry (Formalin/PFA-fixed paraffin-
embedded sections) - Anti-RASSF1 antibody [8E4]
(ab119423)

ab119423 at 1/150 dilution staining RASSF1
in Paraffin-embedded Human Lung carcinoma
tissue by Immunohistochemistry.



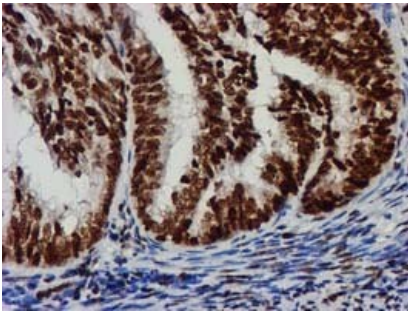
ab119423 at 1/150 dilution staining RASSF1
in Paraffin-embedded Human Pancreas tissue
by Immunohistochemistry.

Immunohistochemistry (Formalin/PFA-fixed paraffin-
embedded sections) - Anti-RASSF1 antibody [8E4]
(ab119423)



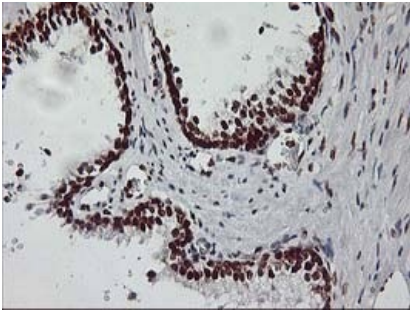
ab119423 at 1/150 dilution staining RASSF1
in Paraffin-embedded Human Thyroid
carcinoma tissue by Immunohistochemistry.

Immunohistochemistry (Formalin/PFA-fixed paraffin-
embedded sections) - Anti-RASSF1 antibody [8E4]
(ab119423)



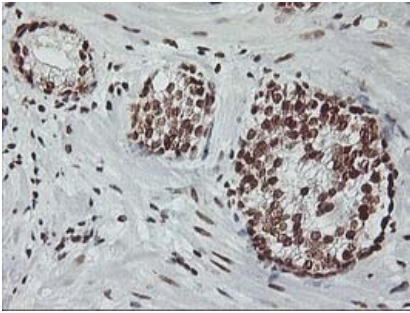
ab119423 at 1/150 dilution staining RASSF1
in Paraffin-embedded Human endometrium
adenocarcinoma tissue by
Immunohistochemistry.

Immunohistochemistry (Formalin/PFA-fixed paraffin-
embedded sections) - Anti-RASSF1 antibody [8E4]
(ab119423)



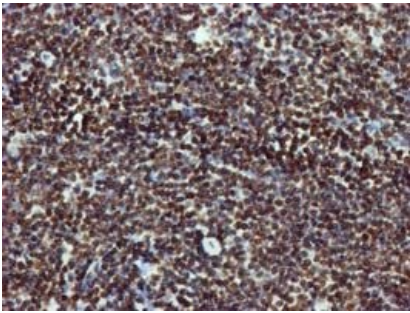
ab119423 at 1/150 dilution staining RASSF1 in Paraffin-embedded Human Prostate tissue by Immunohistochemistry.

Immunohistochemistry (Formalin/PFA-fixed paraffin-embedded sections) - Anti-RASSF1 antibody [8E4] (ab119423)



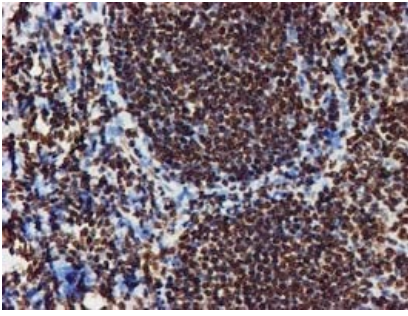
ab119423 at 1/150 dilution staining RASSF1 in Paraffin-embedded Human Prostate carcinoma tissue by Immunohistochemistry.

Immunohistochemistry (Formalin/PFA-fixed paraffin-embedded sections) - Anti-RASSF1 antibody [8E4] (ab119423)



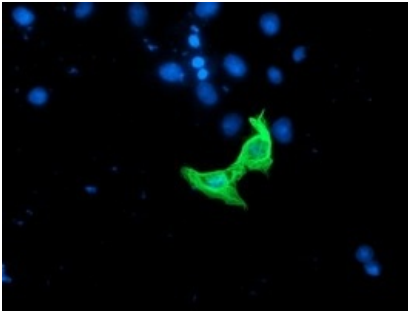
ab119423 at 1/150 dilution staining RASSF1 in Paraffin-embedded Human Lymphoma tissue by Immunohistochemistry.

Immunohistochemistry (Formalin/PFA-fixed paraffin-embedded sections) - Anti-RASSF1 antibody [8E4] (ab119423)



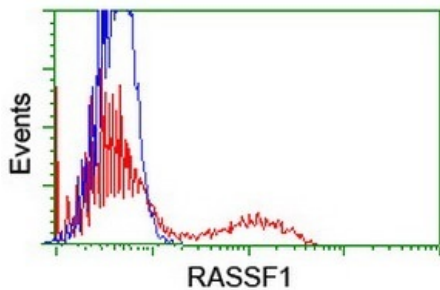
ab119423 at 1/150 dilution staining RASSF1 in Paraffin-embedded Human Tonsil tissue by Immunohistochemistry.

Immunohistochemistry (Formalin/PFA-fixed paraffin-embedded sections) - Anti-RASSF1 antibody [8E4] (ab119423)



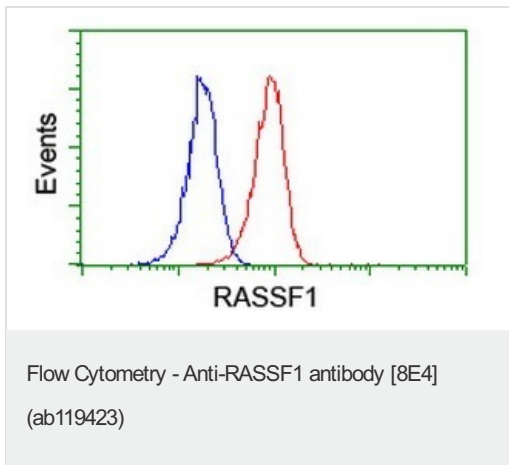
ab119423 at 1/100 dilution staining RASSF1 in COS7 cells transiently transfected with pCMV6-ENTRY RASSF1 by Immunofluorescence.

Immunocytochemistry/ Immunofluorescence - Anti-RASSF1 antibody [8E4] (ab119423)



ab119423 at 1/100 dilution staining RASSF1 in HEK293T cells transfected with either pCMV6-ENTRY RASSF1 overexpress plasmid (Red) or empty vector control plasmid (Blue) by flow cytometry.

Flow Cytometry - Anti-RASSF1 antibody [8E4] (ab119423)



ab119423 at 1/100 dilution staining RASSF1 in Jurkat cells by Flow cytometry (Red) compared to a nonspecific negative control antibody (Blue).

Please note: All products are "FOR RESEARCH USE ONLY AND ARE NOT INTENDED FOR DIAGNOSTIC OR THERAPEUTIC USE"

Our Abpromise to you: Quality guaranteed and expert technical support

- Replacement or refund for products not performing as stated on the datasheet
- Valid for 12 months from date of delivery
- Response to your inquiry within 24 hours
- We provide support in Chinese, English, French, German, Japanese and Spanish
- Extensive multi-media technical resources to help you
- We investigate all quality concerns to ensure our products perform to the highest standards

If the product does not perform as described on this datasheet, we will offer a refund or replacement. For full details of the Abpromise, please visit <http://www.abcam.com/abpromise> or contact our technical team.

Terms and conditions

- Guarantee only valid for products bought direct from Abcam or one of our authorized distributors