

Product datasheet

Anti-ATF7 antibody ab123046

1 Image

Overview

Product name	Anti-ATF7 antibody
Description	Rabbit polyclonal to ATF7
Host species	Rabbit
Tested applications	Suitable for: WB
Species reactivity	Reacts with: Rat Predicted to work with: Mouse, Rabbit, Horse, Chicken, Guinea pig, Cow, Cat, Dog, Human



Immunogen

Synthetic peptide corresponding to a region within C terminal amino acids 397-446 (HKDCPVTALQ KKTQGYLESP KESSEPTGSP APVIQHSSAT APSNGLSVRS) of Rat ATF7 (NP_001101585).

[Run BLAST with ExPASy](#) [Run BLAST with NCBI](#)

Positive control

Rat lung lysate.

Properties

Form	Liquid
Storage instructions	Shipped at 4°C. Store at +4°C short term (1-2 weeks). Upon delivery aliquot. Store at -20°C long term.
Storage buffer	Constituents: 97% PBS, 2% Sucrose
Purity	Immunogen affinity purified
Clonality	Polyclonal
Isotype	IgG

Applications

Our [Abpromise guarantee](#) covers the use of **ab123046** in the following tested applications.

The application notes include recommended starting dilutions; optimal dilutions/concentrations should be determined by the end user.

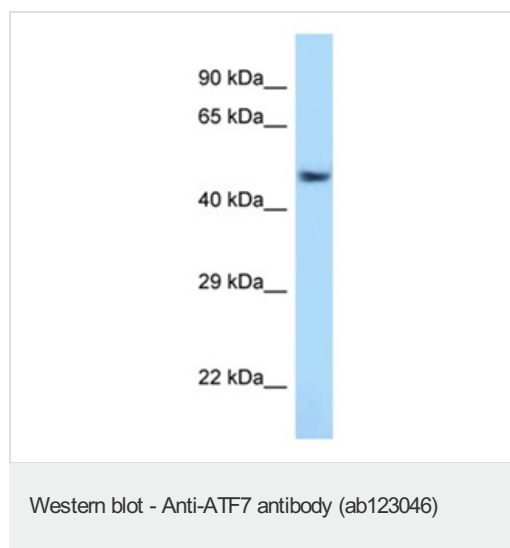
Application	Abreviews	Notes
-------------	-----------	-------

Application	Abreviews	Notes
WB		Use a concentration of 1 µg/ml. Predicted molecular weight: 52 kDa. Good results were obtained when blocked with 5% non-fat dry milk in 0.05% PBS-T.

Target

Function	Plays important functions in early cell signaling. Binds the cAMP response element (CRE) (consensus: 5'-GTGACGT[AG][AG]-3'), a sequence present in many viral and cellular promoters. Activator of the NF-ELAM1/delta-A site of the E-selectin promoter. Has no intrinsic transcriptional activity, but activates transcription on formation of JUN or FOS heterodimers. Also can bind TRE promoter sequences when heterodimerized with members of the JUN family. Isoform 4/ATF-A0 acts as a dominant repressor of the E-selectin/NF-ELAM1/delta-A promoter.
Tissue specificity	Expressed in heart, lung and skeletal muscle. Isoform 4 is expressed in various tissues including heart, brain, placenta, lung and skeletal muscle. Highest levels in skeletal muscle. Lowest in lung and placenta.
Sequence similarities	Belongs to the bZIP family. Contains 1 bZIP domain. Contains 1 C2H2-type zinc finger.
Post-translational modifications	On EGF stimulation, phosphorylated first on Thr-53 allowing subsequent phosphorylation on Thr-51. This latter phosphorylation prevents sumoylation, increases binding to TAF12 and enhances transcriptional activity. Sumoylation delays nuclear localization and inhibits transactivation activity through preventing binding to TAF12. RANBP2 appears to be the specific E3 ligase.
Cellular localization	Nucleus. Nucleus > nucleoplasm. Mainly nucleoplasmic. Restricted distribution to the perinuclear region. The sumoylated form locates to the nuclear periphery.

Images



Anti-ATF7 antibody (ab123046) at 1 µg/ml +
Rat lung lysate at 10 µg

Predicted band size: 52 kDa

Gel concentration: 12%

Please note: All products are "FOR RESEARCH USE ONLY AND ARE NOT INTENDED FOR DIAGNOSTIC OR THERAPEUTIC USE"

Our Abpromise to you: Quality guaranteed and expert technical support

- Replacement or refund for products not performing as stated on the datasheet
- Valid for 12 months from date of delivery
- Response to your inquiry within 24 hours

- We provide support in Chinese, English, French, German, Japanese and Spanish
- Extensive multi-media technical resources to help you
- We investigate all quality concerns to ensure our products perform to the highest standards

If the product does not perform as described on this datasheet, we will offer a refund or replacement. For full details of the Abpromise, please visit <http://www.abcam.com/abpromise> or contact our technical team.

Terms and conditions

- Guarantee only valid for products bought direct from Abcam or one of our authorized distributors