

## Product datasheet

# Anti-TRIP6 antibody ab123094

1 Image

### Overview

<b>Product name</b>	Anti-TRIP6 antibody
<b>Description</b>	Rabbit polyclonal to TRIP6
<b>Host species</b>	Rabbit
<b>Tested applications</b>	<b>Suitable for:</b> WB
<b>Species reactivity</b>	<b>Reacts with:</b> Human
<b>Immunogen</b>	Synthetic peptide conjugated to KLH, corresponding to a region within N terminal amino acids 94-124 of Human TRIP6 (NP_003293.2).
<b>Positive control</b>	<div style="border: 1px solid #ccc; padding: 5px; display: inline-block;"> <a href="#">Purchase matching WB positive control: Recombinant Human TRIP6 protein &gt;</a> </div> <p>HepG2 cell line lysates.</p>

### Properties

<b>Form</b>	Liquid
<b>Storage instructions</b>	Shipped at 4°C. Store at 4°C (up to 6 months). Store at -20°C long term.
<b>Storage buffer</b>	Preservative: 0.09% Sodium azide Constituent: 99% PBS
<b>Purity</b>	Immunogen affinity purified
<b>Purification notes</b>	ab123094 is purified through a protein A column, followed by peptide affinity purification.
<b>Clonality</b>	Polyclonal
<b>Isotype</b>	IgG

### Applications

Our [Abpromise guarantee](#) covers the use of **ab123094** in the following tested applications.

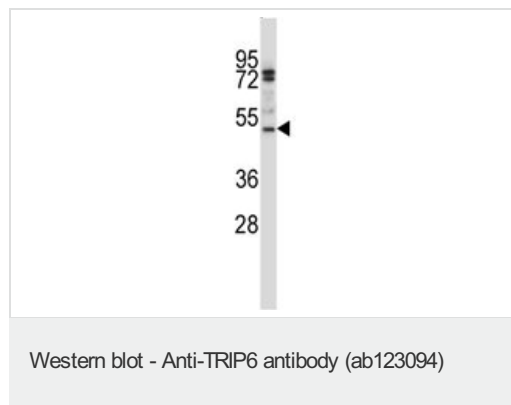
The application notes include recommended starting dilutions; optimal dilutions/concentrations should be determined by the end user.

Application	Abreviews	Notes
WB		1/100 - 1/500. Predicted molecular weight: 50 kDa.

## Target

<b>Function</b>	Relays signals from the cell surface to the nucleus to weaken adherens junction and promote actin cytoskeleton reorganization and cell invasiveness. Involved in lysophosphatidic acid-induced cell adhesion and migration. Acts as a transcriptional coactivator for NF-kappa-B and JUN, and mediates the transrepression of these transcription factors induced by glucocorticoid receptor.
<b>Tissue specificity</b>	Abundantly expressed in kidney, liver and lung. Lower levels in heart, placenta and pancreas. Expressed in colonic epithelial cells. Up-regulated in colonic tumors.
<b>Sequence similarities</b>	Belongs to the zyxin/ajuba family. Contains 3 LIM zinc-binding domains.
<b>Domain</b>	The LIM zinc-binding domains mediate interaction with LPAR2 and with S.typhimurium protein sseI.
<b>Post-translational modifications</b>	Phosphorylation at Tyr-55 by SRC is required for enhancement of lysophosphatidic acid-induced cell migration. Tyr-55 is dephosphorylated by PTPN13.
<b>Cellular localization</b>	Cytoplasm > cytoskeleton. Cell junction > focal adhesion. Nucleus. Cytoplasm. Shuttles between nucleus and cytoplasm.

## Images



Anti-TRIP6 antibody (ab123094) at 1/100 dilution + HepG2 cell line lysates at 35 µg

**Predicted band size:** 50 kDa

**Please note:** All products are "FOR RESEARCH USE ONLY AND ARE NOT INTENDED FOR DIAGNOSTIC OR THERAPEUTIC USE"

## Our Abpromise to you: Quality guaranteed and expert technical support

- Replacement or refund for products not performing as stated on the datasheet
- Valid for 12 months from date of delivery
- Response to your inquiry within 24 hours
- We provide support in Chinese, English, French, German, Japanese and Spanish

- Extensive multi-media technical resources to help you
- We investigate all quality concerns to ensure our products perform to the highest standards

If the product does not perform as described on this datasheet, we will offer a refund or replacement. For full details of the Abpromise, please visit <http://www.abcam.com/abpromise> or contact our technical team.

### **Terms and conditions**

---

- Guarantee only valid for products bought direct from Abcam or one of our authorized distributors