

Product datasheet

Anti-CD63 antibody [TEA3/18] (OC515) ab123622

1 Image

Overview

<b>Product name</b>	Anti-CD63 antibody [TEA3/18] (OC515)
<b>Description</b>	Mouse monoclonal [TEA3/18] to CD63 (OC515)
<b>Host species</b>	Mouse
<b>Conjugation</b>	OC515. Ex: 405nm, Em: 515nm
<b>Specificity</b>	The monoclonal antibody is directed against the CD63- antigen, which is expressed in platelet lysosomes that is translocated to the platelet surface upon activation with strong agonists. The antigen is also present in most peripheral blood cells (not in erythrocytes) and in many tissues.
<b>Tested applications</b>	<b>Suitable for:</b> Flow Cyt
<b>Species reactivity</b>	<b>Reacts with:</b> Human
<b>Immunogen</b>	Activated HUVEC cells
<b>Positive control</b>	Human platelets from normal Human peripheral blood.
<b>General notes</b>	OC515 (Abs/Em Max:405/518nm). Direct replacement for Pacific Orange®.

Properties

<b>Form</b>	Liquid
<b>Storage instructions</b>	Shipped at 4°C. Store at +4°C.
<b>Storage buffer</b>	pH: 7.20 Preservative: 0.09% Sodium azide Note: Aqueous buffered solution containing protein stabilizer
<b>Purity</b>	Immunogen affinity purified
<b>Clonality</b>	Monoclonal
<b>Clone number</b>	TEA3/18
<b>Isotype</b>	IgG1

Applications

Our [Abpromise guarantee](#) covers the use of **ab123622** in the following tested applications.

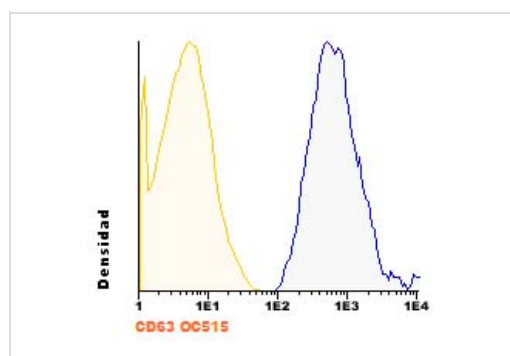
The application notes include recommended starting dilutions; optimal dilutions/concentrations should be determined by the end user.

Application	Abreviews	Notes
Flow Cyt		Use 5µl for 10 <sup>6</sup> cells. <a href="#">ab126030</a> -Mouse monoclonal IgG1, is suitable for use as an isotype control with this antibody.

## Target

<b>Function</b>	This antigen is associated with early stages of melanoma tumor progression. May play a role in growth regulation.
<b>Tissue specificity</b>	Dysplastic nevi, radial growth phase primary melanomas, hematopoietic cells, tissue macrophages.
<b>Sequence similarities</b>	Belongs to the tetraspanin (TM4SF) family.
<b>Cellular localization</b>	Cell membrane. Lysosome membrane. Late endosome membrane. Also found in Weibel-Palade bodies of endothelial cells. Located in platelet dense granules.

## Images



ab123622, at 5 µl/10<sup>6</sup> cells, staining CD63 in Human Platelets by Flow Cytometry. Blue histogram represents activated platelets and yellow histogram non-activated platelets. Total events were used for analysis.

Flow Cytometry - Anti-CD63 antibody [TEA3/18] (OC515) (ab123622)

**Please note:** All products are "FOR RESEARCH USE ONLY AND ARE NOT INTENDED FOR DIAGNOSTIC OR THERAPEUTIC USE"

## Our Abpromise to you: Quality guaranteed and expert technical support

- Replacement or refund for products not performing as stated on the datasheet
- Valid for 12 months from date of delivery
- Response to your inquiry within 24 hours
- We provide support in Chinese, English, French, German, Japanese and Spanish
- Extensive multi-media technical resources to help you
- We investigate all quality concerns to ensure our products perform to the highest standards

If the product does not perform as described on this datasheet, we will offer a refund or replacement. For full details of the Abpromise, please visit <http://www.abcam.com/abpromise> or contact our technical team.

## Terms and conditions

---

- Guarantee only valid for products bought direct from Abcam or one of our authorized distributors