

Product datasheet

Anti-CD11b antibody [DCIS1/18] (OC515) ab123636

1 Image

Overview

| | |
|----------------------------|---|
| Product name | Anti-CD11b antibody [DCIS1/18] (OC515) |
| Description | Mouse monoclonal [DCIS1/18] to CD11b (OC515) |
| Host species | Mouse |
| Conjugation | OC515. Ex: 405nm, Em: 515nm |
| Tested applications | Suitable for: Flow Cyt |
| Species reactivity | Reacts with: Human |
| Immunogen | Dendritic cells derived from human monocytes |
| Positive control | Normal Human Peripheral Blood cells. |
| General notes | OC515 (Abs/Em Max:405/518nm). Direct replacement for Pacific Orange®. |

Properties

| | |
|-----------------------------|---|
| Form | Liquid |
| Storage instructions | Shipped at 4°C. Store at +4°C. Do Not Freeze. |
| Storage buffer | pH: 7.20 Preservative: 0.09% Sodium azide |
| Purity | Protein A purified |
| Clonality | Monoclonal |
| Clone number | DCIS1/18 |
| Isotype | IgG2a |

Applications

Our [Abpromise guarantee](#) covers the use of **ab123636** in the following tested applications.

The application notes include recommended starting dilutions; optimal dilutions/concentrations should be determined by the end user.

| Application | Abreviews | Notes |
|-------------|-----------|-------|
|-------------|-----------|-------|

| Application | Abreviews | Notes |
|-------------|-----------|-------|
|-------------|-----------|-------|

Flow Cyt

Use 5µl for 10⁶ cells.

[ab126028](#) - Mouse monoclonal IgG2a, is suitable for use as an isotype control with this antibody.

Target

Function

Integrin alpha-M/beta-2 is implicated in various adhesive interactions of monocytes, macrophages and granulocytes as well as in mediating the uptake of complement-coated particles. It is identical with CR-3, the receptor for the iC3b fragment of the third complement component. It probably recognizes the R-G-D peptide in C3b. Integrin alpha-M/beta-2 is also a receptor for fibrinogen, factor X and ICAM1. It recognizes P1 and P2 peptides of fibrinogen gamma chain.

Tissue specificity

Predominantly expressed in monocytes and granulocytes.

Involvement in disease

Genetic variations in ITGAM has been associated with susceptibility to systemic lupus erythematosus type 6 (SLEB6) [MIM:609939]. Systemic lupus erythematosus (SLE) is a chronic, inflammatory and often febrile multisystemic disorder of connective tissue. It affects principally the skin, joints, kidneys and serosal membranes. It is thought to represent a failure of the regulatory mechanisms of the autoimmune system.

Sequence similarities

Belongs to the integrin alpha chain family.

Contains 7 FG-GAP repeats.

Contains 1 VWFA domain.

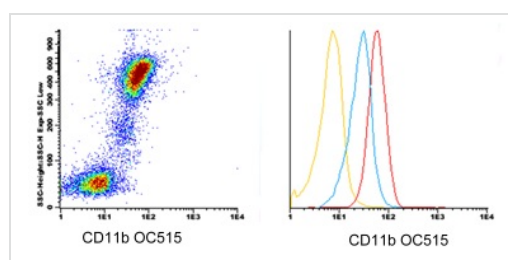
Domain

The integrin I-domain (insert) is a VWFA domain. Integrins with I-domains do not undergo protease cleavage.

Cellular localization

Membrane.

Images



ab123636, at 5 µl/10⁶ cells, staining CD11b in normal Human peripheral blood cells by Flow Cytometry.

Flow Cytometry - Anti-CD11b antibody [DCIS1/18] (OC515) (ab123636)

Please note: All products are "FOR RESEARCH USE ONLY AND ARE NOT INTENDED FOR DIAGNOSTIC OR THERAPEUTIC USE"

Our Abpromise to you: Quality guaranteed and expert technical support

- Replacement or refund for products not performing as stated on the datasheet
- Valid for 12 months from date of delivery
- Response to your inquiry within 24 hours

- We provide support in Chinese, English, French, German, Japanese and Spanish
- Extensive multi-media technical resources to help you
- We investigate all quality concerns to ensure our products perform to the highest standards

If the product does not perform as described on this datasheet, we will offer a refund or replacement. For full details of the Abpromise, please visit <http://www.abcam.com/abpromise> or contact our technical team.

Terms and conditions

- Guarantee only valid for products bought direct from Abcam or one of our authorized distributors