

Product datasheet

Anti-KIAA1609 antibody [12B1] ab123931

13 Images

Overview

<b>Product name</b>	Anti-KIAA1609 antibody [12B1]
<b>Description</b>	Mouse monoclonal [12B1] to KIAA1609
<b>Host species</b>	Mouse
<b>Tested applications</b>	<b>Suitable for:</b> WB, IHC-P, ICC/IF
<b>Species reactivity</b>	<b>Reacts with:</b> Human
<b>Immunogen</b>	Recombinant full length Human KIAA1609 produced in HEK293T cells (NP_065998).
<b>Positive control</b>	HEK293T cells transfected with pCMV6-ENTRY KIAA1609 cDNA; Human colon, colon adenocarcinoma, kidney, liver, lung, ovary adenocarcinoma, pancreas, thyroid carcinoma, endometrium, prostate and prostate carcinoma tissues; COS7 cells transiently transfected by pCMV6-ENTRY KIAA1609.
<b>General notes</b>	Dilute in PBS (pH7.3) before use. Stable for 12 months from date of receipt.

Properties

<b>Form</b>	Liquid
<b>Storage instructions</b>	Shipped at 4°C. Upon delivery aliquot and store at -20°C. Avoid repeated freeze / thaw cycles.
<b>Storage buffer</b>	pH: 7.30 Preservative: 0.02% Sodium azide Constituents: 48% PBS, 50% Glycerol, 1% BSA
<b>Purity</b>	Protein G purified
<b>Purification notes</b>	ab123931 is purified from Mouse ascites fluid by affinity chromatography.
<b>Clonality</b>	Monoclonal
<b>Clone number</b>	12B1
<b>Isotype</b>	IgG1

Applications

Our [Abpromise guarantee](#) covers the use of **ab123931** in the following tested applications.

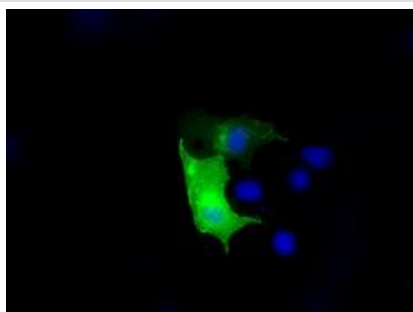
The application notes include recommended starting dilutions; optimal dilutions/concentrations should be determined by the end user.

Application	Abreviews	Notes
WB		1/2000. Predicted molecular weight: 50 kDa.
IHC-P		1/50.
ICC/IF		1/100.

## Target

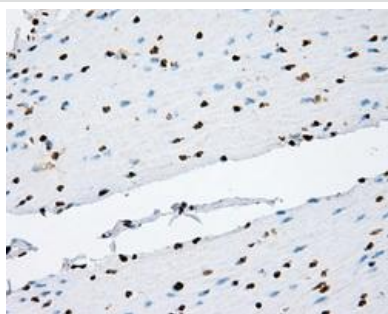
**Sequence similarities** Contains 1 TLD domain.

## Images



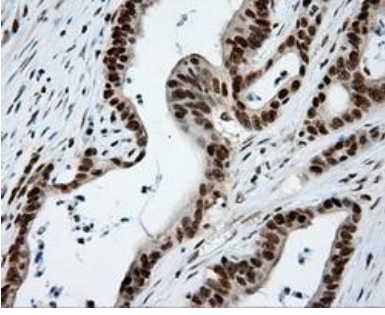
ab123931 at 1/100 dilution staining KIAA1609 in COS7 cells transiently transfected with pCMV6-ENTRY KIAA1609 by Immunofluorescence.

Immunocytochemistry/ Immunofluorescence - Anti-KIAA1609 antibody [12B1] (ab123931)



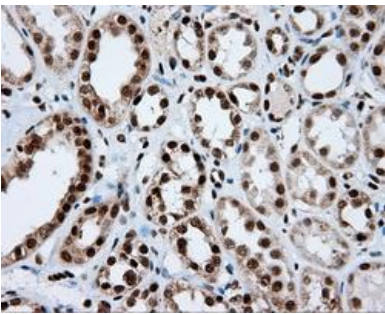
ab123931 at 1/50 dilution staining KIAA1609 in Paraffin-embedded Human Colon tissue by Immunohistochemistry.

Immunohistochemistry (Formalin/PFA-fixed paraffin-embedded sections) - Anti-KIAA1609 antibody [12B1] (ab123931)



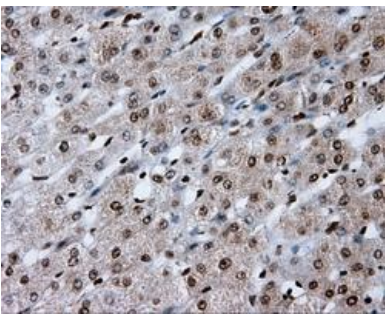
ab123931 at 1/50 dilution staining KIAA1609 in Paraffin-embedded Human Colon adenocarcinoma tissue by Immunohistochemistry.

Immunohistochemistry (Formalin/PFA-fixed paraffin-embedded sections) - Anti-KIAA1609 antibody [12B1] (ab123931)



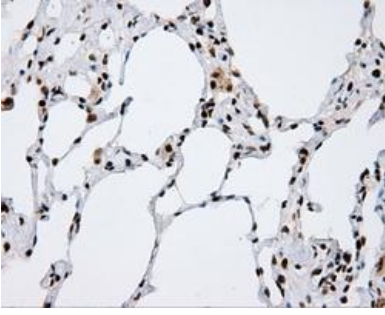
ab123931 at 1/50 dilution staining KIAA1609 in Paraffin-embedded Human Kidney tissue by Immunohistochemistry.

Immunohistochemistry (Formalin/PFA-fixed paraffin-embedded sections) - Anti-KIAA1609 antibody [12B1] (ab123931)



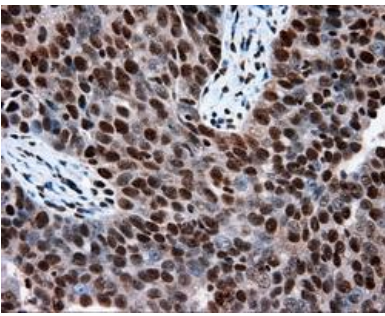
ab123931 at 1/50 dilution staining KIAA1609 in Paraffin-embedded Human Liver tissue by Immunohistochemistry.

Immunohistochemistry (Formalin/PFA-fixed paraffin-embedded sections) - Anti-KIAA1609 antibody [12B1] (ab123931)



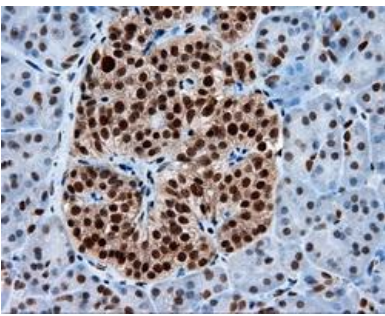
ab123931 at 1/50 dilution staining KIAA1609 in Paraffin-embedded Human Lung tissue by Immunohistochemistry.

Immunohistochemistry (Formalin/PFA-fixed paraffin-embedded sections) - Anti-KIAA1609 antibody [12B1] (ab123931)



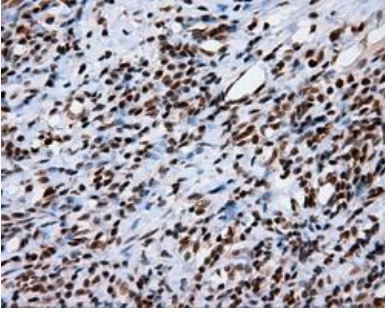
ab123931 at 1/50 dilution staining KIAA1609 in Paraffin-embedded Human Ovary adenocarcinoma tissue by Immunohistochemistry.

Immunohistochemistry (Formalin/PFA-fixed paraffin-embedded sections) - Anti-KIAA1609 antibody [12B1] (ab123931)



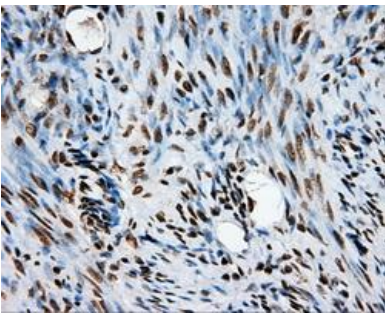
ab123931 at 1/50 dilution staining KIAA1609 in Paraffin-embedded Human Pancreas tissue by Immunohistochemistry.

Immunohistochemistry (Formalin/PFA-fixed paraffin-embedded sections) - Anti-KIAA1609 antibody [12B1] (ab123931)



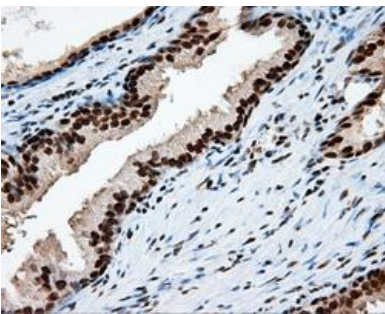
ab123931 at 1/50 dilution staining KIAA1609 in Paraffin-embedded Human Thyroid carcinoma tissue by Immunohistochemistry.

Immunohistochemistry (Formalin/PFA-fixed paraffin-embedded sections) - Anti-KIAA1609 antibody [12B1] (ab123931)



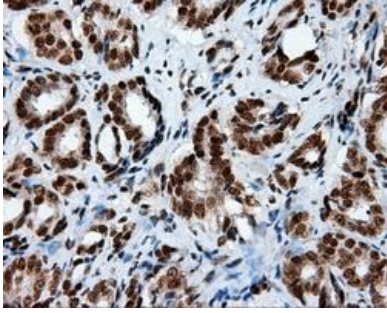
ab123931 at 1/50 dilution staining KIAA1609 in Paraffin-embedded Human Endometrium tissue by Immunohistochemistry.

Immunohistochemistry (Formalin/PFA-fixed paraffin-embedded sections) - Anti-KIAA1609 antibody [12B1] (ab123931)



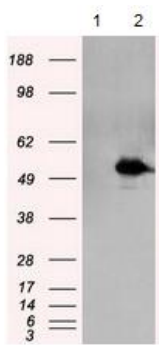
ab123931 at 1/50 dilution staining KIAA1609 in Paraffin-embedded Human Prostate tissue by Immunohistochemistry.

Immunohistochemistry (Formalin/PFA-fixed paraffin-embedded sections) - Anti-KIAA1609 antibody [12B1] (ab123931)



ab123931 at 1/50 dilution staining KIAA1609 in Paraffin-embedded Human Prostate carcinoma tissue by Immunohistochemistry.

Immunohistochemistry (Formalin/PFA-fixed paraffin-embedded sections) - Anti-KIAA1609 antibody [12B1] (ab123931)



**All lanes :** Anti-KIAA1609 antibody [12B1] (ab123931) at 1/2000 dilution

**Lane 1 :** HEK293T cells transfected with pCMV6-ENTRY control cDNA

**Lane 2 :** HEK293T cells transfected with pCMV6-ENTRY KIAA1609 cDNA

Lysates/proteins at 5 µg per lane.

**Predicted band size:** 50 kDa

Western blot - Anti-KIAA1609 antibody [12B1] (ab123931)

HEK293T cell lysates were generated from transient transfection of the cDNA clone (RC205086)

**Please note:** All products are "FOR RESEARCH USE ONLY AND ARE NOT INTENDED FOR DIAGNOSTIC OR THERAPEUTIC USE"

### Our Abpromise to you: Quality guaranteed and expert technical support

- Replacement or refund for products not performing as stated on the datasheet
- Valid for 12 months from date of delivery
- Response to your inquiry within 24 hours
- We provide support in Chinese, English, French, German, Japanese and Spanish
- Extensive multi-media technical resources to help you
- We investigate all quality concerns to ensure our products perform to the highest standards

If the product does not perform as described on this datasheet, we will offer a refund or replacement. For full details of the Abpromise, please visit <http://www.abcam.com/abpromise> or contact our technical team.

## Terms and conditions

---

- Guarantee only valid for products bought direct from Abcam or one of our authorized distributors