

## Product datasheet

# Anti-ANKRD53 antibody [1A7] ab124035

[5 Images](#)

### Overview

---

<b>Product name</b>	Anti-ANKRD53 antibody [1A7]
<b>Description</b>	Mouse monoclonal [1A7] to ANKRD53
<b>Host species</b>	Mouse
<b>Tested applications</b>	<b>Suitable for:</b> WB, IHC-P, Flow Cyt, ICC/IF
<b>Species reactivity</b>	<b>Reacts with:</b> Human
<b>Immunogen</b>	Recombinant fragment, corresponding to amino acids 1-300 of Human ANKRD53 produced in E.coli (NP_079209).
<b>Positive control</b>	HEK293T cell lysate transfected with pCMV6-ENTRY ANKRD53 cDNA; Human lymph node and lymphoma tissues; COS7 cells transiently transfected with pCMV6-ENTRY ANKRD53; HEK293T cells transfected with an ANKRD53 overexpress plasmid
<b>General notes</b>	Dilute in PBS (pH7.3) before use. Stable for 12 months from date of receipt.

### Properties

---

<b>Form</b>	Liquid
<b>Storage instructions</b>	Shipped at 4°C. Upon delivery aliquot and store at -20°C. Avoid repeated freeze / thaw cycles.
<b>Storage buffer</b>	pH: 7.30 Preservative: 0.02% Sodium azide Constituents: 48% PBS, 50% Glycerol, 1% BSA
<b>Purity</b>	Protein A purified
<b>Purification notes</b>	ab124035 was purified from mouse ascites fluids by affinity chromatography.
<b>Clonality</b>	Monoclonal
<b>Clone number</b>	1A7
<b>Isotype</b>	IgG2b

### Applications

---

Our [Abpromise guarantee](#) covers the use of **ab124035** in the following tested applications.

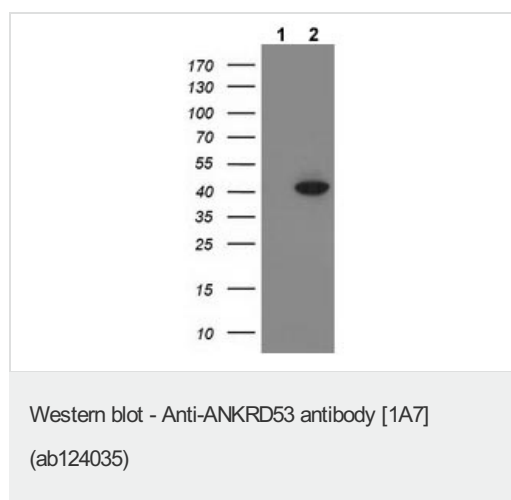
The application notes include recommended starting dilutions; optimal dilutions/concentrations should be determined by the end user.

Application	Abreviews	Notes
WB		1/1000 - 1/2000. Predicted molecular weight: 60 kDa.
IHC-P		1/150.
Flow Cyt		1/100. <a href="#">ab170192</a> - Mouse monoclonal IgG2b, is suitable for use as an isotype control with this antibody.
ICC/IF		1/100.

## Target

**Sequence similarities** Contains 3 ANK repeats.

## Images



**All lanes** : Anti-ANKRD53 antibody [1A7] (ab124035) at 1/1000 dilution

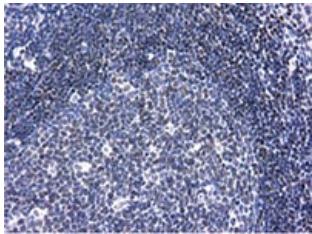
**Lane 1** : HEK293T cell lysate transfected with pCMV6-ENTRY control

**Lane 2** : HEK293T cell lysate transfected with pCMV6-ENTRY ANKRD53 cDNA

Lysates/proteins at 5 µg per lane.

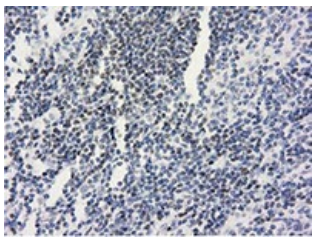
**Predicted band size:** 60 kDa

HEK293T cell lysates were generated from transient transfection of the cDNA clone (RC205243)



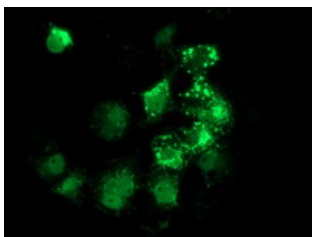
ab124035, at 1/150 dilution, staining ANKRD53 in paraffin-embedded Human lymph node tissue by Immunohistochemistry.

Immunohistochemistry (Formalin/PFA-fixed paraffin-embedded sections) - Anti-ANKRD53 antibody [1A7] (ab124035)



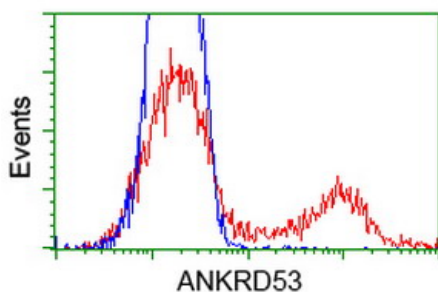
ab124035, at 1/150 dilution, staining ANKRD53 in paraffin-embedded Human lymphoma tissue by Immunohistochemistry.

Immunohistochemistry (Formalin/PFA-fixed paraffin-embedded sections) - Anti-ANKRD53 antibody [1A7] (ab124035)



ab124035, at 1/100 dilution, staining ANKRD53 in COS7 cells transiently transfected with pCMV6-ENTRY ANKRD53 by Immunofluorescence.

Immunocytochemistry/ Immunofluorescence - Anti-ANKRD53 antibody [1A7] (ab124035)



ab124035, at 1/100 dilution, staining ANKRD53 in HEK293T cells transfected with an ANKRD53 overexpress plasmid (Red) or empty vector control plasmid (Blue) by Flow cytometry

Flow Cytometry - Anti-ANKRD53 antibody [1A7] (ab124035)

### **Our Abpromise to you: Quality guaranteed and expert technical support**

---

- Replacement or refund for products not performing as stated on the datasheet
- Valid for 12 months from date of delivery
- Response to your inquiry within 24 hours
  
- We provide support in Chinese, English, French, German, Japanese and Spanish
- Extensive multi-media technical resources to help you
- We investigate all quality concerns to ensure our products perform to the highest standards

If the product does not perform as described on this datasheet, we will offer a refund or replacement. For full details of the Abpromise, please visit <http://www.abcam.com/abpromise> or contact our technical team.

### **Terms and conditions**

---

- Guarantee only valid for products bought direct from Abcam or one of our authorized distributors