

Product datasheet

Anti-CBWD1 antibody [4D4] ab124038

10 Images

Overview

Product name	Anti-CBWD1 antibody [4D4]
Description	Mouse monoclonal [4D4] to CBWD1
Tested applications	Suitable for: WB, IHC-P, Flow Cyt, ICC/IF
Species reactivity	Reacts with: Rat, Dog, Human, Monkey
Immunogen	Recombinant full length Human CBWD1 produced in HEK293T cells (NP_060961).
Positive control	HEK293T cell lysate transfected with pCMV6-ENTRY CBWD1 cDNA; HepG2, HeLa, HT29, A549, COS7, Jurkat and MCF7 cell extracts; Human prostate, bladder carcinoma, lymph node and lymphoma tissues; COS7 cells transiently transfected by pCMV6-ENTRY CBWD1; HEK293T cells transfected with a CBWD1 overexpress plasmid; HeLa and Jurkat cells.
General notes	Dilute in PBS (pH7.3) before use. Stable for 12 months from date of receipt.

Properties

Form	Liquid
Storage instructions	Shipped at 4°C. Upon delivery aliquot and store at -20°C. Avoid repeated freeze / thaw cycles.
Storage buffer	pH: 7.30 Preservative: 0.02% Sodium azide Constituents: 48% PBS, 50% Glycerol, 1% BSA
Purity	Protein A purified
Purification notes	ab124038 was purified from Mouse ascites fluid by affinity chromatography.
Clonality	Monoclonal
Clone number	4D4
Isotype	IgG2b

Applications

Our [Abpromise guarantee](#) covers the use of **ab124038** in the following tested applications.

The application notes include recommended starting dilutions; optimal dilutions/concentrations should be determined by the end user.

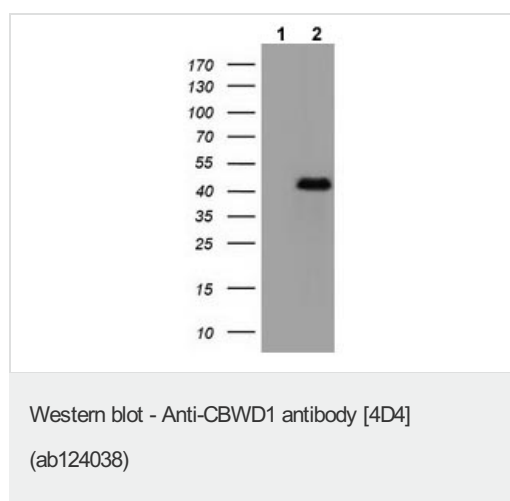
Application	Abreviews	Notes
WB		1/500 - 1/2000. Predicted molecular weight: 44 kDa.
IHC-P		1/150.
Flow Cyt		1/100. ab170192 -Mouse monoclonal IgG2b, is suitable for use as an isotype control with this antibody.
ICC/IF		1/100.

Target

Tissue specificity Ubiquitously expressed. Up-regulated in cultured astrocytes treated with dopamine.

Sequence similarities Belongs to the CobW family.
Contains 1 cobW C-terminal domain.

Images



All lanes : Anti-CBWD1 antibody [4D4] (ab124038) at 1/500 dilution

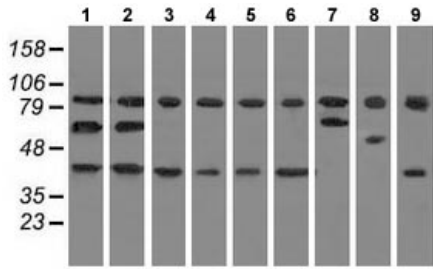
Lane 1 : HEK293T cell lysate transfected with pCMV6-ENTRY control

Lane 2 : HEK293T cell lysate transfected with pCMV6-ENTRY CBWD1 cDNA

Lysates/proteins at 5 µg per lane.

Predicted band size : 44 kDa

HEK293T cell lysates were generated from transient transfection of the cDNA clone (RC222790)



Western blot - Anti-CBWD1 antibody [4D4]
(ab124038)

All lanes : Anti-CBWD1 antibody [4D4]
(ab124038) at 1/500 dilution

Lane 1 : HepG2 cell extract

Lane 2 : HeLa cell extract

Lane 3 : HT29 cell extract

Lane 4 : A549 cell extract

Lane 5 : COS7 cell extract

Lane 6 : Jurkat cell extract

Lane 7 : MDCK cell extract

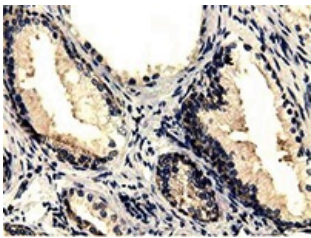
Lane 8 : PC12 cell extract

Lane 9 : MCF7 cell extract

Lysates/proteins at 35 µg per lane.

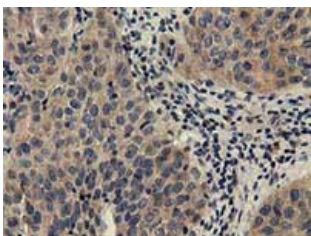
Predicted band size : 44 kDa

HEK293T cell lysates were generated from transient transfection of the cDNA clone (RC222790)



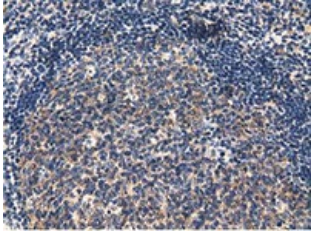
Immunohistochemistry (Formalin/PFA-fixed paraffin-embedded sections) - Anti-CBWD1 antibody [4D4]
(ab124038)

ab124038, at 1/150 dilution, staining CBWD1 in paraffin-embedded Human prostate tissue by Immunohistochemistry.



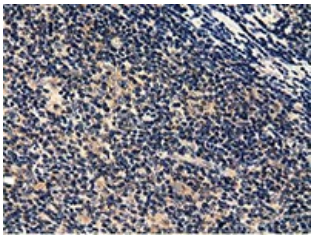
Immunohistochemistry (Formalin/PFA-fixed paraffin-embedded sections) - Anti-CBWD1 antibody [4D4]
(ab124038)

ab124038, at 1/150 dilution, staining CBWD1 in paraffin-embedded Human bladder carcinoma tissue by Immunohistochemistry.



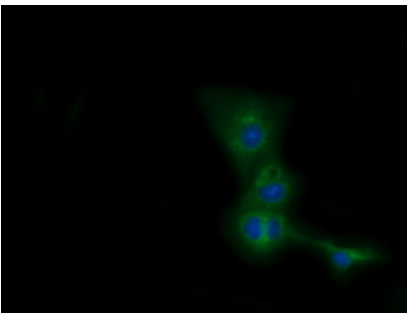
Immunohistochemistry (Formalin/PFA-fixed paraffin-embedded sections) - Anti-CBWD1 antibody [4D4] (ab124038)

ab124038, at 1/150 dilution, staining CBWD1 in paraffin-embedded Human lymph node tissue by Immunohistochemistry.



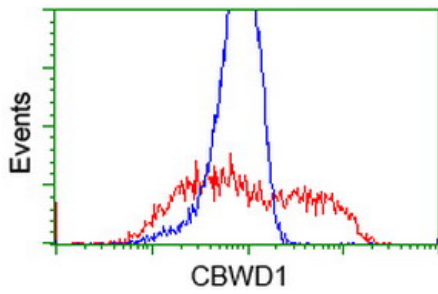
Immunohistochemistry (Formalin/PFA-fixed paraffin-embedded sections) - Anti-CBWD1 antibody [4D4] (ab124038)

ab124038, at 1/150 dilution, staining CBWD1 in paraffin-embedded Human lymphoma tissue by Immunohistochemistry.



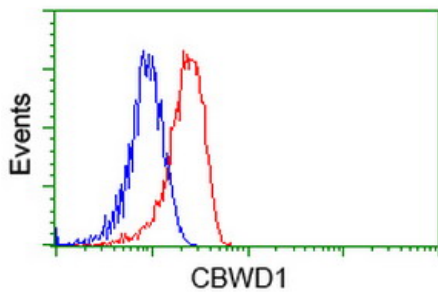
Immunocytochemistry/ Immunofluorescence - Anti-CBWD1 antibody [4D4] (ab124038)

ab124038, at 1/100 dilution, staining CBWD1 in COS7 cells transiently transfected with pCMV6-ENTRY CBWD1 by Immunofluorescence.



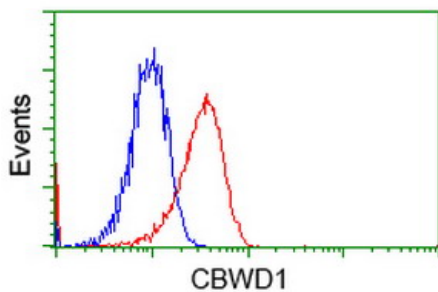
Flow Cytometry - Anti-CBWD1 antibody [4D4]
(ab124038)

ab124038, at 1/100 dilution, staining CBWD1 in HEK293T cells transfected with a CBWD1 overexpress plasmid (Red) or empty vector control plasmid (Blue) by Flow cytometry.



Flow Cytometry - Anti-CBWD1 antibody [4D4]
(ab124038)

ab124038, at 1/100 dilution, staining CBWD1 in HeLa cells (Red) by Flow cytometry, compared to a nonspecific negative control antibody (Blue).



Flow Cytometry - Anti-CBWD1 antibody [4D4]
(ab124038)

ab124038, at 1/100 dilution, staining CBWD1 in Jurkat cells (Red) by Flow cytometry, compared to a nonspecific negative control antibody (Blue).

Please note: All products are "FOR RESEARCH USE ONLY AND ARE NOT INTENDED FOR DIAGNOSTIC OR THERAPEUTIC USE"

Our Abpromise to you: Quality guaranteed and expert technical support

- Replacement or refund for products not performing as stated on the datasheet
- Valid for 12 months from date of delivery
- Response to your inquiry within 24 hours
- We provide support in Chinese, English, French, German, Japanese and Spanish

- Extensive multi-media technical resources to help you
- We investigate all quality concerns to ensure our products perform to the highest standards

If the product does not perform as described on this datasheet, we will offer a refund or replacement. For full details of the Abpromise, please visit <http://www.abcam.com/abpromise> or contact our technical team.

Terms and conditions

- Guarantee only valid for products bought direct from Abcam or one of our authorized distributors