

Product datasheet

Anti-RAB37 antibody ab124286

2 Images

Overview

Product name	Anti-RAB37 antibody
Description	Rabbit polyclonal to RAB37
Host species	Rabbit
Tested applications	Suitable for: WB, IHC-P, ELISA
Species reactivity	Reacts with: Human
Immunogen	Synthetic peptide conjugated to KLH, corresponding to the C terminus of Human RAB37 protein.
Positive control	Human skin tissue; HuvEc cell line lysate

Properties

Form	Liquid
Storage instructions	Shipped at 4°C. Store at -20°C.
Storage buffer	pH: 7.40 Preservative: 0.02% Sodium azide Constituents: 49% PBS, 50% Glycerol, 0.02% Sodium chloride Note: PBS is without Mg ²⁺ and Ca ²⁺
Purity	Immunogen affinity purified
Clonality	Polyclonal
Isotype	IgG

Applications

Our [Abpromise guarantee](#) covers the use of **ab124286** in the following tested applications.

The application notes include recommended starting dilutions; optimal dilutions/concentrations should be determined by the end user.

Application	Abreviews	Notes
WB		1/500 - 1/1000. Predicted molecular weight: 25 kDa.
IHC-P		Use a concentration of 5 µg/ml.

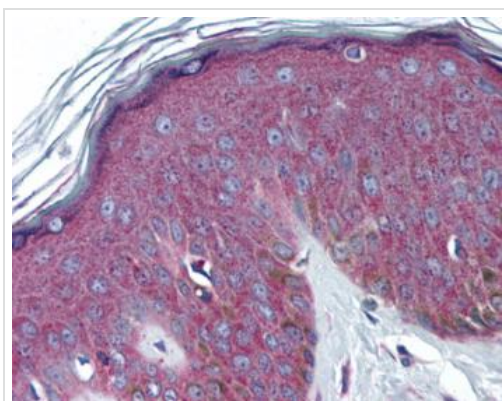
Application	Abreviews	Notes
ELISA		1/1000.

Target

Sequence similarities Belongs to the small GTPase superfamily. Rab family.

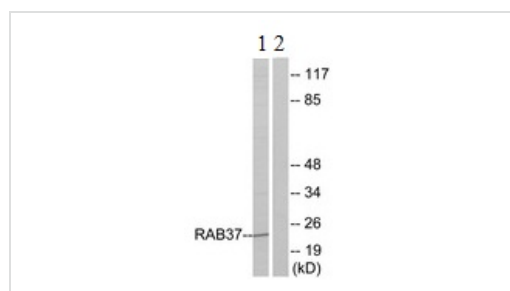
Cellular localization Cytoplasmic vesicle. Secretory granules.

Images



ab124286, at 5 µg/ml, staining RAB37 in paraffin embedded Human skin tissue by Immunohistochemistry.

Immunohistochemistry (Formalin/PFA-fixed paraffin-embedded sections) - RAB37 antibody (ab124286)



Western blot - Anti-RAB37 antibody (ab124286)

All lanes : Anti-RAB37 antibody (ab124286) at 1/500 dilution

Lane 1 : Extracts from HuvEc cells

Lane 2 : Extracts from HuvEc cells treated with the synthesized peptide

Predicted band size: 25 kDa

Please note: All products are "FOR RESEARCH USE ONLY AND ARE NOT INTENDED FOR DIAGNOSTIC OR THERAPEUTIC USE"

Our Abpromise to you: Quality guaranteed and expert technical support

- Replacement or refund for products not performing as stated on the datasheet
- Valid for 12 months from date of delivery
- Response to your inquiry within 24 hours

- We provide support in Chinese, English, French, German, Japanese and Spanish
- Extensive multi-media technical resources to help you
- We investigate all quality concerns to ensure our products perform to the highest standards

If the product does not perform as described on this datasheet, we will offer a refund or replacement. For full details of the Abpromise, please visit <http://www.abcam.com/abpromise> or contact our technical team.

Terms and conditions

- Guarantee only valid for products bought direct from Abcam or one of our authorized distributors