

Product datasheet

Anti-CD69 antibody ab125392

1 Image

Overview

Product name	Anti-CD69 antibody
Description	Rabbit polyclonal to CD69
Host species	Rabbit
Tested applications	Suitable for: WB
Species reactivity	Reacts with: Human Predicted to work with: Mouse, Rat, Guinea pig, Dog
Immunogen	Synthetic peptide corresponding to a region within internal sequence amino acids 98-147 (FISTVKRSWT SAQNACSEHG ATLAVIDSEK DMNFLKRYAG REEHVWGLKK) of Human CD69 (NP_001772). Run BLAST with ExPASy Run BLAST with NCBI
Positive control	HCT15 cell lysate.

Properties

Form	Liquid
Storage instructions	Shipped at 4°C. Upon delivery aliquot and store at -20°C. Avoid repeated freeze / thaw cycles.
Storage buffer	Constituents: 97% PBS, 2% Sucrose
Purity	Immunogen affinity purified
Clonality	Polyclonal
Isotype	IgG

Applications

Our [Abpromise guarantee](#) covers the use of **ab125392** in the following tested applications.

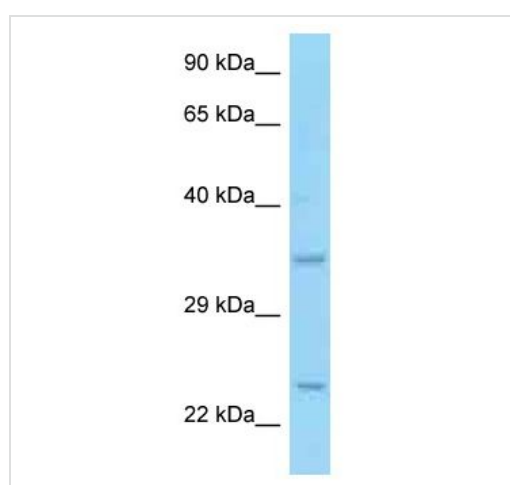
The application notes include recommended starting dilutions; optimal dilutions/concentrations should be determined by the end user.

Application	Abreviews	Notes
WB		Use a concentration of 1 µg/ml. Predicted molecular weight: 23 kDa. Good results were obtained when blocked with 5% non-fat dry milk in 0.05% PBS-T.

Target

Function	Involved in lymphocyte proliferation and functions as a signal transmitting receptor in lymphocytes, natural killer (NK) cells, and platelets.
Tissue specificity	Expressed on the surface of activated T-cells, B-cells, natural killer cells, neutrophils, eosinophils, epidermal Langerhans cells and platelets.
Sequence similarities	Contains 1 C-type lectin domain.
Developmental stage	Earliest inducible cell surface glycoprotein acquired during lymphoid activation.
Post-translational modifications	Constitutive Ser/Thr phosphorylation in both mature thymocytes and activated T-lymphocytes.
Cellular localization	Membrane.

Images



Western blot - Anti-CD69 antibody (ab125392)

Anti-CD69 antibody (ab125392) at 1 µg/ml +
HCT15 cell lysate at 10 µg

Predicted band size: 23 kDa

Gel concentration: 12%.

Please note: All products are "FOR RESEARCH USE ONLY AND ARE NOT INTENDED FOR DIAGNOSTIC OR THERAPEUTIC USE"

Our Abpromise to you: Quality guaranteed and expert technical support

- Replacement or refund for products not performing as stated on the datasheet
- Valid for 12 months from date of delivery
- Response to your inquiry within 24 hours
- We provide support in Chinese, English, French, German, Japanese and Spanish
- Extensive multi-media technical resources to help you
- We investigate all quality concerns to ensure our products perform to the highest standards

If the product does not perform as described on this datasheet, we will offer a refund or replacement. For full details of the Abpromise, please visit <http://www.abcam.com/abpromise> or contact our technical team.

Terms and conditions

- Guarantee only valid for products bought direct from Abcam or one of our authorized distributors