

## Product datasheet

# Anti-Attractin antibody ab129503

1 Image

### Overview

<b>Product name</b>	Anti-Attractin antibody
<b>Description</b>	Rabbit polyclonal to Attractin
<b>Tested applications</b>	<b>Suitable for:</b> WB
<b>Species reactivity</b>	<b>Reacts with:</b> Human
<b>Immunogen</b>	Synthetic peptide conjugated to KLH, corresponding to a region within C terminal amino acids 1391-1421 of Human Attractin (NP_647537.1, NP_647538.1).
<b>Positive control</b>	A549 cell line lysates.

### Properties

<b>Form</b>	Liquid
<b>Storage instructions</b>	Store at 4°C (up to 6 months). For long term storage store at -20°C
<b>Storage buffer</b>	Preservative: 0.09% Sodium azide Constituent: 99% PBS
<b>Purity</b>	Immunogen affinity purified
<b>Purification notes</b>	This antibody is purified through a protein A column, followed by peptide affinity purification.
<b>Clonality</b>	Polyclonal
<b>Isotype</b>	IgG

### Applications

Our [Abpromise guarantee](#) covers the use of **ab129503** in the following tested applications.

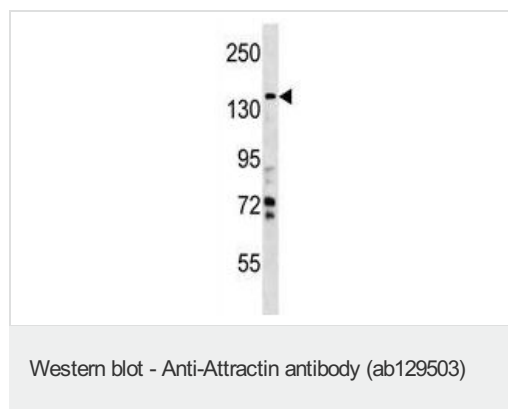
The application notes include recommended starting dilutions; optimal dilutions/concentrations should be determined by the end user.

Application	Abreviews	Notes
WB		1/100 - 1/500. Predicted molecular weight: 159 kDa.

### Target

<b>Function</b>	Involves in the initial immune cell clustering during inflammatory response and may regulate chemotactic activity of chemokines. May play a role in melanocortin signaling pathways that regulate energy homeostasis and hair color. Low-affinity receptor for agouti (By similarity). Has a critical role in normal myelination in the central nervous system.
<b>Tissue specificity</b>	Isoform 2 is detected in plasma (at protein level). Expressed and secreted by activated T lymphocytes. Expressed at low to moderate levels in peripheral blood leukocytes, spleen, lymph node, tonsil, bone marrow and fetal liver. At very low levels found in thymus. Isoform 2 is the major isoform in peripheral blood leukocytes.
<b>Sequence similarities</b>	Contains 1 C-type lectin domain. Contains 1 CUB domain. Contains 1 EGF-like domain. Contains 6 Kelch repeats. Contains 2 laminin EGF-like domains. Contains 4 PSI domains.
<b>Post-translational modifications</b>	Heavily glycosylated.
<b>Cellular localization</b>	Secreted and Cell membrane.

## Images



Anti-Attractin antibody (ab129503) at 1/100 dilution + A549 cell line lysates at 35 µg

**Predicted band size : 159 kDa**

**Please note:** All products are "FOR RESEARCH USE ONLY AND ARE NOT INTENDED FOR DIAGNOSTIC OR THERAPEUTIC USE"

## Our Abpromise to you: Quality guaranteed and expert technical support

- Replacement or refund for products not performing as stated on the datasheet
- Valid for 12 months from date of delivery
- Response to your inquiry within 24 hours
- We provide support in Chinese, English, French, German, Japanese and Spanish
- Extensive multi-media technical resources to help you
- We investigate all quality concerns to ensure our products perform to the highest standards

If the product does not perform as described on this datasheet, we will offer a refund or replacement. For full details of the Abpromise, please visit <http://www.abcam.com/abpromise> or contact our technical team.

## Terms and conditions

---

- Guarantee only valid for products bought direct from Abcam or one of our authorized distributors