

## Product datasheet

# Anti-RISC antibody ab13716

★★★★★ 1 Abreviews 1 References 2 Images

### Overview

<b>Product name</b>	Anti-RISC antibody
<b>Description</b>	Rabbit polyclonal to RISC
<b>Tested applications</b>	<b>Suitable for:</b> WB, ICC
<b>Species reactivity</b>	<b>Reacts with:</b> Mouse, Rat, Human
<b>Immunogen</b>	Synthetic peptide: VIDWPTEEGKEVWDYV, corresponding to amino acids 28-43 of Human RISC. <a href="#">Run BLAST with ExPASy</a> <a href="#">Run BLAST with NCBI</a>
<b>Positive control</b>	Tested with human heart cell lysate.

### Properties

<b>Form</b>	Liquid
<b>Storage instructions</b>	Shipped at 4°C. Store at +4°C short term (1-2 weeks). Upon delivery aliquot. Store at -20°C or -80°C. Avoid freeze / thaw cycle.
<b>Storage buffer</b>	Preservative: 0.02% Sodium Azide Constituents: PBS, 0.1mg/ml BSA
<b>Purity</b>	Protein G purified
<b>Clonality</b>	Polyclonal
<b>Isotype</b>	IgG

### Applications

Our [Abpromise guarantee](#) covers the use of **ab13716** in the following tested applications.

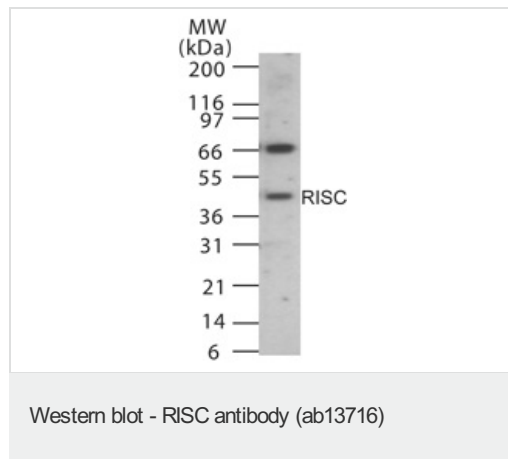
The application notes include recommended starting dilutions; optimal dilutions/concentrations should be determined by the end user.

Application	Abreviews	Notes
WB		1/500 - 1/1000. Detects a band of approximately 51 kDa.
ICC	★★★★★	1/20.

## Target

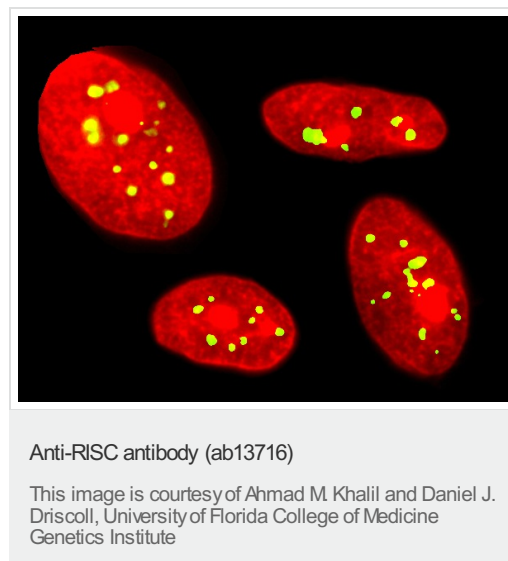
<b>Function</b>	May be involved in vascular wall and kidney homeostasis.
<b>Sequence similarities</b>	Belongs to the peptidase S10 family.
<b>Cellular localization</b>	Secreted.

## Images



Western blot analysis of human RISC in 15mgs of human heart cell lysate using ab13716 at 1/1000 dilution.

Western blot analysis of human RISC in 15mgs of human heart cell lysate using ab13716 at 1/1000 dilution.



Human female fibroblasts are immunostained with ab13716 (1/20) for RISC (FITC). Nuclear DNA is stained red with propidium iodide. RISC is found in several discrete regions within the nucleus.

Human female fibroblasts are immunostained with ab13716 (1/20) for RISC (FITC). Nuclear DNA is stained red with propidium iodide. RISC is found in several discrete regions within the nucleus.

**Please note:** All products are "FOR RESEARCH USE ONLY AND ARE NOT INTENDED FOR DIAGNOSTIC OR THERAPEUTIC USE"

## Our Abpromise to you: Quality guaranteed and expert technical support

- Replacement or refund for products not performing as stated on the datasheet
- Valid for 12 months from date of delivery
- Response to your inquiry within 24 hours
- We provide support in Chinese, English, French, German, Japanese and Spanish
- Extensive multi-media technical resources to help you
- We investigate all quality concerns to ensure our products perform to the highest standards

If the product does not perform as described on this datasheet, we will offer a refund or replacement. For full details of the Abpromise, please visit <http://www.abcam.com/abpromise> or contact our technical team.

## Terms and conditions

---

- Guarantee only valid for products bought direct from Abcam or one of our authorized distributors