

Product datasheet

Anti-SCP1 antibody ab15087

★★★★★ 2 Abreviews 19 References 2 Images

Overview

Product name	Anti-SCP1 antibody
Description	Rabbit polyclonal to SCP1
Tested applications	Suitable for: ICC/IF, IHC-P, ICC
Species reactivity	Reacts with: Mouse, Rat, Human, Pig, Common marmoset
Immunogen	Synthetic peptide (Human) (C terminal).

Properties

Form	Liquid
Storage instructions	Shipped at 4°C. Store at +4°C short term (1-2 weeks). Store at -20°C or -80°C. Avoid freeze / thaw cycle.
Storage buffer	Preservative: 0.1% Sodium Azide Constituents: Tris citrate/phosphate. pH 7-8
Purity	Immunogen affinity purified
Clonality	Polyclonal
Isotype	IgG

Applications

Our [Abpromise guarantee](#) covers the use of **ab15087** in the following tested applications.

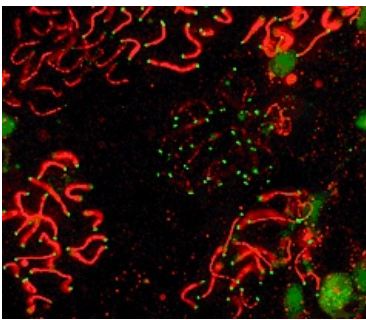
The application notes include recommended starting dilutions; optimal dilutions/concentrations should be determined by the end user.

Application	Abreviews	Notes
ICC/IF		1/300 - 1/750.
IHC-P	★★★★★	1/100.
ICC	★★★★☆	Use at an assay dependent concentration.

Target

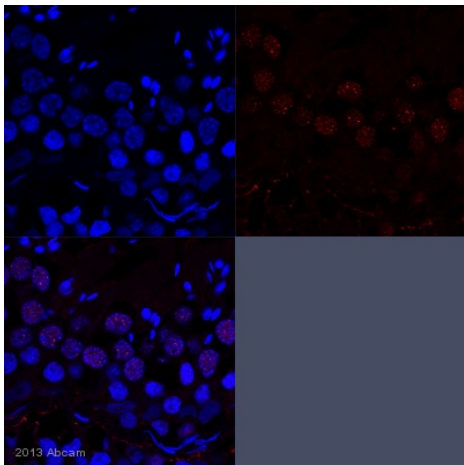
Function	Major component of the transverse filaments of synaptonemal complexes (SCS), formed between homologous chromosomes during meiotic prophase.
Tissue specificity	Testis.
Domain	Consists of an alpha-helical stretch of 700 AA residues, flanked by N- and C-terminal globular domains. The C-terminal domain has DNA-binding capacity.
Cellular localization	Nucleus. Chromosome. In tripartite segments of synaptonemal complexes, between lateral elements in the nucleus. Found only where the chromosome cores are synapsed. Its N-terminus is found towards the center of the synaptonemal complex while the C-terminus extends well into the lateral domain of the synaptonemal complex.

Images



SCP1 labeled in mouse pachytene preparation (red), using ab15087. CDK2 staining, near telomeres, is also present (green).

Immunocytochemistry/ Immunofluorescence - Anti-SCP1 antibody (ab15087)



IHC-P image of SCP1 staining with ab15087 on tissue sections from adult marmoset testis. The sections were subjected to heat-mediated antigen retrieval using Dako antigen retrieval solution. The sections were then blocked with 5% milk for 30 minutes at 25°C, before incubation with ab15087 (1/100 dilution) for 18 hours at 4°C. The secondary was an Alexa-Fluor 555 conjugated goat anti-rabbit polyclonal, used at a 1/500 dilution.

Immunohistochemistry (Formalin/PFA-fixed paraffin-embedded sections) - Anti-SCP1 antibody (ab15087)

This image is courtesy of an Abreview from Zachary Yu-Ching Lin.

Please note: All products are "FOR RESEARCH USE ONLY AND ARE NOT INTENDED FOR DIAGNOSTIC OR THERAPEUTIC USE"

Our Abpromise to you: Quality guaranteed and expert technical support

- Replacement or refund for products not performing as stated on the datasheet
- Valid for 12 months from date of delivery
- Response to your inquiry within 24 hours

- We provide support in Chinese, English, French, German, Japanese and Spanish
- Extensive multi-media technical resources to help you
- We investigate all quality concerns to ensure our products perform to the highest standards

If the product does not perform as described on this datasheet, we will offer a refund or replacement. For full details of the Abpromise, please visit <http://www.abcam.com/abpromise> or contact our technical team.

Terms and conditions

- Guarantee only valid for products bought direct from Abcam or one of our authorized distributors