

Product datasheet

Anti-VEGF Receptor 1 antibody, prediluted ab15294

★ ★ ★ ☆ ☆
[1 Abreviews](#)
[1 References](#)
[1 Image](#)

Overview

Product name	Anti-VEGF Receptor 1 antibody, prediluted
Description	Rabbit polyclonal to VEGF Receptor 1, prediluted
Tested applications	Suitable for: IHC-P
Species reactivity	Reacts with: Human Predicted to work with: Mouse, Rat
Immunogen	Synthetic peptide (unfortunately, the amino acid sequence is considered to be commercially sensitive) (Human) (C terminal).
Positive control	Hey cells. Angiosarcoma.

Properties

Form	Prediluted
Storage instructions	Shipped at 4°C. Store at +4°C.
Storage buffer	Preservative: 0.1% Sodium Azide Constituents: 1% BSA, 50mM Tris, pH 7.6
Purity	Immunogen affinity purified
Clonality	Polyclonal
Isotype	IgG

Applications

Our [Abpromise guarantee](#) covers the use of **ab15294** in the following tested applications.

The application notes include recommended starting dilutions; optimal dilutions/concentrations should be determined by the end user.

Application	Abreviews	Notes
IHC-P	★ ★ ★ ☆ ☆	

Application notes

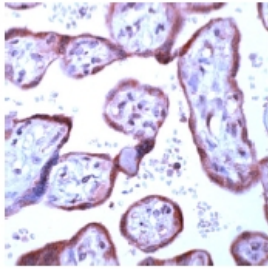
IHC-P: Use at an assay dependent dilution. Perform heat mediated antigen retrieval with 10mM citrate buffer, pH 6.0, before commencing with IHC staining protocol.

Not tested in other applications.

Optimal dilutions/concentrations should be determined by the end user.

Target	
Function	Receptor for VEGF, VEGFB and PGF. Has a tyrosine-protein kinase activity. The VEGF-kinase ligand/receptor signaling system plays a key role in vascular development and regulation of vascular permeability. Isoform sFlt1 may have an inhibitory role in angiogenesis.
Tissue specificity	Mostly in normal lung, but also in placenta, liver, kidney, heart and brain tissues. Specifically expressed in most of the vascular endothelial cells, and also expressed in peripheral blood monocytes. Isoform sFlt1 is strongly expressed in placenta.
Sequence similarities	Belongs to the protein kinase superfamily. Tyr protein kinase family. CSF-1/PDGF receptor subfamily. Contains 7 Ig-like C2-type (immunoglobulin-like) domains. Contains 1 protein kinase domain.
Cellular localization	Secreted and Cell membrane.

Images



ab15294 staining human placenta by Immunohistochemistry (FFPE-sections).

Immunohistochemistry (Formalin/PFA-fixed paraffin-embedded sections) - Anti-VEGF Receptor 1 antibody, prediluted (ab15294)

Please note: All products are "FOR RESEARCH USE ONLY AND ARE NOT INTENDED FOR DIAGNOSTIC OR THERAPEUTIC USE"

Our Abpromise to you: Quality guaranteed and expert technical support

- Replacement or refund for products not performing as stated on the datasheet
- Valid for 12 months from date of delivery
- Response to your inquiry within 24 hours
- We provide support in Chinese, English, French, German, Japanese and Spanish
- Extensive multi-media technical resources to help you
- We investigate all quality concerns to ensure our products perform to the highest standards

If the product does not perform as described on this datasheet, we will offer a refund or replacement. For full details of the Abpromise, please visit <http://www.abcam.com/abpromise> or contact our technical team.

Terms and conditions

- Guarantee only valid for products bought direct from Abcam or one of our authorized distributors