

Product datasheet

Anti-Osteocalcin antibody [5D1] ab22433

1 Image

Overview

Product name	Anti-Osteocalcin antibody [5D1]
Description	Mouse monoclonal [5D1] to Osteocalcin
Host species	Mouse
Specificity	ab22433 recognises specifically C terminal domain of osteocalcin.
Tested applications	Suitable for: ELISA
Species reactivity	Reacts with: Rat Does not react with: Human
Immunogen	Synthetic peptide (Rat) conjugated to BSA (C terminal).
Epitope	C terminal domain of Osteocalcin.

Properties

Form	Liquid
Storage instructions	Shipped at 4°C. Upon delivery aliquot and store at -20°C or -80°C. Avoid repeated freeze / thaw cycles.
Storage buffer	Preservative: 0.1% Sodium Azide Constituents: PBS, pH 7.4
Purity	Protein A purified
Clonality	Monoclonal
Clone number	5D1
Isotype	IgG1
Light chain type	kappa

Applications

Our [Abpromise guarantee](#) covers the use of **ab22433** in the following tested applications.

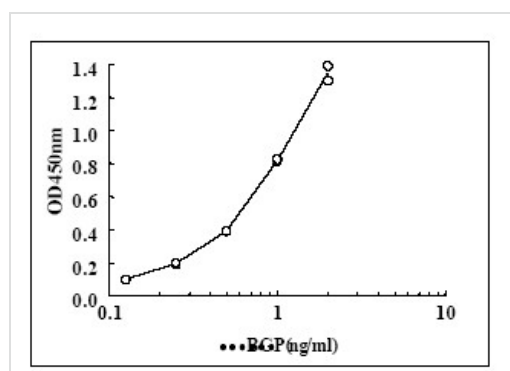
The application notes include recommended starting dilutions; optimal dilutions/concentrations should be determined by the end user.

Application	Abreviews	Notes
ELISA		Use a concentration of 10 µg/ml. (plate coating)

Target

Function	Constitutes 1-2% of the total bone protein. It binds strongly to apatite and calcium.
Sequence similarities	Belongs to the osteocalcin/matrix Gla protein family. Contains 1 Gla (gamma-carboxy-glutamate) domain.
Post-translational modifications	Gamma-carboxyglutamate residues are formed by vitamin K dependent carboxylation. These residues are essential for the binding of calcium.
Cellular localization	Secreted.

Images



Osteocalcin ELISA standard curve obtained using increasing concentrations of osteocalcin and 10 µg/ml ab22433 for coating the ELISA plates.

ELISA - Osteocalcin antibody [5D1] (ab22433)

Please note: All products are "FOR RESEARCH USE ONLY AND ARE NOT INTENDED FOR DIAGNOSTIC OR THERAPEUTIC USE"

Our Abpromise to you: Quality guaranteed and expert technical support

- Replacement or refund for products not performing as stated on the datasheet
- Valid for 12 months from date of delivery
- Response to your inquiry within 24 hours
- We provide support in Chinese, English, French, German, Japanese and Spanish
- Extensive multi-media technical resources to help you
- We investigate all quality concerns to ensure our products perform to the highest standards

If the product does not perform as described on this datasheet, we will offer a refund or replacement. For full details of the Abpromise, please visit <http://www.abcam.com/abpromise> or contact our technical team.

Terms and conditions

- Guarantee only valid for products bought direct from Abcam or one of our authorized distributors