

Product datasheet

Anti-DEK antibody ab22826

[1 References](#) [4 Images](#)

Overview

Product name	Anti-DEK antibody
Description	Rabbit polyclonal to DEK
Host species	Rabbit
Tested applications	Suitable for: WB, IHC-P, ELISA, ICC/IF
Species reactivity	Reacts with: Human Predicted to work with: Rat
Immunogen	A 14-22 amino acid region within synthetic peptide: APAAE GEGTP TQPASEKEPE MPGPREESEE EEDEDDEEEEE EEEKEKSLV EGKRE, corresponding to N terminal amino acids 5-59 of Human DEK Run BLAST with ExPASy Run BLAST with NCBI
Positive control	HepG2 cell lysate, hepatocytes and spleen cells.

Properties

Form	Liquid
Storage instructions	Shipped at 4°C. Upon delivery aliquot and store at -20°C or -80°C. Avoid repeated freeze / thaw cycles.
Storage buffer	Preservative: None Constituents: 2% Sucrose, PBS
Clonality	Polyclonal
Isotype	IgG

Applications

Our [Abpromise guarantee](#) covers the use of **ab22826** in the following tested applications.

The application notes include recommended starting dilutions; optimal dilutions/concentrations should be determined by the end user.

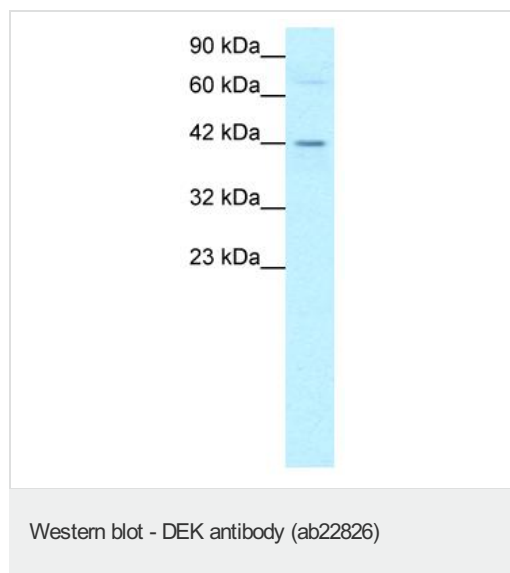
Application	Abreviews	Notes
WB		Use a concentration of 0.5 - 1 µg/ml. Predicted molecular weight: 42 kDa. Good results were obtained when blocked with 5% non-fat dry milk in 0.05% PBS-T.

Application	Abreviews	Notes
IHC-P		Use at an assay dependent concentration.
ELISA		1/62500.
ICC/IF		Use a concentration of 1 µg/ml.

Target

Function	Involved in chromatin organization.
Tissue specificity	Ubiquitous. Expressed at relatively high levels.
Involvement in disease	A chromosomal aberration involving DEK is found in a subset of acute myeloid leukemia (AML); also known as acute non-lymphocytic leukemia (PubMed:1549122). Translocation t(6;9) (p23;q34) with NUP214/CAN (PubMed:1549122). It results in the formation of a DEK-NUP214 fusion gene (PubMed:1549122).
Sequence similarities	Contains 1 SAP domain.
Post-translational modifications	Phosphorylated by CK2. Phosphorylation fluctuates during the cell cycle with a moderate peak during G(1) phase, and weakens the binding of DEK to DNA.
Cellular localization	Nucleus. Enriched in regions where chromatin is decondensed or sparse in the interphase nuclei.

Images



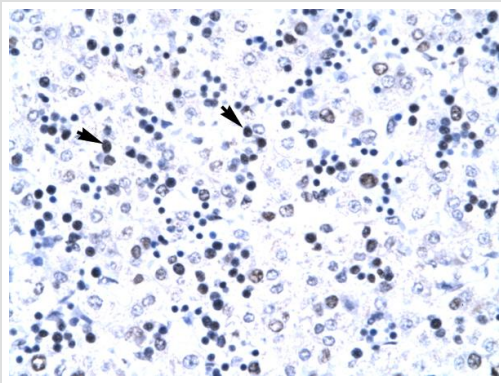
Anti-DEK antibody (ab22826) at 0.4 µg/ml +
HepG2 whole cell lysate (ab7900)

Secondary

Donkey Anti-Rabbit IgG H&L (HRP)
preadsorbed (ab7083)

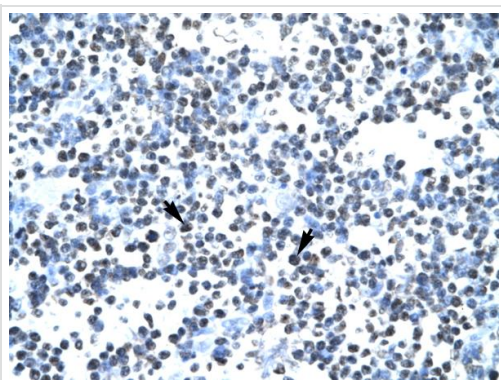
Predicted band size: 42 kDa

Observed band size: 42 kDa



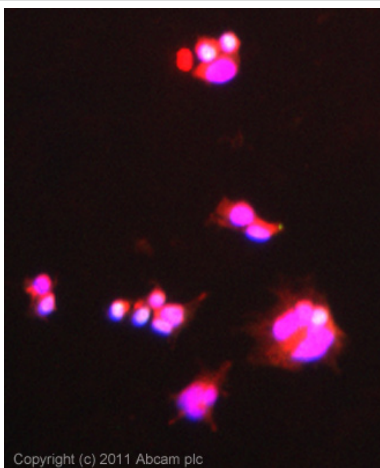
Immunohistochemistry (Paraffin-embedded sections)
- DEK antibody (ab22826)

ab22826 at 4.0 - 8.0 ug/ml, staining human DEK in paraffin embedded liver tissue. Arrows indicate positively labelled cells (hepatocytes).



Immunohistochemistry (Paraffin-embedded sections)
- DEK antibody (ab22826)

ab22826 at 4.0 - 8.0 ug/ml, staining human DEK in paraffin embedded thymus tissue. Arrows indicate positively labelled cells (spleen cells).



Immunocytochemistry/ Immunofluorescence-DEK antibody(ab22826)

ICC/IF image of ab22826 stained Hek293 cells. The cells were 100% methanol fixed (5 min) and then incubated in 1%BSA / 10% normal goat serum / 0.3M glycine in 0.1% PBS-Tween for 1h to permeabilise the cells and block non-specific protein-protein interactions. The cells were then incubated with the antibody (ab22826, 1 µg/ml) overnight at +4°C. The secondary antibody (green) was Alexa Fluor® 488 goat anti-rabbit IgG (H+L) used at a 1/1000 dilution for 1h. Alexa Fluor® 594 WGA was used to label plasma membranes (red) at a 1/200 dilution for 1h. DAPI was used to stain the cell nuclei (blue) at a concentration of 1.43µM.

Our Abpromise to you: Quality guaranteed and expert technical support

- Replacement or refund for products not performing as stated on the datasheet
- Valid for 12 months from date of delivery
- Response to your inquiry within 24 hours

- We provide support in Chinese, English, French, German, Japanese and Spanish
- Extensive multi-media technical resources to help you
- We investigate all quality concerns to ensure our products perform to the highest standards

If the product does not perform as described on this datasheet, we will offer a refund or replacement. For full details of the Abpromise, please visit <http://www.abcam.com/abpromise> or contact our technical team.

Terms and conditions

- Guarantee only valid for products bought direct from Abcam or one of our authorized distributors