

## Product datasheet

# Anti-Smac / Diablo antibody ab23450

[2 Images](#)

### Overview

<b>Product name</b>	Anti-Smac / Diablo antibody
<b>Description</b>	Rabbit polyclonal to Smac / Diablo
<b>Host species</b>	Rabbit
<b>Tested applications</b>	<b>Suitable for:</b> ELISA, WB, IHC-P
<b>Species reactivity</b>	<b>Reacts with:</b> Rabbit, Human <b>Predicted to work with:</b> Cow, Dog, Pig
<b>Immunogen</b>	A region within synthetic peptide: LQVEEVHQLS RKAETKLAEA QIEELRQKTQ EEGEERAESE QEAYLRED, corresponding to C terminal amino acids 139-186 of Human Smac/ Diablo <a href="#">Run BLAST with ExPASy</a> <a href="#">Run BLAST with NCBI</a>
<b>Positive control</b>	HepG2 cell lysate for WB. Paraffin embedded human kidney tissue for IHC.

### Properties

<b>Form</b>	Liquid
<b>Storage instructions</b>	Shipped at 4°C. Store at +4°C short term (1-2 weeks). Upon delivery aliquot. Store at -20°C or -80°C. Avoid freeze / thaw cycle.
<b>Storage buffer</b>	Preservative: None Constituents: 2% Sucrose, PBS
<b>Purity</b>	Immunogen affinity purified
<b>Purification notes</b>	The antibody was purified by affinity chromatography.
<b>Clonality</b>	Polyclonal
<b>Isotype</b>	IgG

### Applications

Our [Abpromise guarantee](#) covers the use of **ab23450** in the following tested applications.

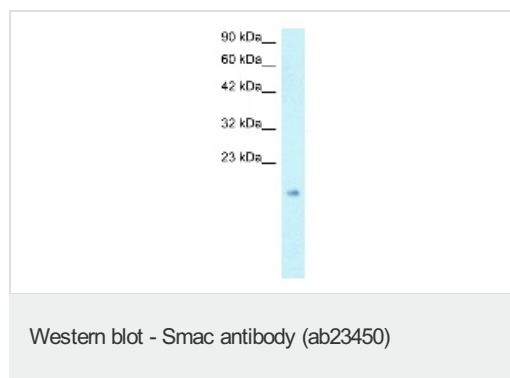
The application notes include recommended starting dilutions; optimal dilutions/concentrations should be determined by the end user.

Application	Abreviews	Notes
ELISA		1/15000.
WB		Use a concentration of 1 - 1.25 µg/ml. Predicted molecular weight: 27 kDa. Good results were obtained when blocked with 5% non-fat dry milk in 0.05% PBS-T.
IHC-P		Use a concentration of 4 - 8 µg/ml.

## Target

<b>Function</b>	Promotes apoptosis by activating caspases in the cytochrome c/Apaf-1/caspase-9 pathway. Acts by opposing the inhibitory activity of inhibitor of apoptosis proteins (IAP).
<b>Tissue specificity</b>	Ubiquitously expressed with highest expression in testis. Expression is also high in heart, liver, kidney, spleen, prostate and ovary. Low in brain, lung, thymus and peripheral blood leukocytes.
<b>Domain</b>	The mature N-terminus mediates interaction with XIAP.
<b>Cellular localization</b>	Mitochondrion. Released into the cytosol when cells undergo apoptosis.

## Images



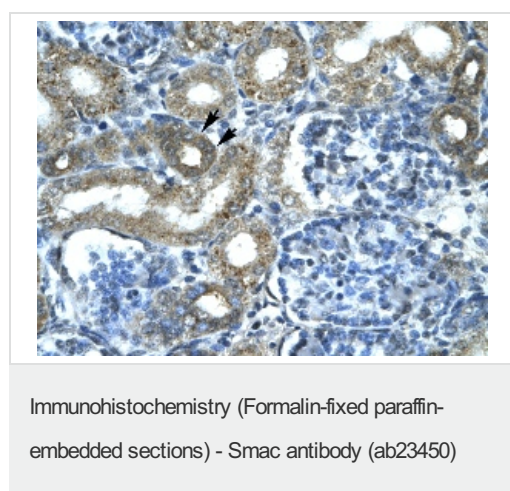
Anti-Smac / Diablo antibody (ab23450) at 1 µg/ml + HepG2 lysate

### Secondary

HRP conjugated anti-Rabbit IgG (1: 50,000-100,000)

**Predicted band size:** 27 kDa

**Observed band size:** 14 kDa



ab23450 at 4-8 µg/ml staining human Smac in kidney cells by immunohistochemistry (Paraffin embedded tissue). Epithelial cells of renal tubule (indicated with arrows).

Magnification 400x.

### **Our Abpromise to you: Quality guaranteed and expert technical support**

---

- Replacement or refund for products not performing as stated on the datasheet
- Valid for 12 months from date of delivery
- Response to your inquiry within 24 hours
  
- We provide support in Chinese, English, French, German, Japanese and Spanish
- Extensive multi-media technical resources to help you
- We investigate all quality concerns to ensure our products perform to the highest standards

If the product does not perform as described on this datasheet, we will offer a refund or replacement. For full details of the Abpromise, please visit <http://www.abcam.com/abpromise> or contact our technical team.

### **Terms and conditions**

---

- Guarantee only valid for products bought direct from Abcam or one of our authorized distributors