

## Product datasheet

# Anti-TAB1 antibody ab27983

★★★★☆ 2 Abreviews 1 Image

### Overview

<b>Product name</b>	Anti-TAB1 antibody
<b>Description</b>	Rabbit polyclonal to TAB1
<b>Tested applications</b>	<b>Suitable for:</b> WB
<b>Species reactivity</b>	<b>Reacts with:</b> Mouse, Rat, Human
<b>Immunogen</b>	Synthetic peptide mapping to the C terminus of Human TAB1.
<b>Positive control</b>	BaF3 cells.

### Properties

<b>Form</b>	Liquid
<b>Storage instructions</b>	Shipped at 4°C. Upon delivery aliquot and store at -20°C. Avoid freeze / thaw cycles.
<b>Storage buffer</b>	Preservative: 0.02% Thimerosal (merthiolate). Constituents: 50% Glycerol, 1% PBS, BSA.
<b>Purity</b>	Immunogen affinity purified
<b>Clonality</b>	Polyclonal
<b>Isotype</b>	IgG

### Applications

Our [Abpromise guarantee](#) covers the use of **ab27983** in the following tested applications.

The application notes include recommended starting dilutions; optimal dilutions/concentrations should be determined by the end user.

Application	Abreviews	Notes
WB	★★★★☆	Use a concentration of 1 - 4 µg/ml. Detects a band of approximately 60 kDa (predicted molecular weight: 55 kDa).

### Target

**Function** May be an important signaling intermediate between TGFB receptors and MAP3K7/TAK1. May

play an important role in mammalian embryogenesis.

**Tissue specificity**

Ubiquitous.

**Sequence similarities**

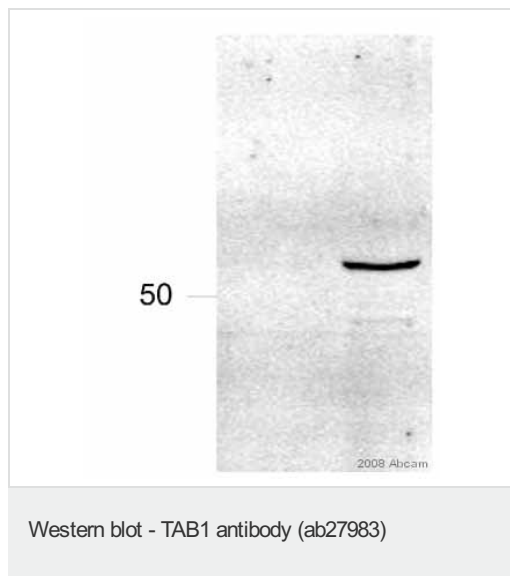
Contains 1 PP2C-like domain.

**Post-translational modifications**

Monoubiquitinated. Deubiquitinated by *Y. enterocolitica* YopP.

---

**Images**



**All lanes** : Anti-TAB1 antibody (ab27983) at 1/1000 dilution

**Lane 1** : CCL13 whole cell lysate, untransfected

**Lane 2** : CCL13 whole cell lysate, TAB1 transfected

Lysates/proteins at 30 µg per lane.

**Secondary**

Alexa Fluor® 680 conjugated goat anti-rabbit antibody

Developed using the ECL technique

Performed under reducing conditions.

**Predicted band size** : 55 kDa

**Observed band size** : 64 kDa

**Exposure time** : 2 minutes

*This image is courtesy of an Abreview submitted by Miss Nicola Bright*

---

**Please note:** All products are "FOR RESEARCH USE ONLY AND ARE NOT INTENDED FOR DIAGNOSTIC OR THERAPEUTIC USE"

---

**Our Promise to you: Quality guaranteed and expert technical support**

- Replacement or refund for products not performing as stated on the datasheet
- Valid for 12 months from date of delivery
- Response to your inquiry within 24 hours
- We provide support in Chinese, English, French, German, Japanese and Spanish
- Extensive multi-media technical resources to help you

- We investigate all quality concerns to ensure our products perform to the highest standards

If the product does not perform as described on this datasheet, we will offer a refund or replacement. For full details of the Abpromise, please visit <http://www.abcam.com/abpromise> or contact our technical team.

### **Terms and conditions**

---

- Guarantee only valid for products bought direct from Abcam or one of our authorized distributors