

Product datasheet

Anti-ZNF358 antibody ab28678

2 Images

Overview

<b>Product name</b>	Anti-ZNF358 antibody
<b>Description</b>	Rabbit polyclonal to ZNF358
<b>Host species</b>	Rabbit
<b>Tested applications</b>	<b>Suitable for:</b> WB, ELISA, IHC-P
<b>Species reactivity</b>	<b>Reacts with:</b> Human
<b>Immunogen</b>	A region within a synthetic peptide: NSDTLSPGDP KVDPISSGLT ATPQVLATSP AVLPPAPASPP RPFSCPDCGR, corresponding to N terminal amino acids 109-158 of Human ZNF358 <a href="#">Run BLAST with ExPASy</a> <a href="#">Run BLAST with NCBI</a>
<b>Positive control</b>	Jurkat Cell Lysate.

Properties

<b>Form</b>	Liquid
<b>Storage instructions</b>	Shipped at 4°C. Upon delivery aliquot and store at -20°C. Avoid freeze / thaw cycles.
<b>Storage buffer</b>	Preservative: None Constituents: 2% Sucrose, PBS.
<b>Purity</b>	Protein A purified
<b>Clonality</b>	Polyclonal
<b>Isotype</b>	IgG

Applications

Our [Abpromise guarantee](#) covers the use of **ab28678** in the following tested applications.

The application notes include recommended starting dilutions; optimal dilutions/concentrations should be determined by the end user.

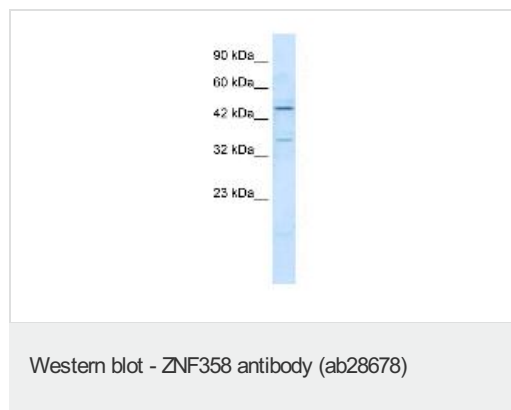
Application	Abreviews	Notes
WB		Use a concentration of 1.25 µg/ml. Predicted molecular weight: 50 kDa. Good results were obtained when blocked with 5% non-fat dry milk in 0.05% PBS-T.

Application	Abreviews	Notes
ELISA		1/312500.
IHC-P		Use at an assay dependent concentration.

## Target

<b>Function</b>	May be involved in transcriptional regulation.
<b>Sequence similarities</b>	Belongs to the krueppel C2H2-type zinc-finger protein family. Contains 9 C2H2-type zinc fingers.
<b>Cellular localization</b>	Nucleus.

## Images

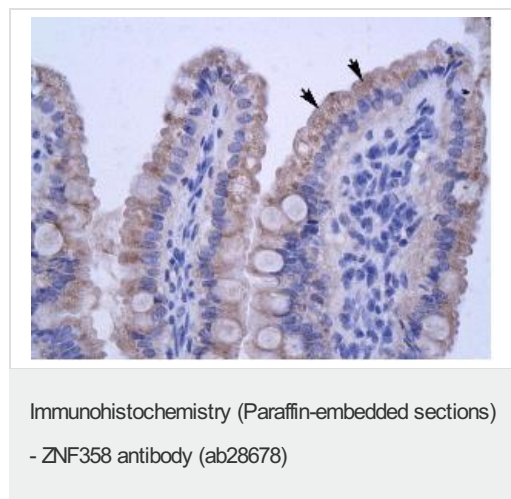


Anti-ZNF358 antibody (ab28678) at 1.25  $\mu\text{g/ml}$  + Jurkat Cell Lysate

### Secondary

Rabbit Anti ZNF358 Antibody at 1/50000 dilution

**Predicted band size:** 50 kDa



Ab28678, at concentration of 4.0-8.0  $\mu\text{g/ml}$ , staining ZNF358 in paraffin embedded human epithelial cells of intestinal villus by Immunohistochemistry. Arrows point to positively labelled cells. Magnification: 400x.

**Please note:** All products are "FOR RESEARCH USE ONLY AND ARE NOT INTENDED FOR DIAGNOSTIC OR THERAPEUTIC USE"

## Our Abpromise to you: Quality guaranteed and expert technical support

- Replacement or refund for products not performing as stated on the datasheet

- Valid for 12 months from date of delivery
- Response to your inquiry within 24 hours
  
- We provide support in Chinese, English, French, German, Japanese and Spanish
- Extensive multi-media technical resources to help you
- We investigate all quality concerns to ensure our products perform to the highest standards

If the product does not perform as described on this datasheet, we will offer a refund or replacement. For full details of the Abpromise, please visit <http://www.abcam.com/abpromise> or contact our technical team.

### **Terms and conditions**

---

- Guarantee only valid for products bought direct from Abcam or one of our authorized distributors