

Product datasheet

Anti-PDPK1 (phospho S241) antibody ab32800

3 References 2 Images

Overview

Product name	Anti-PDPK1 (phospho S241) antibody
Description	Rabbit polyclonal to PDPK1 (phospho S241)
Specificity	This antibody detects endogenous levels of PDPK1 only when phosphorylated at Serine 241.
Tested applications	Suitable for: WB, ELISA, IHC-P, IP
Species reactivity	Reacts with: Mouse, Rat, Human
Immunogen	Synthetic phosphopeptide (Human) derived from PDPK1 around the phosphorylation site of Serine 241.
Positive control	WB: extracts from MDA MB 435 cells and COS7 cells. IHC-P: breast carcinoma.

Properties

Form	Liquid
Storage instructions	Shipped at 4°C. Upon delivery aliquot and store at -20°C. Avoid freeze / thaw cycles.
Storage buffer	Preservative: 0.02% Sodium Azide. Constituents: 50% Glycerol, PBS (without calcium and magnesium ions), 150mM Sodium chloride, pH 7.4.
Purity	Immunogen affinity purified
Purification notes	This antibody was affinity purified from rabbit antiserum by affinity chromatography using epitope specific phosphopeptide. The antibody against non phosphopeptide was removed by chromatography using non phosphopeptide corresponding to the phosphorylation site.
Clonality	Polyclonal
Isotype	IgG

Applications

Our [Abpromise guarantee](#) covers the use of **ab32800** in the following tested applications.

The application notes include recommended starting dilutions; optimal dilutions/concentrations should be determined by the end user.

Application	Abreviews	Notes
WB		1/500 - 1/1000. Detects a band of approximately 65 kDa (predicted molecular weight: 63 kDa).
ELISA		1/20000.

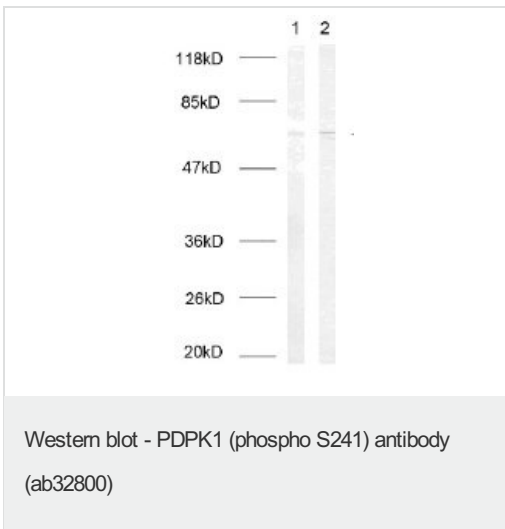
IHC-P Use at an assay dependent concentration.

IP Use at an assay dependent concentration.

Target

Function	Phosphorylates and activates not only PKB/AKT, but also PKA, PKC-zeta, RPS6KA1 and RPS6KB1. May play a general role in signaling processes and in development (By similarity). Isoform 3 is catalytically inactive.
Tissue specificity	Appears to be expressed ubiquitously.
Sequence similarities	Belongs to the protein kinase superfamily. AGC Ser/Thr protein kinase family. PDK1 subfamily. Contains 1 PH domain. Contains 1 protein kinase domain.
Post-translational modifications	Phosphorylated on tyrosine and serine/threonine. Phosphorylation on Ser-241 in the activation loop is required for full activity. PDK1 itself can autophosphorylate Ser-241, leading to its own activation.
Cellular localization	Cytoplasm. Membrane. Membrane-associated after cell stimulation leading to its translocation. Tyrosine phosphorylation seems to occur only at the plasma membrane.

Anti-PDPK1 (phospho S241) antibody images



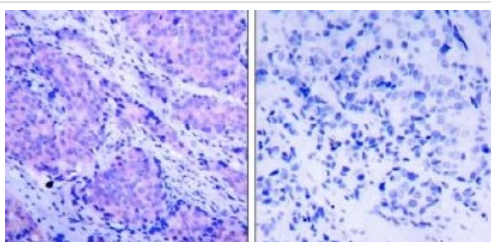
All lanes : Anti-PDPK1 (phospho S241) antibody (ab32800) at 1/1000 dilution

Lane 1 : MDA MB 435 cell extract treated with EGF.

Lane 2 : COS7 cell extract treated with TNF.

Predicted band size : 63 kDa

Observed band size : 65 kDa



Immunohistochemistry (Paraffin-embedded sections)
- PDPK1 (phospho S241) antibody (ab32800)

Ab32800, at a 1/50 dilution, staining PDPK1 in paraffin embedded breast carcinoma tissue by Immunohistochemistry.
Left image: untreated.
Right image: treated with synthesized phosphopeptide.

Our Abpromise to you: Quality guaranteed and expert technical support

- Replacement or refund for products not performing as stated on the datasheet
- Valid for 12 months from date of delivery
- Response to your inquiry within 24 hours

- We provide support in Chinese, English, French, German, Japanese and Spanish
- Extensive multi-media technical resources to help you
- We investigate all quality concerns to ensure our products perform to the highest standards

If the product does not perform as described on this datasheet, we will offer a refund or replacement. For full details of the Abpromise, please visit <http://www.abcam.com/abpromise> or contact our technical team.

Terms and conditions

- Guarantee only valid for products bought direct from Abcam or one of our authorized distributors