

Product datasheet

Anti-PSMC3 antibody ab3321

1 Image

Overview

<b>Product name</b>	Anti-PSMC3 antibody
<b>Description</b>	Rabbit polyclonal to PSMC3
<b>Host species</b>	Rabbit
<b>Specificity</b>	Detects proteasome 19S subunit S6'.
<b>Tested applications</b>	<b>Suitable for:</b> WB, IP
<b>Species reactivity</b>	<b>Reacts with:</b> Human
<b>Immunogen</b>	Recombinant full length protein corresponding to Human Proteasome 19S S6'. Human recombinant proteasome 19S subunit S6'. Database link: <a href="#">P17980</a>
<b>Positive control</b>	HeLa cell lysate.

Properties

<b>Form</b>	Liquid
<b>Storage instructions</b>	Shipped at 4°C. Store at +4°C short term (1-2 weeks). Upon delivery aliquot. Store at -20°C or -80°C. Avoid freeze / thaw cycle.
<b>Storage buffer</b>	Constituents: 0.1% BSA, 99% PBS
<b>Purity</b>	IgG fraction
<b>Clonality</b>	Polyclonal
<b>Isotype</b>	IgG

Applications

Our [Abpromise guarantee](#) covers the use of **ab3321** in the following tested applications.

The application notes include recommended starting dilutions; optimal dilutions/concentrations should be determined by the end user.

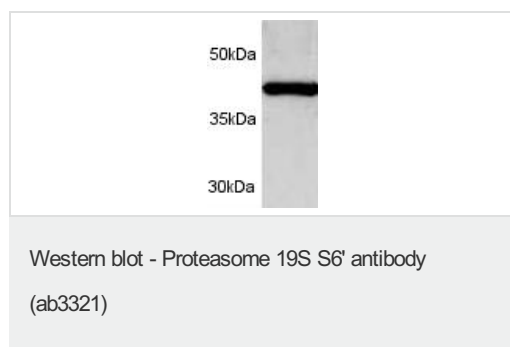
Application	Abreviews	Notes
WB		1/1000. Detects a band of approximately 48 kDa. By Western blot, this antibody detects a 48 kDa protein representing proteasome 19S subunit S6' from HeLa cell lysate.

Application	Abreviews	Notes
IP		Use at an assay dependent concentration.

## Target

<b>Function</b>	The 26S protease is involved in the ATP-dependent degradation of ubiquitinated proteins. The regulatory (or ATPase) complex confers ATP dependency and substrate specificity to the 26S complex (By similarity). In case of HIV-1 infection, suppresses Tat-mediated transactivation.
<b>Sequence similarities</b>	Belongs to the AAA ATPase family.
<b>Post-translational modifications</b>	Sumoylated by UBE2I in response to MEKK1-mediated stimuli.
<b>Cellular localization</b>	Cytoplasm. Nucleus.

## Images



Western blot on partially purified human 19S proteasome using ab3321.

**Please note:** All products are "FOR RESEARCH USE ONLY AND ARE NOT INTENDED FOR DIAGNOSTIC OR THERAPEUTIC USE"

## Our Abpromise to you: Quality guaranteed and expert technical support

- Replacement or refund for products not performing as stated on the datasheet
- Valid for 12 months from date of delivery
- Response to your inquiry within 24 hours
- We provide support in Chinese, English, French, German, Japanese and Spanish
- Extensive multi-media technical resources to help you
- We investigate all quality concerns to ensure our products perform to the highest standards

If the product does not perform as described on this datasheet, we will offer a refund or replacement. For full details of the Abpromise, please visit <http://www.abcam.com/abpromise> or contact our technical team.

## Terms and conditions

- Guarantee only valid for products bought direct from Abcam or one of our authorized distributors