

## Product datasheet

# Anti-Mesothelin antibody [K1] ab3362

★ ★ ★ ☆ ☆
[1 Abreviews](#)
[7 References](#)
[1 Image](#)

### Overview

<b>Product name</b>	Anti-Mesothelin antibody [K1]
<b>Description</b>	Mouse monoclonal [K1] to Mesothelin
<b>Host species</b>	Mouse
<b>Tested applications</b>	<b>Suitable for:</b> WB, IHC-Fr, Flow Cyt, IHC-P
<b>Species reactivity</b>	<b>Reacts with:</b> Human, Cynomolgus monkey
<b>Immunogen</b>	Spleen lymphocytes from mice fused with OVCAR-3, an ovarian tumor cell line derived from poorly differentiated adenocarcinoma of the ovary.
<b>Positive control</b>	Tonsil, lymph node and OVCAR-3 cells (human).
<b>General notes</b>	This product is sold as crude ascites fluid so we estimate the IgG concentration ~1-3mg/ml.

### Properties

<b>Form</b>	Liquid
<b>Storage instructions</b>	Shipped at 4°C. Store at +4°C short term (1-2 weeks). Store at -20°C or -80°C. Avoid freeze / thaw cycle.
<b>Storage buffer</b>	Constituent: 1% BSA
<b>Purity</b>	Ascites
<b>Clonality</b>	Monoclonal
<b>Clone number</b>	K1
<b>Isotype</b>	IgG1

### Applications

Our [Abpromise guarantee](#) covers the use of **ab3362** in the following tested applications.

The application notes include recommended starting dilutions; optimal dilutions/concentrations should be determined by the end user.

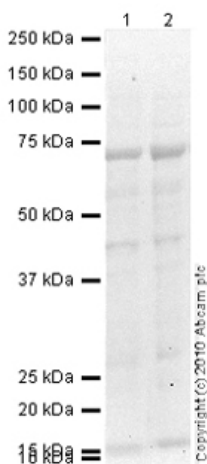
Application	Abreviews	Notes
WB	<span>★ ★ ★ ☆ ☆</span>	Use at an assay dependent concentration. Detects a band of approximately 73 kDa (predicted molecular weight: 69 kDa). PubMed: 18490724

Application	Abreviews	Notes
IHC-Fr		Use at an assay dependent concentration. Acetone fixation was used.
Flow Cyt		Use at an assay dependent concentration. PubMed: 18490724 <a href="#">ab170190</a> - Mouse monoclonal IgG1, is suitable for use as an isotype control with this antibody.
IHC-P		Use at an assay dependent concentration. Antigen retrieval is not essential but may optimise staining. One hour primary antibody incubation was used.

## Target

<b>Function</b>	Membrane-anchored forms may play a role in cellular adhesion. Megakaryocyte-potentiating factor (MPF) potentiates megakaryocyte colony formation in vitro.
<b>Tissue specificity</b>	Expressed in lung. Expressed at low levels in heart, placenta and kidney. Expressed in mesothelial cells. Highly expressed in mesotheliomas, ovarian cancers, and some squamous cell carcinomas (at protein level).
<b>Involvement in disease</b>	Note=Antibodies against MSLN are detected in patients with mesothelioma and ovarian cancer.
<b>Sequence similarities</b>	Belongs to the mesothelin family.
<b>Post-translational modifications</b>	Both MPF and the cleaved form of mesothelin are N-glycosylated. Proteolytically cleaved by a furin-like convertase to generate megakaryocyte-potentiating factor (MPF), and the cleaved form of mesothelin.
<b>Cellular localization</b>	Secreted and Cell membrane. Golgi apparatus.

## Images



Western blot - Mesothelin antibody [K1] (ab3362)

**All lanes :** Anti-Mesothelin antibody [K1]

(ab3362) at 1 µg/ml

**Lane 1 :** Lung (Human) Tissue Lysate

**Lane 2 :** Human placenta tissue lysate - total protein (ab29745)

Lysates/proteins at 10 µg per lane.

### Secondary

**All lanes :** Goat Anti-Mouse IgG H&L (HRP) preadsorbed (ab97040) at 1/5000 dilution

Developed using the ECL technique.

Performed under reducing conditions.

**Predicted band size:** 69 kDa

**Observed band size:** 73 kDa

**Additional bands at:** 15 kDa, 44 kDa. We are unsure as to the identity of these extra bands.

**Exposure time:** 20 minutes

Mesothelin contains a number of potential glycosylation sites (SwissProt) which may explain its migration at a higher molecular weight than predicted.

**Please note:** All products are "FOR RESEARCH USE ONLY AND ARE NOT INTENDED FOR DIAGNOSTIC OR THERAPEUTIC USE"

### Our Abpromise to you: Quality guaranteed and expert technical support

- Replacement or refund for products not performing as stated on the datasheet
- Valid for 12 months from date of delivery
- Response to your inquiry within 24 hours
- We provide support in Chinese, English, French, German, Japanese and Spanish
- Extensive multi-media technical resources to help you
- We investigate all quality concerns to ensure our products perform to the highest standards

If the product does not perform as described on this datasheet, we will offer a refund or replacement. For full details of the Abpromise,

please visit <http://www.abcam.com/abpromise> or contact our technical team.

## **Terms and conditions**

---

- Guarantee only valid for products bought direct from Abcam or one of our authorized distributors