

Product datasheet

Anti-Creatine Kinase MM antibody ab38178

1 Image

Overview

| | |
|----------------------------|---|
| Product name | Anti-Creatine Kinase MM antibody |
| Description | Rabbit polyclonal to Creatine Kinase MM |
| Host species | Rabbit |
| Tested applications | Suitable for: ELISA, WB |
| Species reactivity | Reacts with: Human |
| Immunogen | Synthetic peptide from within amino acids 250-350 of human creatine kinase MM conjugated to KLH |
| Positive control | C6 cell lysate |

Properties

| | |
|-----------------------------|--|
| Form | Liquid |
| Storage instructions | Shipped at 4°C. Store at +4°C short term (1-2 weeks). Upon delivery aliquot. Store at -20°C long term. |
| Storage buffer | Preservative: 0.09% Sodium Azide Constituents: PBS |
| Purity | Protein G purified |
| Clonality | Polyclonal |
| Isotype | IgG |

Applications

Our [Abpromise guarantee](#) covers the use of **ab38178** in the following tested applications.

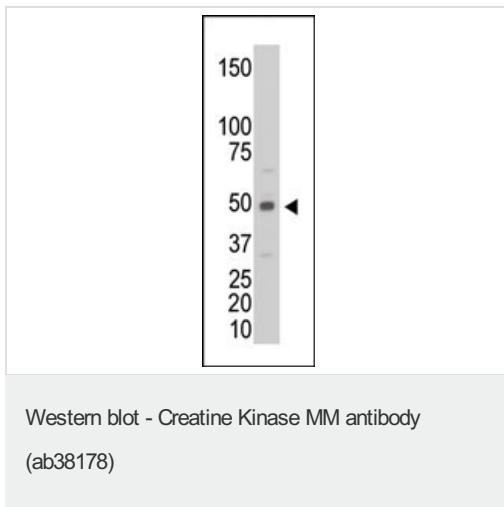
The application notes include recommended starting dilutions; optimal dilutions/concentrations should be determined by the end user.

| Application | Abreviews | Notes |
|-------------|-----------|---|
| ELISA | | 1/1000. |
| WB | | 1/100 - 1/500. Detects a band of approximately 47 kDa (predicted molecular weight: 43 kDa). |

Target

| | |
|------------------------------|---|
| Function | Reversibly catalyzes the transfer of phosphate between ATP and various phosphogens (e.g. creatine phosphate). Creatine kinase isoenzymes play a central role in energy transduction in tissues with large, fluctuating energy demands, such as skeletal muscle, heart, brain and spermatozoa. |
| Sequence similarities | Belongs to the ATP:guanido phosphotransferase family. Contains 1 phosphagen kinase C-terminal domain. Contains 1 phosphagen kinase N-terminal domain. |
| Cellular localization | Cytoplasm. |

Images



Anti-Creatine Kinase MM antibody (ab38178)
at 1/100 dilution + C6 cell lysate

Predicted band size: 43 kDa

Please note: All products are "FOR RESEARCH USE ONLY AND ARE NOT INTENDED FOR DIAGNOSTIC OR THERAPEUTIC USE"

Our Abpromise to you: Quality guaranteed and expert technical support

- Replacement or refund for products not performing as stated on the datasheet
- Valid for 12 months from date of delivery
- Response to your inquiry within 24 hours
- We provide support in Chinese, English, French, German, Japanese and Spanish
- Extensive multi-media technical resources to help you
- We investigate all quality concerns to ensure our products perform to the highest standards

If the product does not perform as described on this datasheet, we will offer a refund or replacement. For full details of the Abpromise, please visit <http://www.abcam.com/abpromise> or contact our technical team.

Terms and conditions

- Guarantee only valid for products bought direct from Abcam or one of our authorized distributors